

# ACCESS

## A WORLD OF THEATRE



Living With Dementia

A CHAT WITH  
FRANK & ALISON  
LITTLEFORD



A Theatre For Everyone

PUTTING  
COMMUNITY AT THE  
HEART OF THEATRE



Memory Café

HELPING PEOPLE  
TO LIVE WELL WITH  
DEMENTIA



# Welcome

**W**elcome back to another exciting addition of *Access a World of Theatre*.

In this large print, condensed version of our fabulous Spotlight Magazine, we highlight upcoming accessible performances and events that are taking place at the Grand Theatre and within the community. This brochure will guide you through the facilities and services at the Grand, providing useful information on booking your tickets and to help you during your visit.

Here at the Grand, we believe that the magic of live theatre

should be accessible for everyone. That's why our dedicated Outreach team work hard to schedule accessible performances regularly throughout the year including BSL Interpreted, Audio Described, Captioned and Relaxed.

We are excited to expand our access performance offering further for shows such as **THE WIZARD OF OZ, AN OFFICER AND A GENTLEMAN, COME FROM AWAY** and a Relaxed Performance of **MADAGASCAR** all



'Here at the Grand, we believe that the magic of live theatre should be accessible for everyone.'

in 2024.

Our community work continues to develop in the next 12 months to include our annual Pantomime Project collaborating with community groups to create a piece of art themed around this year's pantomime, **SNOW WHITE; HAF School Holiday** creative workshops and a BSL Integrated schools tour of **MY GNOME ON THE ROAM** in amongst other exciting educational and community events.

Finally, the theatre continues to enrich the lives of people

affected by dementia through the musical Memory Cafés and Care Home Tours, making sure the magic of live entertainment reaches as many people as possible. In June this year, we celebrated 4 years of Memory Cafés with an event at The Mount Hotel, joined by 100 attendees and representatives from our sponsors. It was a wonderful chance to thank everyone for their support and enjoy a few hours of singing and dancing!

However you choose to engage with us here at the Grand, we would like to thank you for supporting us and we hope to welcome you back very soon!

**Remy Lloyd -  
Head of Outreach**

**WE WOULD ALSO  
LIKE TO TAKE THIS  
OPPORTUNITY TO  
THANK OUR SPONSORS:**





# INTRO TO ACCESS PERFORMANCES

Here at the Wolverhampton Grand Theatre we have a range of accessible shows for our patrons which include Audio Described, British Sign Language Interpreted, Captioned and Relaxed Performances.

## CONTENTS

<b>02</b>	Welcome from Remy & the Outreach Team	<b>19</b>	Bonnie & Clyde
<b>05</b>	An Introduction to Access Performances	<b>20</b>	Awful Auntie
<b>06</b>	An Introduction to Access Services	<b>21</b>	Life Of Pi
<b>08</b>	Annie	<b>22</b>	Putting Community at the Heart of Theatre
<b>09</b>	Matthew Bourne's Romeo & Juliet	<b>24</b>	Madagascar The Musical
<b>10</b>	Peter Pan Goes Wrong	<b>25</b>	The Mousetrap
<b>11</b>	Jesus Christ Superstar	<b>26</b>	Unfortunate
<b>12</b>	A Chat with Frank & Alison Littleford	<b>27</b>	The Wizard Of Oz
<b>14</b>	Snow White	<b>28</b>	Dementia Friendly Theatre
<b>15</b>	Everybody's Talking About Jamie	<b>30</b>	An Officer And A Gentleman
<b>16</b>	The Rocky Horror Show	<b>31</b>	Also Booking
<b>17</b>	2:22 A Ghost Story	<b>32</b>	Relaxed Performances
<b>18</b>	Six		

### AUDIO DESCRIBED PERFORMANCES & TOUCH TOURS



We offer Audio Description and touch tours for a variety of performances throughout the year, ideal for customers with a visual impairment. Audio Description takes place live, describing the action on stage during the gaps in speech. This is transmitted through one of our headsets or the Mobile Connect app on a smart device. A preshow touch tour usually takes place an hour before these performance, allowing patrons to interact with scenery, props and costume.

### CAPTIONED PERFORMANCES



Our Captioned Performances display dialogue, sound effects and lyrics onto text units that are located on either side of the stage. These performances are most suitable for patrons who are deaf or hard of hearing and do not use British Sign Language, though captioning can be beneficial to everyone.

### BRITISH SIGN LANGUAGE (BSL) INTERPRETED PERFORMANCES



BSL Interpreted Performances can be accessed by customers that are deaf or hard of hearing and communicate using British Sign Language. The BSL interpreter is positioned at either side of the stage and interprets the vocal line of the performance. Seats with the best view of the interpreter can be accessed online for customers on the access register or by contacting the Box Office or Outreach team.

### RELAXED PERFORMANCES



A Relaxed Performance is perfect for anyone that finds the usual performance setting overwhelming. We make changes to the performance, auditorium, and front of house areas to remove the stress and create a relaxed environment. Quiet spaces, a sensory room and a changing place is available during these performances.

Members of our access register scheme can book seats with the best view of the BSL interpreter or captioning units for accessible performances. These seats are indicated using a star symbol.

# INTRO TO ACCESS SERVICES

We have a range of accessible services available to make sure everyone's visit is relaxed and enjoyable.

## ASSISTANCE DOGS

We welcome assistance dogs into the theatre and can allocate a suitable position for you and your dog. Alternatively, we can arrange for a verified volunteer to take care of your dog during the performance - please let us know if you wish to use this service when booking your tickets.

## GROUPS, SCHOOLS, & CARE HOME BOOKINGS

Groups, schools and care homes that have access requirements can book via a member of the Outreach team by emailing [access@grandtheatre.co.uk](mailto:access@grandtheatre.co.uk) or calling 01902 57 33 20.

## ORIENTATION

Orientation sessions can be arranged to help familiarise customers with the theatre. The sessions can be useful to assess the environment before a performance, see where they will be sitting and meet members of staff. Please note that these are not theatre tours.

## ASSISTIVE HEARING EQUIPMENT

We operate two hearing systems, both provided by Sennheiser. One is a radio frequency system that works with our in-house headsets and necklace loops. The other is Mobile Connect, a system that uses wi-fi to transmit to your own smart device. When booking an Audio Described Performance, let us know if you would like a headset and we can allocate one to you.

## ACCESS REGISTER

Our Access Register membership scheme is for patrons with disabilities and additional access requirements, providing concessions for the patron and their partner/companion. The membership scheme is free to join and application forms can be downloaded from our website, sent to you by calling the Box Office or emailing [access@grandtheatre.co.uk](mailto:access@grandtheatre.co.uk)

## SENSORY BAGS

If you or someone you know is feeling uncomfortable and overwhelmed during a performance, sensory bags are available to borrow from the Box Office or by asking a member of staff. The packs include ear defenders and a variety of sensory toys.

## STAFF ASSISTANCE

If you have a visual impairment and would like some assistance getting around the building throughout your visit, a member of staff will be more than happy to help. Please contact [access@grandtheatre.co.uk](mailto:access@grandtheatre.co.uk) to arrange this with the team.

If you have any specific requirements, please contact us ahead of your visit and someone will be happy to help. For more information contact the team by emailing [access@grandtheatre.co.uk](mailto:access@grandtheatre.co.uk) or visit our website.



## Annie



**Tue 10 - Sat 14 Oct '23**

Evenings at 7.30pm  
Wed, Thu & Sat matinee at 2.30pm

**Tickets from £15\***



**BSL Interpreted,**  
Thu 12 Oct 7.30pm



**Audio Described  
Performance & Touch Tour:**  
Sat 14 Oct 2.30pm

The smash-hit production of **ANNIE** is coming to Wolverhampton direct from London's West End. This 'glorious revival' (*The Times*) stars *Strictly Come Dancing* judge **Craig Revel Horwood** (Tue - Fri performances) and **Jodie Prenger** (Saturday performances) as the tyrannical Miss Hannigan!

Set in 1930s New York during The Great Depression, brave young Annie is forced to live a life of misery at Miss Hannigan's orphanage. Her luck soon changes when she's chosen to spend a fairytale Christmas with famous billionaire, Oliver Warbucks. Meanwhile, spiteful Miss Hannigan has other ideas and hatches a plan to spoil Annie's search for her true family...

With its Tony® award-winning book and score, including the unforgettable songs *It's The Hard-Knock Life*, *Easy Street*, *I Don't Need Anything But You* and *Tomorrow*, you can bet your bottom dollar that you'll love it!

**The appearance of any member of cast is subject to change and may be affected by contracts, holiday, illness, or events beyond the producers' control.**

## Matthew Bourne's Romeo And Juliet



**Tue 17 - Sat 21 Oct '23**

Evenings at 7.30pm  
Thu & Sat matinee at 2.30pm

**Tickets from £19.50\***



**Audio Described  
Performance & Touch Tour:**  
Sat 21 Oct 2.30pm

**Matthew Bourne's ROMEO AND JULIET** gives Shakespeare's timeless story of forbidden love a scintillating injection of raw passion and youthful vitality. Confined against their will by a society that seeks to divide, our two young lovers must follow their hearts as they risk everything to be together. A masterful re-telling of an ageless tale of teenage discovery and the madness of first love, **ROMEO AND JULIET** garnered universal critical acclaim when it premiered in 2019, and now returns to the New Adventures repertoire alongside the very best of Bourne's world renowned dance theatre productions.

Directed and choreographed by **Matthew Bourne**, collaborating with the *New Adventures* Artistic team; **Etta Murfitt** (Associate Artistic Director), **Lez Brotherston** (Set and Costume design), **Paule Constable** (Lighting Design), **Paul Groothuis** (Sound Design) and **Arielle Smith** (Associate Choreographer) with **Terry Davies'** thrillingly fresh orchestrations of Prokofiev's dynamic score.

**IN CONVERSATION WITH MATTHEW BOURNE:** Follows the evening performance on Tuesday 17 October. **Matthew Bourne** will be joined on stage by **Jessica Ward**, Trustee of *New Adventures* and Principle of *Elmhurst Ballet School*, for a live interview about **ROMEO AND JULIET** and more. If you have booked a ticket for this performance, you are invited to join us for this free event which is expected to last 30-45 minutes. **Age Guidance: 14+**



## Peter Pan Goes Wrong



**Mon 30 Oct -  
Sat 4 Nov '23**

Evenings at 7.30pm  
Wed & Sat matinee at 2.30pm

**Tickets from £15.50\***



**BSL Interpreted  
Performance:**

Thu 2 Nov at 7.30pm



**Captioned  
Performance:**

Thu 2 Nov at 7.30pm



**Audio Described  
Performance &  
Touch Tour:**

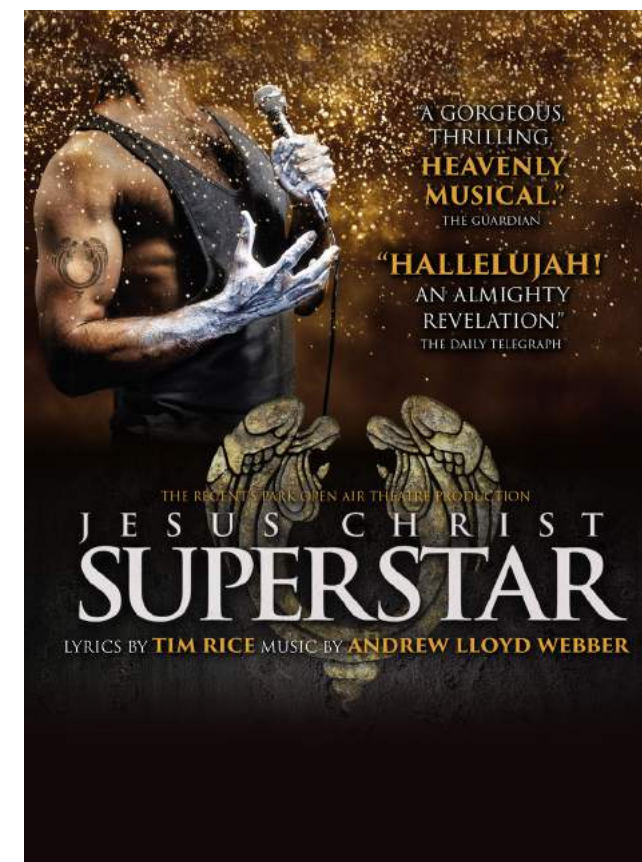
Sat 4 Nov 2.30pm

Following their multi award-winning sell-out success with *The Play That Goes Wrong* and the BBC TV series *The Goes Wrong Show*, **Mischief** return with their riotous spin on a timeless classic, the West End smash hit **PETER PAN GOES WRONG**.

The members of the Cornley Drama Society are back on stage, battling technical hitches, flying mishaps and cast disputes as they attempt to present J.M Barrie's much-loved tale. But will they ever make it to Neverland?

Mischief's unique brand of hilarious, 'gut-busting' comedy (*New York Times*), has found universal appeal. Catch them in Wolverhampton and brace yourselves for an awfully big adventure!

## Jesus Christ Superstar



**Tue 14 - Sat 18 Nov '23**

Evenings at 7.30pm  
Wed & Sat matinee at 2.30pm

**Tickets from £20\***



**BSL Interpreted  
Performance:**

Thu 16 Nov 7.30pm



**Audio Described  
Performance &  
Touch Tour:**

Sat 18 Nov 2.30pm

An album that inspired **a revolution. A revelation** that changed the world. **A reinvention** for this millennium.

**Timothy Sheader** (*Crazy for You, Into the Woods*) directs this mesmerizing new production of the iconic global phenomenon, **JESUS CHRIST SUPERSTAR** which comes to Wolverhampton for 1 week only! Originally staged by London's Regent's Park Open Air Theatre, this reimagined production won the 2017 Olivier Award for Best Musical Revival, garnering unprecedented reviews and accolades.

Choreographed by **Drew McOnie** (*King Kong, Strictly Ballroom*), with music and lyrics by **Andrew Lloyd Webber** and **Tim Rice**, **JESUS CHRIST SUPERSTAR** is set against the backdrop of an extraordinary series of events during the final weeks in the life of Jesus Christ, as seen through the eyes of Judas. Reflecting the rock roots that defined a generation, the legendary score includes *I Don't Know How to Love Him*, *Gethsemane* and *Superstar*.

Don't miss your chance to see this "gorgeous, thrilling, heavenly musical." – The Guardian.

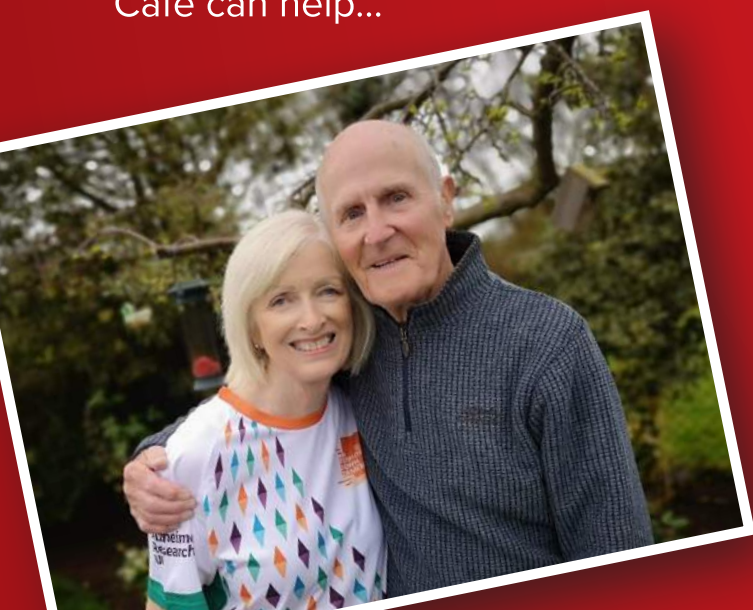


# Access

## A WORLD OF THEATRE

WITH FRANK & ALISON LITTLEFORD

According to the Alzheimer's Society there are currently around 900,000 people in the UK living with dementia and this figure is set to rise to 1.6 million people by 2040. As a result, the need for social and community-based support is rapidly increasing and with this in mind, our Memory Cafés began in 2019. The cafés' were designed in conversation with people affected by dementia that wanted to keep music and theatre in their lives in a safe and supportive environment. We had the privilege of speaking with Frank and Alison Littleford about their experiences of dementia and how attending groups such as the Memory Café can help...



### OUR DEMENTIA EXPERIENCE

It can be difficult to get a diagnosis and early diagnosis is crucial to ensure that help is given as quickly as possible. Dementia changes things – we are constantly having to adapt to an altered way of life as Frank's illness progresses. We are immensely grateful to family and friends for their love and support. We are both very keen to raise awareness of the illness and raise funds for research. Effective treatments are on the horizon - in the future families will hopefully be spared the heartache of losing someone they love to dementia.

### LIVING WELL WITH DEMENTIA

The Grand Theatre Memory Café is a lifeline for people living with dementia, their carers and loved ones. Each session provides an opportunity to spend a very pleasant couple of hours with others in a similar situation, enjoying music and lovely company. If other local organisations like Wolverhampton

Grand think creatively about how they could also support people living with dementia, they can improve the quality of life for local residents, reduce the stress and isolation that carers might be experiencing and improve the mental health of their service users.

We have both always loved The Grand Theatre – we are lucky to have an amazing community resource in the centre of Wolverhampton. My first visit was to the pantomime when I was only 3 years old and I've been a lover of theatre ever since! Our favourite thing is the opportunities it provides to experience a wide range of shows – there is something for everyone. However, the other thing that makes us love Wolverhampton Grand Theatre is the amazing, friendly, helpful staff who make us feel welcome, valued and cared for – they are a credit to the theatre. We both love theatre, films, dance and live music and although Frank is likely to forget these events after he has attended, he definitely enjoys

them 'in the moment.' Frank is a keen Wolves supporter and we also attend The Wolves Molineux Memories each week which is a group for people experiencing memory problems.

### WORDS OF WISDOM

Don't be afraid to ask for and accept help. Ask questions, seek answers. Find out what is available locally that might be of help to you. Give groups like the Wolverhampton Grand Theatre Memory Café a go – you'll meet some kind people who will help you realise that you're not alone. Remember that dementia is a physical illness of the brain and nothing to be embarrassed about. Try to maintain a sense of humour – although I know that isn't always easy to do. Most of all, be kind to yourself.

For more information about our accessible services, please contact the Outreach Team by calling **01902 57 33 20** or email **[access@grandtheatre.co.uk](mailto:access@grandtheatre.co.uk)**



**DID YOU KNOW...**  
PEOPLE LIVING WITH DEMENTIA CAN GET A FREE CARER TICKET WITH OUR ACCESS REGISTER SCHEME?



## Snow White



**Sat 2 Dec '23 -  
Sun 7 Jan '24**  
**Tickets from £16.50\***



**BSL Interpreted:**  
Thu 14 Dec 2.30pm & 7pm



**Audio Described  
Performance & Touch Tour:**  
Thu 14 Dec 2.30pm



**Relaxed Performance:**  
Fri 15 Dec 11am &  
Sat 16 Dec 11am



**Captioned Performance:**  
Wed 20 Dec 7pm



**Audio Described  
Performance &  
BSL Interpreted:**  
Sat 6 Jan 1pm



Mirror, mirror, on the wall, don't miss the fairest pantomime of them all... we promise it will be a truly WICKED adventure!

The ultimate festive family spectacular stars **Kelle Bryan** (*Eternal, Hollyoaks, Loose Women*) as the Good Fairy Elementa, with **Gyasi Sheppy** (*CBeebies*) as our dashing Prince and **Niki Colwell Evans** (*X Factor, Blood Brothers, Kinky Boots*) returns, but this time...she's WICKED! They join **Evie Pickerill** (*CBeebies*) as Snow White, **Tam Ryan** as Muddles & **Ian Adams** as Nanny Nolly.

Join us as we look in the mirror, defeat the Evil Queen and follow Snow White & the prince on their journey to find true love's kiss in this ultimate fairy-tale family adventure.

Take a bite of panto delight with spectacular scenery and costumes, magical special effects, wicked humour and plenty of audience participation! **SNOW WHITE** promises to be a festive spectacular for all ages.

## Everybody's Talking About Jamie



**Tue 23 - Sat 27 Jan '24**  
Evenings at 7.30pm  
Wed & Sat matinee at 2.30pm  
**Tickets from £15.50\***



**BSL Interpreted  
Performance:**  
Thu 25 Jan 7.30pm



**Audio Described  
Performance &  
Touch Tour:**  
Sat 27 Jan 2.30pm

WINNER! Best New Musical. Whats On Stage Awards, London

Following a record-breaking three-year West End residency, sold-out UK & Ireland Tour and Amazon studios award-winning film, the smash-hit and critically acclaimed musical **EVERYBODY'S TALKING ABOUT JAMIE** returns to Wolverhampton Grand Theatre.

Jamie New is sixteen and lives on a council estate in Sheffield. Jamie doesn't quite fit in. Jamie is terrified about the future. Jamie is going to be a sensation. Supported by his brilliant loving mum and surrounded by his friends, Jamie overcomes prejudice, beats the bullies and steps out of the darkness, into the spotlight. This 'Funny, outrageous, touching' (*Daily Telegraph*), musical sensation is to be experienced by all the family and not to be missed!

With an original score of catchy pop tunes that will 'blow the roof off the Theatre' (*Mail on Sunday*) by lead singer-songwriter of *The Feeling*, **Dan Gillespie Sells** and writer **Tom MacRae** (*Doctor Who*), this 'Sparkling coming-of-age musical' (*The Times*) will have everybody talking about Jamie for years to come.

Sixteen: the edge of possibility. Time to make your dreams come true.



## The Rocky Horror Show



**Tue 6 - Sat 10 Feb '24**

Tuesday & Wednesday 8pm,  
Thursday - Saturday 5.30pm  
& 8.30pm

**Tickets from £16\***



**BSL Interpreted  
Performance:**  
Sat 10 Feb 5.30pm



**Audio Described  
Performance &  
Touch Tour:**  
Sat 10 Feb 5.30pm

Ready to thrill you with fun and naughty moments, **Richard O'Brien's** legendary rock 'n' roll musical, **THE ROCKY HORROR SHOW** comes to Wolverhampton Grand as part of its sell-out tour, having been seen by over 30 million theatregoers.

**THE ROCKY HORROR SHOW** is the story of two squeaky clean college kids – Brad and his fiancée Janet. When by a twist of fate, their car breaks down outside a creepy mansion whilst on their way to visit their former college professor, they meet the charismatic Dr Frank'n'Furter. It is an adventure they'll never forget, filled with fun, frolics, frocks, and frivolity.

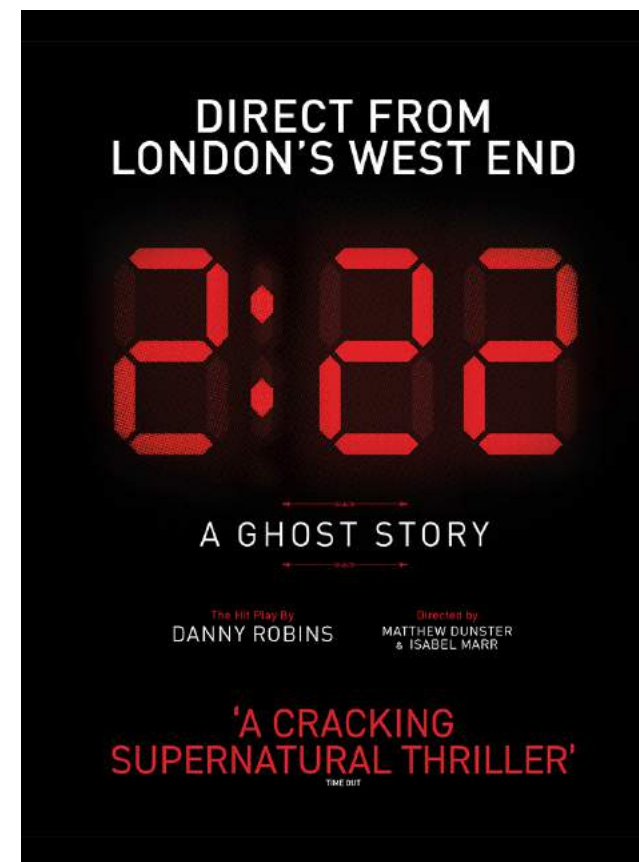
Directed by **Christopher Luscombe**, **THE ROCKY HORROR SHOW** is the biggest party and features timeless classics, including *Sweet Transvestite*, *Damn it Janet*, and of course, the pelvic thrusting show stopping *Time Warp*.

★★★★★ (*The Telegraph*)

**'Fierce and fabulous fun!'** (*Daily Express*)

**'Still the sexiest & funniest show in town'** (*Evening Standard*)

## 2:22 A Ghost Story



**Tue 20 -  
Sat 24 Feb '24**

Evenings at 7.30pm  
Wed & Sat matinee at 2.30pm

**Tickets from £15\***



**BSL Interpreted  
Performance:**  
Thu 22 Feb 7.30pm



**Captioned Performance:**  
Thu 22 Feb 7.30pm



**Audio Described  
Performance &  
Touch Tour:**  
Sat 24 Feb 2.30pm

The new stage phenomenon that has taken the West End by storm now comes to Wolverhampton!

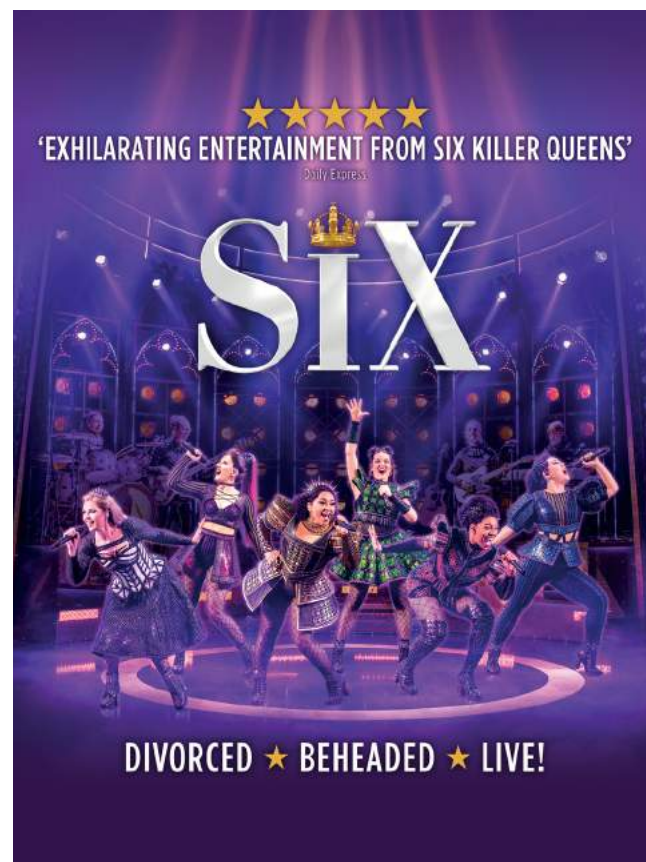
Winner of BEST NEW PLAY at the WhatsOnStage Awards, this edge-of-your-seat, supernatural thriller is written by **Danny Robins**, creator of the hit BBC podcasts *Uncanny* & *The Battersea Poltergeist*, and comes fresh from record-breaking seasons at four West End theatres with a host of acclaimed star performances (including among others Lily Allen, Cheryl, Stephanie Beatriz, Tom Felton, Jake Wood and James Buckley). It's a brilliantly funny and adrenaline-filled night where secrets emerge and ghosts may or may not appear... What do you believe? And do you dare discover the truth?

**"THERE'S SOMETHING IN OUR HOUSE. I HEAR IT EVERY NIGHT,  
AT THE SAME TIME"**

Jenny believes her new home is haunted, but her husband Sam isn't having any of it. They argue with their first dinner guests, old friend Lauren and new partner Ben. Can the dead really walk again? Belief and scepticism clash, but something feels strange and frightening, and that something is getting closer, so they're going to stay up... until 2:22... and then they'll know. **Age Guidance: 12+**



## SIX



**Tue 27 Feb -  
Sun 3 Mar '24**

Tuesday - Thursday at 8pm  
Friday at 6pm & 8.30pm  
Saturday at 4pm & 8pm  
Sunday at 2pm

**Tickets from £19\***



**BSL Interpreted  
Performance:**  
Sat 2 Mar 4pm



**Audio Described  
Performance &  
Touch Tour:**  
Sat 2 Mar 4pm

The crowning glory of Broadway, the West End and beyond, the international smash hit musical **SIX** makes its royal return to Wolverhampton, following its previous sell-out success!

Winner of the Tony Award for 'Best Original Score' and 'Best Costume Design', double winner of the WhatsOnStage Award for 'Best West End Show' and a Gold-Disk winning album, this sell-out Tudor take-off has 'an incredibly strong and powerful message' (*The Australian*) and is 'pure entertainment' (*New York Times*).

From Tudor Queens to Pop Princesses, the six wives of Henry VIII take to the mic to tell their tales, remixing five hundred years of historical heartbreak into an 80-minute celebration of 21st century girl power. These Queens may have green sleeves but their lipstick is rebellious red.

Think you know the rhyme, think again...

Divorced. Beheaded. LIVE!

## Bonnie & Clyde



**Tue 5 -  
Sat 9 Mar '24**

Evenings at 7.30pm,  
Wednesday & Saturday  
matinees at 2.30pm

**Tickets from £16\***



**BSL Interpreted  
Performance:**  
Thu 7 Mar 7.30pm



**Audio Described  
Performance &  
Touch Tour:**  
Sat 9 Mar 2.30pm

Winner of Best New Musical (WhatsOnStage Awards 2023), the West End smash-hit **BONNIE & CLYDE** is set to hold-up Wolverhampton following two hell-raising seasons in London's West End.

Two small-town kids from the middle of nowhere became the biggest folk heroes in all America. They craved adventure - and each other. Their names were Bonnie and Clyde. Fearless, shameless, and alluring, this award-winning production has garnered a mass following, much like the infamous pair themselves, and now they are set to take your city by storm.

Discover the electrifying story of love, adventure and crime that captured the attention of an entire nation.

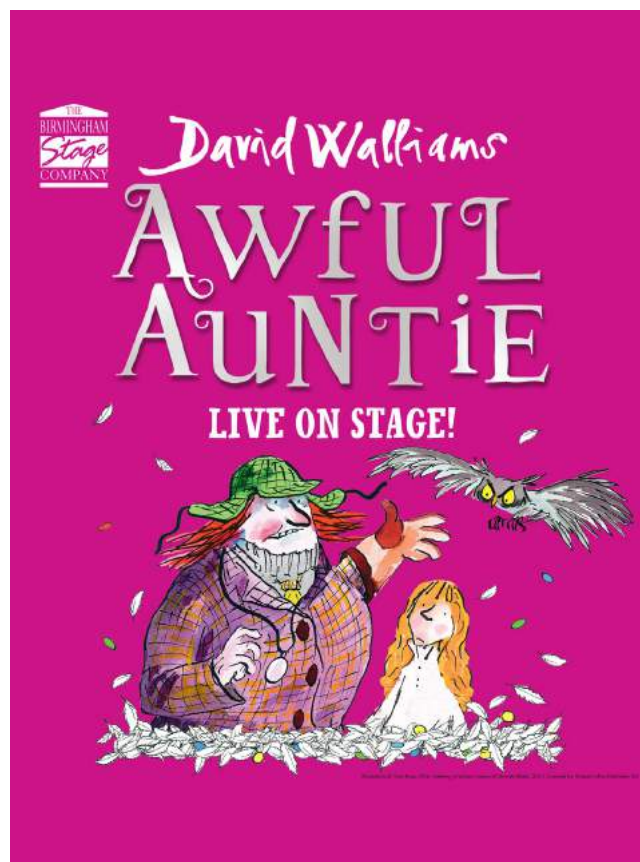
Featuring music by Tony® nominee **Frank Wildhorn** (*Jekyll & Hyde*), lyrics by Tony® and Oscar® winner **Don Black** (*Sunset Boulevard*), a book by Emmy® Award nominee **Ivan Menchell**, and directed by **Nick Winston**.

Book now – it would be a crime to miss it!

**Age Guidance: 12+**



## Awful Auntie



**Thu 28 -  
Sun 31 Mar '24**  
Thursday - Saturday  
at 2.30pm & 6.30pm,  
Sunday at 11am  
**Tickets from £12\***

**CAP** Captioned Performance:  
Fri 29 Mar 6.30pm

When Stella sets off to visit London with her parents, she has no idea her life is in danger! When Stella wakes up three months later, only her Aunt Alberta can tell her what has happened. But not everything Alberta tells her turns out to be true and Stella quickly discovers she's in for the fight of her life against her very own awful Auntie!

Following their acclaimed productions of *Gangsta Granny*, *Billionaire Boy* and *Demon Dentist*, Birmingham Stage Company are proud to present a fabulous new production of David Walliams' amazing adventure story, featuring a very large owl, a very small ghost and a very awful Auntie!

"The Birmingham Stage Company's adaptations of my books are always brilliant, so I can't wait for the fun to begin again! It's going to be a hoot!"  
David Walliams

## Life Of Pi



**Mon 22 -  
Sat 27 Apr '24**  
Evenings at 7.30pm  
Wednesday & Saturday  
matinee at 2.30pm  
**Tickets from £19.50\***

**CAP** Captioned Performance:  
Sat 27 Apr 2.30pm

**AD** Audio Described  
Performance &  
Touch Tour:  
Sat 27 Apr 2.30pm

Based on the best-selling book by **Yann Martel**, the five-star hit show comes to Wolverhampton.

Winner of five Olivier Awards, including Best New Play! After conquering the West End and Broadway, the five-star 'theatrical phenomenon' (*Telegraph*) embarks on its biggest adventure yet.

Jaw-dropping visuals and world-class puppetry combine in a unique and 'breath-taking' (*The Times*) theatrical event that is 'a wonder to behold' (*Daily Mail*).

After an epic storm in the Pacific Ocean, Pi is stranded on a lifeboat with four other survivors – a hyena, a zebra, an orangutan, and a Royal Bengal tiger.

Based on the global phenomenon and winner of the Man Booker Prize, selling over fifteen million copies worldwide, **LIFE OF PI** is the hugely popular story of an epic journey of endurance and hope. Don't miss the West End and Broadway spectacle on its first ever UK tour.

"It will make you believe in theatre. A triumph." (*Sunday Times*)

**Age Guidance: 16+**



# PUTTING Community

AT THE HEART OF THEATRE



## THEATRE TOURS

Ever wondered what goes on behind the scenes? Have you ever wished you could tread the boards of the Grand Theatre stage? With our guided theatre tours, you can! Spend up to two hours learning about the history of the theatre and hearing stories from members of staff whilst they show you behind the scenes of our magical venue. Public theatre tours are organised regularly throughout the year and spaces can be booked online.

**Access Information:** Theatre tours are accessible for wheelchair users and customers with limited mobility. Please let us know if you require a BSL interpreter, hearing loop or anything else to make your visit more enjoyable.

## MEMORY CAFÉ TOUR

Every year we hit the road to bring **FREE** performances to care and residential homes around the West Midlands. These performances ensure we reach people who may not be able to attend the theatre with live, professional entertainment. Residents can enjoy an hour of nostalgic music whilst singing and dancing along in comfort.



## INTRO TO PANTO

For many, pantomime is the spark that lights a lifelong love of theatre. That's why our Intro to Panto roadshow visits schools throughout Wolverhampton, the Black Country and beyond to bring the magic of live theatre to their school hall. To date we have performed to over 50,000 children with a 30 minute interactive workshop and a 40 minute production of the forthcoming Grand Theatre pantomime.



## STAGES WORKSHOPS

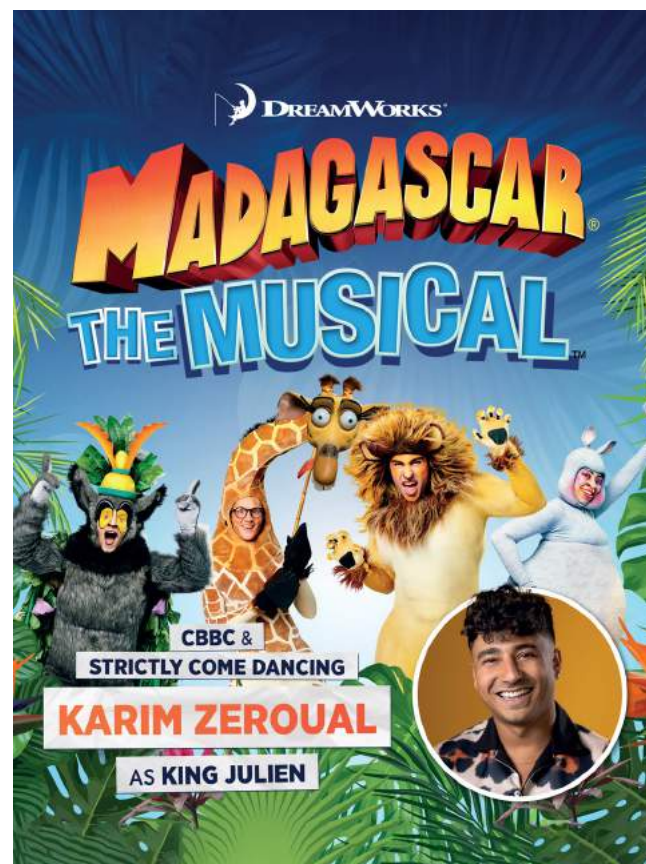
Our school holiday programme **STAGES** offers a variety of creative workshops and activities for young people. Previous activities include drama, hip-hop and Bhangra dance workshops, custom clothing activities, graffiti art and much more. For selected school holidays, our workshops are free to attend for young people with a HAF number and include a healthy meal and snacks.



For more information  
or to enquire please email  
[outreach@grandtheatre.co.uk](mailto:outreach@grandtheatre.co.uk)



## Madagascar The Musical



**Thu 30 May -  
Sun 2 Jun '24**

Thursday - Sunday 5pm,  
Saturday & Sunday 11am

**Tickets from £17.50\***



**Relaxed Performance:**

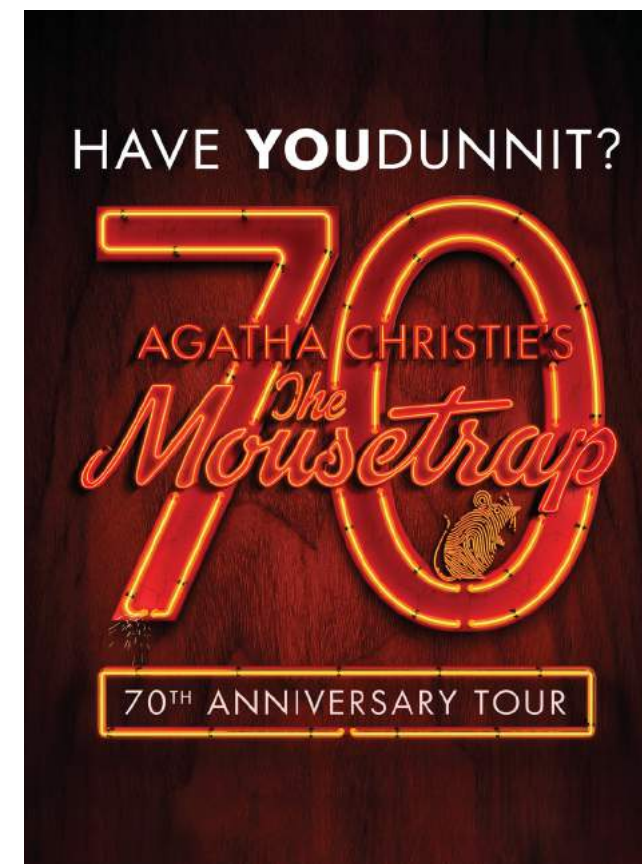
Sun 2 Jun 11am

Join all of your favourite crack-a-lackin' friends as they escape from their home in New York's Central Park Zoo and find themselves on an unexpected journey to the madcap world of King Julien's **MADAGASCAR**.

Alex the lion is the king of the urban jungle, the main attraction at New York's Central Park Zoo. He and his best friends – Marty the zebra, Melman the giraffe and Gloria the hippo – have spent their whole lives in blissful captivity before an admiring public and with regular meals provided for them. Not content to leave well enough alone, Marty lets his curiosity get the better of him and makes his escape – with the help of some prodigious penguins – to explore the world.

Starring *CBBC* and *Strictly Come Dancing* Star, **Karim Zeroual** as King Julien get ready to join Alex, Marty, Melman, Gloria and those hilarious, plotting penguins as they bound onto stage in the musical adventure of a lifetime. Filled with outlandish characters, adventure galore and an upbeat score, you'll have no choice but to *Move It, Move It!*

## The Mousetrap



**Tue 25 -  
Sat 29 Jun '24**

Evenings at 7.30pm,  
Wednesday & Saturday  
matinee at 2.30pm

**Tickets from £14.75\***



**Captioned Performance:**

Sat 29 Jun 2.30pm

Agatha Christie's **THE MOUSETRAP** is the world's longest-running play. This thrilling West End production is the genre-defining murder mystery from the best-selling novelist of all time... case closed!

As news spreads of a murder in London, a group of seven strangers find themselves snowed in at a remote countryside guesthouse. When a police sergeant arrives, the guests discover – to their horror – that a killer is in their midst! Which one is the murderer? Who will be their next victim? Can you solve this world-famous mystery for yourself?

Now celebrating 70 years, Agatha Christie's **THE MOUSETRAP** has kept millions of people from every corner of the globe on the edge of their seats. Could you be next?



## Unfortunate



**Thu 11 -  
Sun 14 Jul '24**

Thursday & Friday at 7.30pm,  
Saturday at 2.30pm & 7.30pm,  
Sunday at 1pm & 5pm

**Tickets from £16\***



**BSL Interpreted  
Performance:**  
Sat 13 Jul 2.30pm



**Audio Described  
Performance &  
Touch Tour:**  
Sat 13 Jul 2.30pm

### Disney villain. Octo-woman. Plus-size icon.

Fresh from complete sell out runs at the Edinburgh Fringe and around the UK comes this critically acclaimed smash hit parody musical.

**UNFORTUNATE** is coming to Wolverhampton and things are gonna get wet.

Join everyone's favourite Disney Diva, Ursula, as she gives her take on what *really* happened all those years ago under the sea. With an original hot pop soundtrack and trademark filthy humour, it's time to take the plunge and dive into this year's hottest night out.

Cruella told her side, and Maleficent's had her moment. Now the legendary queer queen is ready to spill, in this tell-all tale of sex, sorcery and suckers.

**Age Guidance: 16+ Contains strong language, partial nudity, scenes of a sexual nature and flashing lights.**

## The Wizard Of Oz



**Tue 30 Jul -  
Sun 4 Aug '24**

Evenings at 7.30pm,  
Wednesday & Saturday  
matinees at 2.30pm

**Tickets from £15\***



**BSL Interpreted  
Performance:**  
Thu 1 Aug 7.30pm



**Audio Described  
Performance &  
Touch Tour:**  
Sat 3 Aug 2.30pm

Direct from The London Palladium, the sensational new production of one of the world's most beloved musicals comes to Wolverhampton.

Featuring the iconic original score from the Oscar-winning MGM film including *Over The Rainbow*, *Follow The Yellow Brick Road* and *We're Off To See The Wizard* with additional songs from Andrew Lloyd Webber and Tim Rice, this spectacular production of **THE WIZARD OF OZ** will be a truly magical experience for all the family.

Join Dorothy, Toto, and friends on an unforgettable adventure down the yellow brick road to the merry old land of Oz.

There's no place like Wolverhampton this July.



# Dementia- friendly

## THEATRE

Since 2019, Wolverhampton Grand Theatre has been working hard to enrich the lives of our customers living with dementia and their loved ones. We believe that live theatre should be accessible to all, and our dementia-friendly theatrical Memory Cafés and events provide a safe and supportive space to make this possible.

We host three Memory Cafés throughout each month and reach up to 60 people per café. They are free to attend and include an hour

of live entertainment, refreshments, and the chance to meet people in a similar situation.

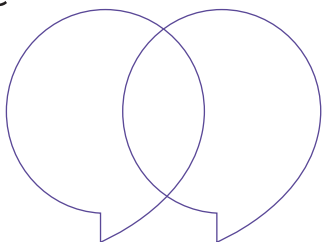
To benefit as many people as possible, we added a Memory Café tailored to the Black, African & Caribbean communities and these include Motown, Reggae, Gospel & Soul music.

Everyone is welcome to attend any of our cafés, but we will continue to diversify their content to ensure we cater to as many people as possible.



## UPCOMING EVENTS:

- **Sophie Clayton & Carl McGregor:** “Remy and the team are so welcoming; my husband enjoys two hours of music and friendship and at no cost to us. The theatre is working hard to make positive difference to people. Wolverhampton has deprived areas with no provision for people with dementia - this group has a hugely positive impact on the local community.”  
Friday 6 October,  
Friday 3 November &  
Friday 8 December
- **Ian Adams & Julie Paton:**  
Thursday 26 &  
Friday 27 October  
Thursday 21 &  
Friday 22 December
- **Darcie Edwards:**  
Thursday 16 &  
Friday 17 November



Our Memory Cafés and Care Home tours wouldn't be possible without the generosity of our patrons & sponsors:





## An Officer And A Gentleman



**Mon 23 -  
Sat 28 Sep '24**

Evenings at 7.30pm  
Wednesday and Saturday  
matinee at 2.30pm

**Tickets from £16\***



**BSL Interpreted  
Performance:**  
Thu 26 at 7.30pm



**Audio Described  
Performance &  
Touch Tour:**  
Sat 28 at 2.30pm

Prepare to be swept off your feet with **AN OFFICER AND A GENTLEMAN THE MUSICAL** based on the award-winning 80s movie. This timeless story of love, courage, and redemption will make your heart soar and leave you breathless, longing for more.

Set to a smash-hit soundtrack featuring the songs of *Madonna*, *Bon Jovi*, *Cyndi Lauper*, *Blondie* and many more, the power of music will carry you through the highs and lows of their extraordinary love story, including the award-winning (*Love Lift Us*) *Up Where We Belong*.

**AN OFFICER AND A GENTLEMAN THE MUSICAL** invites you into a world where dreams and destinies intertwine. Don't miss your chance to experience this captivating romance brought to life on stage.

WOLVERHAMPTON  
**GRAND**  
THEATRE

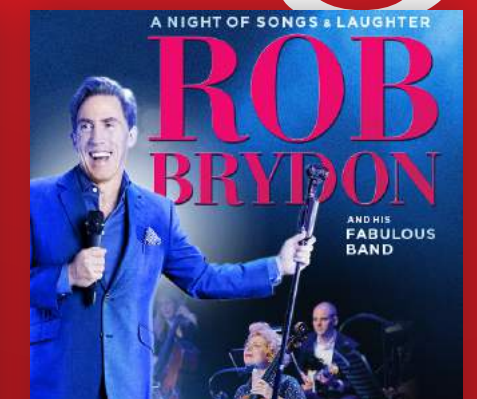
# Also Booking



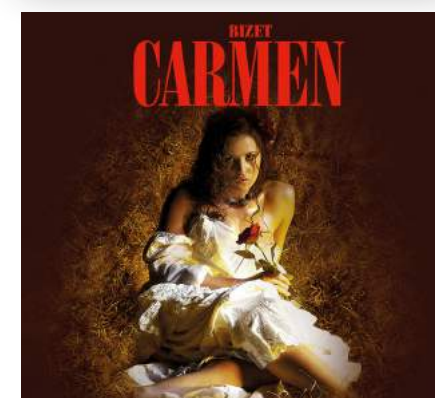
**Sun 29 Sep '24**  
Chris McCausland:  
Yonks!



**Tue 5 - Sat 9 Nov '24**  
Come From Away



**Wed 13 Mar '24**  
Rob Brydon - A Night  
Of Songs & Laughter



**Fri 12 Apr '24**  
Bizet's Carmen



**Sat 13 Apr '24**  
Puccini's Madama  
Butterfly



**Sat 27 -  
Sun 28 Jul '24**  
Bluey's Big Play

BOOK ONLINE AT **GRANDTHEATRE.CO.UK**  
BOX OFFICE: **01902 42 92 12**



# Relaxed

## PERFORMANCES

### *What is a relaxed performance?*

A Relaxed Performance is specifically designed and adapted for people who find regular performance settings difficult and families with children under 5. For more information visit the website or email [access@grandtheatre.co.uk](mailto:access@grandtheatre.co.uk)



### **Snow White**

Fri 15 Dec '23 - 11am  
Sat 16 Dec '23 - 11am



### **Madagascar The Musical**

Sun 2 Jun '24 - 11am

WOLVERHAMPTON  
**GRAND**  
THEATRE

BOOK ONLINE AT  
**GRANDTHEATRE.CO.UK**  
BOX OFFICE:  
**01902 42 92 12**