

spot light

IT WOULD BE CRIMINAL TO MISS OUR NEW SEASON

THE BEST OF THE WEST END
AND MORE

Bonnie & Clyde

*THE WEST END
SENSATION*

Shobna Gulati

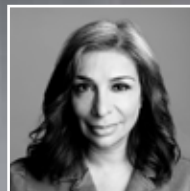
*EVERYBODY'S TALKING
ABOUT SHOBNA...*

Harry Ondrak-Wright

*RETURNS HOME WITH
MATTHEW BOURNE*

Snow White

*WE TALK TO CBEEBIES'
GYASI SHEPPY & LOCAL
STAR NIKI COLWELL EVANS
ABOUT OUR UPCOMING
PANTO*



Main image:
Bonnie & Clyde, previous cast photography.



Adrian Jackson
CEO & Artistic
Director

Welcome to our sixth issue of SpotLight!

Welcome to SpotLight, featuring an array of entertainment for the whole family.

We are delighted to present the best of the 'West End in Wolverhampton' throughout the year. We have always been a stage for the best in the world and will be presenting the newly announced London Palladium production of **THE WIZARD OF OZ** next summer, together with the West End transfers of **JESUS CHRIST SUPERSTAR**, **EVERYBODY'S TALKING ABOUT JAMIE**, **2:22 A GHOST STORY**, **SIX**, **BONNIE & CLYDE**, **LIFE OF PI**, **THE MOUSETRAP** and **COME FROM AWAY**.

To complement our West End productions, and with our commitment to programming world-class dance, we are proud to present, **MATTHEW BOURNE'S ROMEO AND JULIET**, Matthew Bourne's Wolverhampton debut. I am also thrilled to confirm the Grand Theatre has now become a member of Dance Consortium. The consortium exists to tour the best contemporary dance from across the world into local theatres in the UK. Together with other consortium member theatres, we will invite international companies to tour into our venues, ensuring the artists achieve the highest level of presentation for our enthusiastic audiences. This newly formed relationship will begin with the Grand hosting **THE SÃO PAULO DANCE COMPANY** in March 2024.

For our youngest theatregoers, we welcome back friends from our 2018 pantomime *Sleeping Beauty* - **Sooty, Sweep and Soo**, will be celebrating 75 years with **THE SOOTY SHOW** in April. **PEPPA PIG** returns in May and **Bluey** will make her UK stage debut with **BLUEY'S BIG PLAY** in July.

This Christmas, we present our very own pantomime, **SNOW WHITE**, which has been created entirely in-house, produced solely by us all here in Wolverhampton. The set and costumes are all brand new, designed and created especially for the Grand Theatre, with a hilarious new script written by our very own **Ian Adams** and **Tam Ryan**. With record sales last year with *Aladdin* and this year heading the same way, early booking is advised to secure the best seats in the house – it's never too early to start thinking about panto! There are some spectacular surprises which have never been seen in a Grand Theatre pantomime!

On behalf of the entire team at the Grand Theatre, we look forward to welcoming you.

SECURE MY BOOKING

Secure My
Booking

**TICKET REFUND
PROTECTION ALLOWS
YOU TO RECOVER
100% OF THE PAID
TICKET PRICE,
INCLUDING ALL FEES!**

Secure My Booking is available on phone & online purchases, and cannot be applied to bookings retrospectively. T&C's apply, for more information visit <https://securemybooking.com/terms/uk>


Secure My Booking costs just £1.95 per ticket and can be added when you purchase, so don't delay and book today!

YOUR GUIDE TO WHAT'S ON AT WOLVERHAMPTON GRAND THEATRE

- 02 WELCOME FROM CEO & ARTISTIC DIRECTOR ADRIAN JACKSON
- 08 VIP BOOTH EXPERIENCE
- 10 THE OCEAN AT THE END OF THE LANE
- 11 AN INTERVIEW WITH THE OCEAN AT THE END OF THE LANE WRITER, NEIL GAIMAN
- 12 THE BOOTLEG BEATLES
- AN EVENING WITH ANTON DU BEKE
- JUST MY IMAGINATION
- 13 THE GREATEST LOVE OF ALL
- AN EVENING OF BURLESQUE
- THE ELVIS WORLD TOUR
- 14 ANNIE
- 16 MATTHEW BOURNE'S ROMEO AND JULIET
- 17 AN INTERVIEW WITH DANCER, HARRY ONDRAK-WRIGHT
- 18 MOST HAUNTED: THE STAGE SHOW
- THE PUNDITS
- THE MAGIC OF THE BEE GEES
- 19 TOM DAVIS: UNDERDOG
- THE ONE LIKE JUDI LOVE
- BUFFY REVAMPED
- FRANK SINATRA - THE RETIREMENT CONCERT
- 20 FRIENDS OF THE GRAND MEMBERSHIP
- 22 PETER PAN GOES WRONG
- 23 AN INTERVIEW WITH MISCHIEF'S FOUNDERS
- 24 BILSTON OPERATIC COMPANY PRESENT CHITTY CHITTY BANG BANG
- 25 JESUS CHRIST SUPERSTAR
- 26 SNOW WHITE
- 28 AN INTERVIEW WITH PANTO PRINCE, GYASI SHEPPY
- 29 AN INTERVIEW WITH QUEEN DRAGONELLA, NIKI COLWELL EVANS
- 30 FIRST CALL YOUTH MEMBERSHIP

- 32 SARAH MILLICAN: LATE BLOOMER
- 
 - 33 STRANGER SINGS!
 - 34 RENDEZVOUS
 - 35 FASTLOVE
 - THE BEST OF FRANKIE VALLI AND THE FOUR SEASONS
 - STEWART LEE: BASIC LEE
 - 36 QUEENZ - THE SHOW WITH BALLS
 - SUPREME QUEEN
 - CIRQUE DU HILARIOUS: TEMPLE OF DELUSION
 - 38 EVERYBODY'S TALKING ABOUT JAMIE
 - 39 AN INTERVIEW WITH JAMIE STAR, SHOBNA GULATI
 - 40 CREATIVE LEARNING OPPORTUNITIES
 - 42 THE ROCKY HORROR SHOW
- 
 - 44 'A MODERN CLASSIC'

- 45 AN INTERVIEW WITH 2:22 A GHOST STORY WRITER, DANNY ROBINS
- 46 GETTING SOCIAL
- 50 SIX
- 51 AN INTERVIEW WITH LOCAL SIX STAR, NICOLE LEWIS
- 
 - 52 DIRECT FROM THE WEST END BONNIE & CLYDE
 - 53 WHO WERE BONNIE AND CLYDE?
 - 54 SOMETHING ABOUT GEORGE
 - GIOVANNI - LET ME ENTERTAIN YOU
 - THE DRIFTERS
 - 55 ROB BRYDON - A NIGHT OF SONGS & LAUGHTER
 - 56 SÃO PAULO DANCE COMPANY
 - 57 AWFUL AUNTIE
 - 58 JURASSIC EARTH
 - THE SOOTY SHOW
 - 60 SPEAK UP! SCHOOLS IN THE SPOTLIGHT
 - 62 FRANKIE BOYLE: LAP OF SHAME
 - TINY DANCER - THE MUSIC OF ELTON JOHN
 - GRAZIANO DI PRIMA: BELIEVE - MY LIFE ON STAGE
 - BACK TO BACHARACH
 - 64 CARMEN & MADAMA BUTTERFLY
 - 65 THE BOY AT THE BACK OF THE CLASS
 - 66 ACCESS A WORLD OF THEATRE
 - 68 STAGES SUMMER SCHOOL
 - 69 SIXTEEN25 YOUTH MEMBERSHIP

- 
 - 70 LIFE OF PI
 - 71 LIFE OF PI: TWO SLICES OF PI
 - 72 AN INTERVIEW WITH LIFE OF PI PUPPETEER, AKASH HEER
 - 73 WBOS PRESENT LOVE NEVER DIES
 - 74 PSYCHIC SALLY
 - THE SENSATIONAL 60S EXPERIENCE
 - 75 MICHAEL STARRING BEN
 - CHAKA - THE MUSIC OF CHAKA KHAN
 - TOM ALLEN: COMPLETELY
 - 76 PEPPA PIG'S FUN DAY OUT!
 - 77 MADAGASCAR THE MUSICAL
 - 78 DEMENTIA FRIENDLY THEATRE
 - 79 ACCESSIBLE PERFORMANCES
 - 80 FRANKIE GOES TO BOLLYWOOD
 - 81 THE MOUSETRAP
 - 83 UNFORTUNATE
 - 84 RELAXED PERFORMANCES
 - 85 MINISTRY OF SCIENCE LIVE - SCIENCE SAVED THE WORLD
 - SWEET CAROLINE
 - LEGEND - THE MUSIC OF BOB MARLEY
 - 86 BLUEY'S BIG PLAY
 - 87 THE WIZARD OF OZ
 - 88 A SPOTLIGHT ON OUR BUSINESS CLUB
 - 90 GENERAL INFORMATION
 - 91 ALSO BOOKING



enjoy
wolverhampton
Business Improvement District

ONE



GIFT CARD

SUPPORTS A WHOLE CITY CENTRE

When you buy a Wolverhampton City Centre Gift Card for a loved one, you're directly supporting the local economy and retailers.

Accepted by over 100 businesses from food to fashion, entertainment to beauty and a whole lot more.

enjoywolverhamptongiftcard.com

WOLVERHAMPTON
GRAND
THEATRE

BE PART OF

Our History

SEATS & BRICKS MAKE AN IDEAL PRESENT FOR A SPECIAL OCCASION OR AS A MEMORIAL FOR A LOVED ONE

In recognition of your donation, an engraved brass plaque will be placed on the back of your seat, or on a brick in our Encore Lounge. You'll also receive a commemorative certificate.*

SEAT
PLAQUES
£200
FOR
10 YEARS

BRICK
PLAQUES
£100
FOR
10 YEARS



FOR MORE INFORMATION,
CONTACT THE EVENTS TEAM ON
EVENTS@GRANDTHEATRE.CO.UK

*t&c's apply

HOSPITALITY



Enhance your booth experience with our **Grand Grazing Platter**.
From £16.50 per person

Be our guest, relax and unwind with VIP hospitality.

Add a touch of elegance to your visit with an exclusive booth and personal waiter service. A sure way to make your Grand Theatre experience truly memorable. You and up to 5 guests can enjoy your own private space pre-show and during the interval with packages designed to suit everyone.

SILVER* PACKAGE

For up to six people and includes the following: hot or soft drink, bar snacks, show programme*, waiter service & complimentary cloakroom.

GOLD* PACKAGE

For up to six people and includes the following: bottle of wine, bar snacks, show programme*, waiter service & complimentary cloakroom.

PLATINUM* PACKAGE

For up to six people and includes the following: a bottle of prosecco, chocolates, bar snacks, show programme*, waiter service & complimentary cloakroom.

PRICES START FROM £50

*show programme not available on all shows

Book your VIP booth experience online at grandtheatre.co.uk or call the Box Office on 01902 42 92 12 (Phone lines open 2pm - 6pm Monday - Friday)

Booths must be booked 48 hours in advance of the performance. Grazing platters must be booked five days in advance of the performance. Vegetarian and vegan options available upon request. Items may vary subject to availability. Information on allergens available upon request.

"I highly recommend treating yourself to this experience, it's worth every penny."

BEAT THE QUEUES WITH THE TAP OF AN APP



**DOWNLOAD OUR APP
AND PRE-ORDER YOUR
INTERVAL REFRESHMENTS
AHEAD OF YOUR VISIT.**

Available on Android and Apple, search **WGT Click & Collect** in your app store OR scan below for direct download.



THE NATIONAL THEATRE'S FIVE-STAR SMASH HIT IS COMING TO WOLVERHAMPTON



Sunday Times



Mail on Sunday



Time Out



Your MCR



Broadway World



Manchester Evening News



The Reviews Hub



Daily Telegraph



Independent



WhatsOnStage



Lancashire Telegraph



The Arts Desk



Lancashire Telegraph



British Theatre Guide

THE OCEAN AT THE END OF THE LANE

based on the novel by **NEIL GAIMAN** adapted by **JOEL HORWOOD** directed by **KATY RUDD**

Neil Gaiman's thrilling adventure of fantasy, myth and imagination comes to life on stage in this five-star spectacular from the producers of *War Horse* and *The Curious Incident of the Dog in the Night-Time*.

The Ocean At The End Of The Lane

Tuesday 26 - Saturday 30 September '23

Evenings at 7.30pm,

Wednesday, Thursday & Saturday matinees at 2.30pm

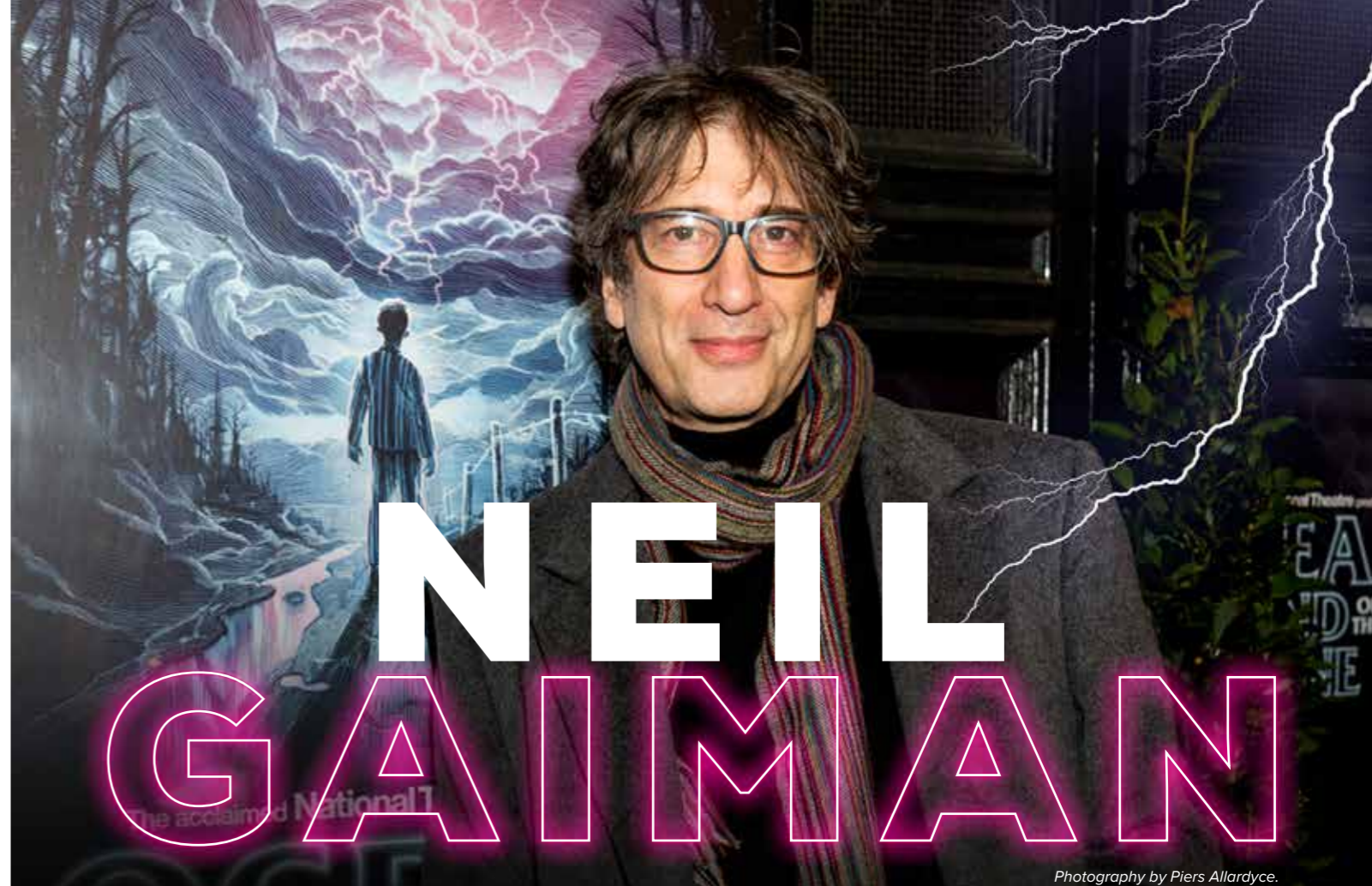
From the imagination of Neil Gaiman, best-selling author of *Coraline*, *Good Omens* and *The Sandman*, comes the National Theatre's major new stage adaptation of **THE OCEAN AT THE END OF THE LANE**.

This thrilling adventure of fantasy, myth and friendship, is a five-star spectacular which blends magic with memory in a tour-de-force of storytelling that takes audiences on an epic journey to a childhood once forgotten.

Returning to his childhood home, a man finds himself standing beside the pond of the old Sussex farmhouse where he used to play. He's transported to his 12th birthday when his remarkable friend Lettie claimed it wasn't a pond, but an ocean – a place where everything is possible...

Plunged into a magical world, their survival depends on their ability to reckon with ancient forces that threaten to destroy everything around them.

Tickets from £15*
Age Guidance: 12+



Photography by Piers Allardyce.

From page to stage, author Neil Gaiman on the ocean of opportunity the stage play brings to his best-selling novel.

Opening in 2019 at the Dorfman Theatre before transferring to London's West End, the National Theatre's adaptation of Neil Gaiman's award-winning book *The Ocean at the End of the Lane* is currently on tour and will perform here in Wolverhampton as its penultimate venue before returning to London's West End this autumn. Author of the original novel, Neil Gaiman, took time out to talk to us about the play.

The book is loosely based on your childhood. What was the starting point?

The book began with me wanting to try and explain to my wife where I grew up and what that world was like. She could take me to her childhood home because it's still the same, but I couldn't take her to where I grew up [in East Grinstead] because the place had long since been demolished; lots of lovely neat little housing estates covered the gardens and the fields and lanes. So for me it was kind of an effort to try and evoke a past and a sense of place. An interesting side of it for me too was that I realised that I hadn't heard, for a very long time, the Sussex accent of my childhood. Mrs Weller came in and cleaned once a week and Mr Weller came in and did the gardens. They were probably in their 80s and they had

proper Sussex accents – almost like a West Country burr. I resolved to write a novel with that in too.

How did you create the Hempstocks?

I was told by my mother – quite erroneously, I discovered, when I did my research – that the farm half-way down our lane was in the *Doomsday Book*. And that was the start of the Hempstocks in my head; who they were and what I wanted to do with them.

Do you find writing about family especially fascinating?

I don't think I've ever been able to avoid writing about family, even when I thought I was writing about something else. Whether it's biological family or the family we make. In the novel I created a semi-fictional family for myself, and in the play version it was one step further away from my family, which I think looking back on is incredibly healthy! But the boy is definitely me.

The play received amazing reviews when it premiered. Without any spoilers, do you have any favourite moments?

There is something astounding about the moment when they enter the ocean. That completely fascinates me. And you're going to see miracles made out of bits of rubbish and old plastic bags and nightmarish birds beyond your

'It still takes me by surprise every time I watch.'

imagination. It still takes me by surprise every time I watch.

Is it true that you were so moved by the play when you saw it in rehearsals that you cried?

I saw the first full run through. About ten minutes from the end I had tears running down my face. I thought that this was terribly embarrassing and I was discreetly trying to flick them away.

You describe yourself as a storyteller. What inspired you to be a writer?

I'm not sure that all writers are frustrated performers, but for me it was the joy in getting to be *all* of the characters. As a writer you get to do that. Being a kid who loved books I could think of nothing cooler than giving people the pleasure that I got and I hope the people of Wolverhampton feel just that!

The Bootleg Beatles

Sunday 1 October '23 - 7.30pm

From *Love Me Do* to *Let It Be*, from the Cavern to the Apple rooftop, from black and white to psychedelic technicolour, the world's premier *Beatles* band returns to take you on a whistle-stop journey through the most vibrant revolutionary and divisive decade of all – the Swinging Sixties.

It's all here...the iconic mop tops and the Chelsea boots, the Sgt Pepper tunics and the Chesterfield suits. Each tiny vocal inflection and each witty Beatle quip, all meticulously studied on this Magical Mystery trip.

With a little help from their orchestral ensemble and featuring a special set to commemorate the sixtieth anniversary of the *Please Please Me* LP, this multi-media show is an absolute must-see for *Beatles* fans of all ages.



Tickets from £15*



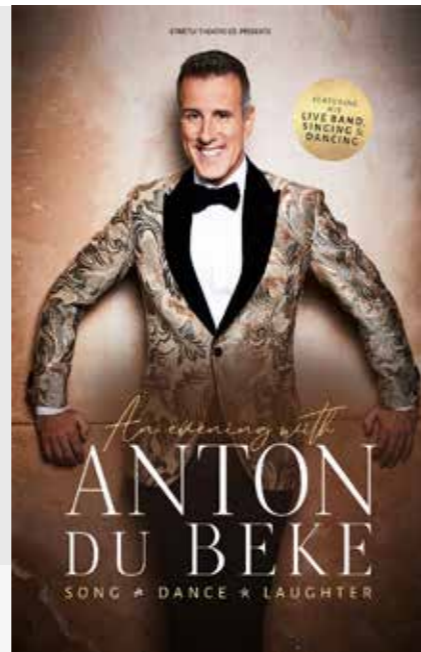
An Evening With Anton Du Beke

Monday 2 October '23 - 7.30pm

Strictly Come Dancing legend and judge, **Anton Du Beke**, takes to the stage with his show in 2023. With his live band, special guest singer **Lance Ellington** and his dancers, expect a fab-u-lous evening of song, dance and laughter.

Anton will be performing his favourite songs and dances that have inspired his career throughout his life. Expect behind the scenes stories from his time on *Strictly* that will have you laughing out loud.

Don't miss this special opportunity to get up close to the King of the ballroom in 2023.



Tickets from £25*



Just My Imagination

Thursday 5 October '23 - 7.30pm

JUST MY IMAGINATION is a celebration of the Motown legends, *The Temptations*, named by Billboard Magazine as 'The Number 1 Group In The History Of Rhythm And Blues!'

From their first hit, *The Way You Do The Things You Do* in 1964, through the career highs of *My Girl*, *Ain't Too Proud*, *Get Ready*, *Papa Was A Rolling Stone* and *Just My Imagination*, this iconic group's musical legacy spanned more than 50 years and 24 Temptations.

JUST MY IMAGINATION brings a fresh, exhilarating and incomparable night of sing along, dance along magic to theatres throughout the UK!



Tickets from £18.50*



The Greatest Love Of All

Friday 6 October '23 - 7.30pm

Fresh from her show-stopping appearance on *Got Talent: All Stars 2023*, **Belinda Davids** returns to the UK with her acclaimed stage show.

Whitney's musical legacy is brought to life in this critically acclaimed tribute show described as "mind-blowingly spot on".

Be stunned by the breathtaking vocals of **Belinda Davids** – a RiSA chart-topping artist in her home country of South Africa – who has performed alongside the likes of *Keri Hilson*, *Keyshia Cole* and *Monica* and featured on Fox TV's *Showtime at the Apollo* and BBC1 TV's *Even Better Than the Real Thing*.

*Not associated with the Estate of Whitney Houston



Tickets from £19.50*



An Evening Of Burlesque

Saturday 7 October '23 - 7.30pm

A night of laughter, cabaret, mystery, and glamour!

The UK's longest running burlesque show is back – and it's bigger than ever. The ultimate variety show blends stylish cabaret, comedy, music, circus and burlesque featuring world-class entertainers and stars of the stage and screen in an extravaganza of glitz and glamour! Expect fun, feathers and fabulous costumes.

Content is subject to change.



Tickets from £15*
Age Guidance: 18+ Advised



The Elvis World Tour

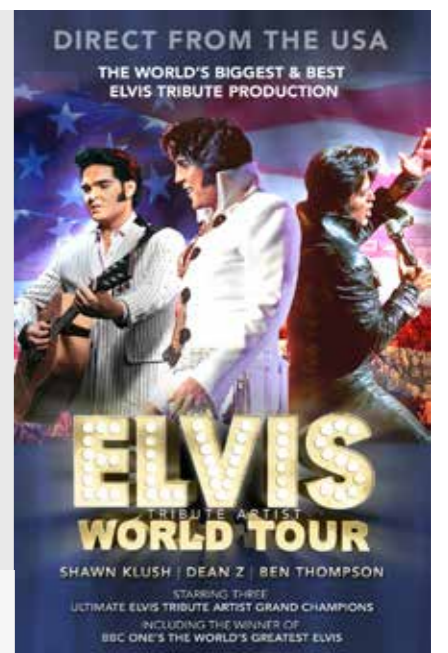
Sunday 8 October '23 - 7.30pm

Direct from the USA, the world's biggest, best and most successful *Elvis* tribute show returns to the UK. Starring three winners of *Elvis Presley Enterprises' Ultimate Elvis Tribute Artist Contest* including the Winner of BBC One's *The World's Greatest Elvis* – **Shawn Klush** (USA), **Dean Z** (USA) and **Ben Thompson** (UK).

Don't miss this incredible production, starring three of the world's very best *Elvis* tribute artists together in one show with an incredible live band and orchestra.

Tickets selling fast!

VIP tickets available, contact Box Office for details.

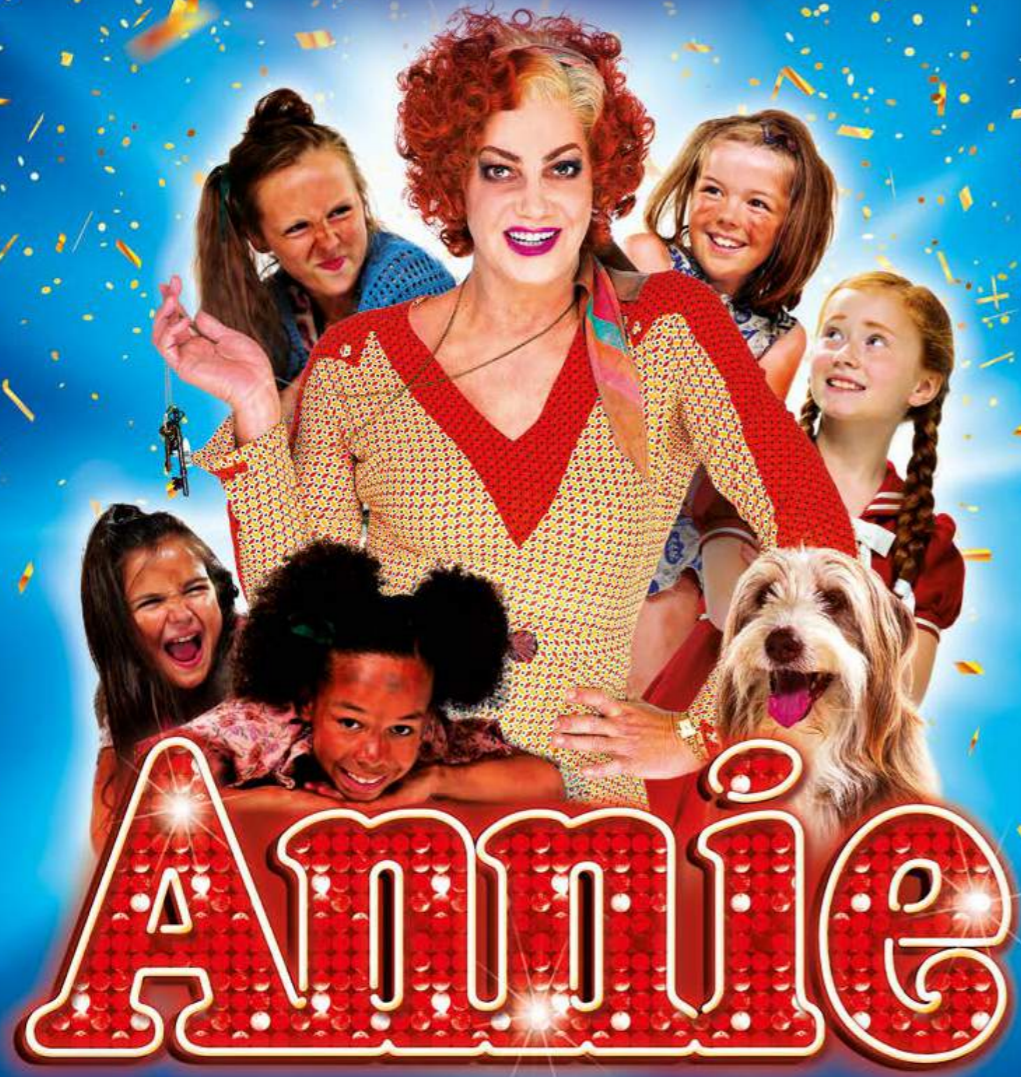


Tickets from £18*



CRAIG REVEL HORWOOD

AS MISS HANNIGAN



WITH

JODIE PRENGER AS MISS HANNIGAN
SAT 14 OCT

Annie

Tuesday 10 - Saturday 14 October '23

Evenings at 7.30pm,
Wednesday & Saturday matinees at 2.30pm

The smash-hit West End production of **ANNIE** comes to Wolverhampton for one week only. This 'glorious revival' (*The Times*) stars *Strictly Come Dancing* judge **Craig Revel Horwood** (Tue - Fri) and **Jodie Prenger** (Sat) as the tyrannical Miss Hannigan!

Set in 1930s New York during The Great Depression, brave young Annie is forced to live a life of misery at Miss Hannigan's orphanage. Her luck soon changes when she's chosen to spend a fairytale Christmas with famous billionaire, Oliver Warbucks. Meanwhile, spiteful Miss Hannigan has other ideas and hatches a plan to spoil Annie's search for her true family...

With its Tony® award-winning book and score, including the unforgettable songs *It's The Hard-Knock Life*, *Easy Street*, *I Don't Need Anything But You* and *Tomorrow*, you can bet your bottom dollar that you'll love it!

The appearance of any member of cast is subject to change and may be affected by contracts, holiday, illness, or events beyond the producers' control.

Tickets from £19.75*



LEAMORE

WINDOWS & CONSERVATORIES

ESTABLISHED 1983



WINDOWS | DOORS | CONSERVATORIES | BIFOLD DOORS | REPAIRS

CELEBRATING

40 YEARS
LEAMORE WINDOWS

Showroom at
Reaymer Close, Bloxwich,
Walsall WS2 7QZ

01922 473737

www.leadmorewindows.com

NEW/ADVENTURES

★★★★★
'ELECTRIFYING. ONE OF MATTHEW BOURNE'S
SMARTEST, SEXIEST SHOWS EVER'
DAILY TELEGRAPH

NEW ADVENTURES AND SADLER'S WELLS PRESENT

Matthew Bourne's ROMEO + JULIET

Music by PROKOFIEV



Matthew Bourne's Romeo And Juliet

Tuesday 17 - Saturday 21 October '23

Evenings at 7.30pm,

Thursday & Saturday matinees at 2.30pm

FREE EVENT: Matthew Bourne In Conversation with Jessica Ward. Directly after the Tuesday evening performance on 17 October, Matthew Bourne will be joined on stage by Jessica Ward, Trustee of New Adventures and Principle of Elmhurst Ballet School, for a live interview about **ROMEO AND JULIET** and more. If you book a ticket for this performance, you are invited to join us for this free event. This event is for Tuesday evening ticket holders only.

Tickets from £19.50*
Age Guidance: 14+

Matthew Bourne's **ROMEO AND JULIET** gives Shakespeare's timeless story of forbidden love a scintillating injection of raw passion and youthful vitality. Confined against their will by a society that seeks to divide, our two young lovers must follow their hearts as they risk everything to be together. A masterful re-telling of an ageless tale of teenage discovery and the madness of first love, **ROMEO AND JULIET** garnered universal critical acclaim when it premiered in 2019, and now returns to the New Adventures repertoire alongside the very best of Bourne's world renowned dance theatre productions.

Directed and choreographed by **Matthew Bourne**, collaborating with the *New Adventures* Artistic team; **Etta Murfitt** (Associate Artistic Director), **Lez Brotherston** (Set and Costume design), **Paule Constable** (Lighting Design), **Paul Groothuis** (Sound Design) and **Arielle Smith** (Associate Choreographer) with **Terry Davies'** thrillingly fresh orchestrations of Prokofiev's dynamic score.



HARRY

ONDRAK-WRIGHT

*on performing in his hometown of
Wolverhampton, having danced all
over with world with Matthew Bourne*

"I auditioned at Birmingham Hippodrome and I got a call back asking if I'd like to be part of the show, Matthew Bourne's *Lord of the Flies*. It was my first time performing in a large-scale theatre and we performed alongside incredible professionals who we could all look up to - they are now my colleagues. I knew there and then the path I wanted to take and the company I wanted to be a part of."

"At the age of 18 I moved to London to study at London Contemporary Dance School. During my graduating year, a choreographer called Jamaal Burkmar won the New Adventures Choreographer Award and was commissioned to create a triple bill. It was whilst I was performing in that show that Matthew Bourne saw me again. We'd worked out that my graduation aligned with the revamp of *Swan Lake*. He told me after the show that he had an interest in me as a dancer and before I knew it, I was part of New Adventure's Swan School. Swan School is a preparation scheme for *Swan Lake* to train us up for auditions. I found out a few weeks later that I'd got the job and to go straight in to one of his most iconic pieces was mind-blowing."

Harry went on to perform *Swan Lake* in Japan, Korea and China before taking the show to the US in Los Angeles, Washington DC and New York. Roles soon followed in Matthew Bourne's version of *The Nutcracker* and *The Car Man* at the Royal Albert Hall.

"*The Car Man* at the Royal Albert Hall was such a hard-hitting show, it's visceral, sexy and fun to perform! It was a crazy experience. Now, equally as thrilling, for *Romeo and Juliet* I perform Edmund and Mercutio, I also cover a role, Lennox, they are a completely new non-binary character and I get to create that role with Jackson Fisch and Enrique Ngbokota. It's exciting to be able to establish a new character and that the stories continue to develop."

"I am so excited to bring this show

home. It's been over a decade since I last performed at the Grand and New Adventures have never performed at the Grand before. When I saw the theatre on the tour list, I was so happy and excited. It means my friends and family will all be able to come and see me perform and it feels like a full circle moment. Eight years after leaving Wolverhampton to live in London and pursue my dance career, having performed all over the world in a dream job, I get to share what I've been doing with my family, friends and home crowd."

*'It is so, so important
that young, aspiring
performers of
Wolverhampton will
have this opportunity
on their doorsteps.'*

"I remember coming to the Grand Theatre as a child and going to theatre always inspired me, but I think the fact that New Adventures is coming to Wolverhampton is a massive thing not only for the Grand, but for the city. If as a child I'd had the opportunity to see a dance show of this calibre and this scale, it would have meant the world to me and perhaps made me realise at a younger age that this was a potential career choice for me. It is so, so important that young, aspiring performers of Wolverhampton will have this opportunity on their doorsteps - to see Matthew Bourne's New Adventures at the Grand - and the fact that I get to be part of it, what an honour."

Most Haunted: The Stage Show

Monday 23 October '23 - 7.30pm

The acclaimed world number one paranormal show. *Most Haunted* is the original and most successful worldwide paranormal investigation series ever made and premieres its spine-chilling theatre show in 2023/24.

Presented by **Yvette Fielding**, the first lady of the paranormal together with **Karl Beattie** and the *Most Haunted* team, you will be taken on the darkest, most terrifying journey of your life.

MOST HAUNTED: THE STAGE SHOW will take the theatrical experience to a whole new level with audience members taken back to the Victorian age of séance and Ouija board and invited to conduct their very own ghostly investigation.



Tickets from £18.50*

The Pundits

Tuesday 24 October '23 - 7.30pm

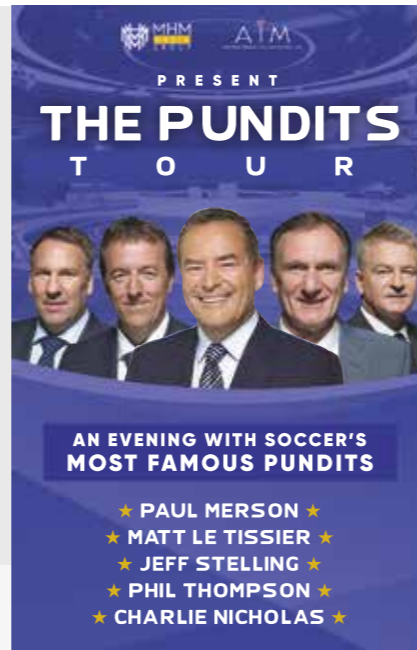
Come and join football punditry royalty. Host – *Sky Sports*' **Jeff Stelling** – is joined by the ultimate panel of pundits: **Paul Merson, Matt Le Tissier, Phil Thompson** and **Charlie Nicholas**. The boys are really back in town!

Jaw-dropping revelations and hilarity ensue as the quintet with an opinion on absolutely everything, do what they do best – talk football. . . from players to managers and everything in between.

Anecdotal stories of the guests' colourful playing days on and off the field make this a dream night for any soccer fan. A Q&A features, enabling you to ask the lads whatever you want.

Make sure you don't miss out on what is sure to be the best football pundit show that you will see live this year.

VIP tickets available, contact Box Office for details.



Tickets from £20*



The Magic Of The Bee Gees

Wednesday 25 October '23 - 7.30pm

Whether you're a brother or whether you're a mother, when the feeling's gone and you can't go on, it's time to put on your dancing shoes, for the night out of the year you have been waiting for, as we celebrate the songs of music royalty, the *Bee Gees*.

With a brand-new show for 2022, complete with stunning light and video show, prepare to experience the distinct sound of one of the greatest bands to have ever graced the stage in this unforgettable concert spectacular. Immerse yourself in the brothers' music through the Sixties, Seventies, and Eighties – including hits they wrote for artists such as *Celine Dion, Diana Ross*, and *Dolly Parton*.

Join us for this breath-taking concert spectacular, taking you on a musical journey through all your favourite songs, including *Night Fever, Stayin' Alive, More Than A Woman, You Should Be Dancing, How Deep is Your Love* and many more!

This is a tribute show and is no way affiliated with any original artists/estates/management companies or similar shows.

Promoter reserves the right to alter the programme.



Tickets from £19*



Tom Davis: Underdog

Thursday 26 October '23 - 8pm

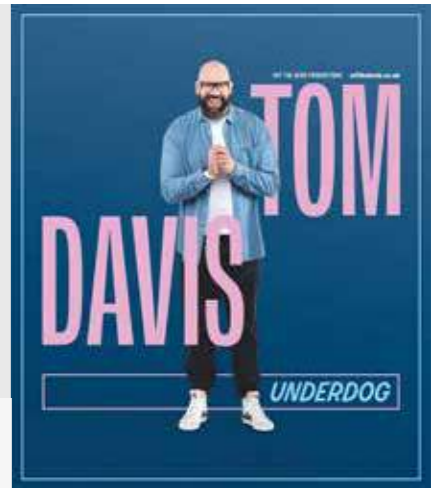
Sweet, sweet soul **Tom Davis** is best known for hit shows *King Gary, The Curse, Murder In Successville, Live At The Apollo* and his hugely popular podcast *Wolf and Owl* with Romesh Ranganathan.

Embarking on his biggest tour to date with his brand new show, **UNDERDOG**, Tom will be exploring life as the longshot. From leaving school with no qualifications to years working on building sites, all the way to the difficult road to fatherhood, acting in blockbuster films and yet still being told he's punching by a waiter.

Big **Tom Davis**' return to stand up should not be missed.

Tickets £22.75*

Age Guidance: 14+



The One Like Judi Love

Friday 27 October '23 - 8pm

Bringing her fresh, unapologetic and charismatic real talk to theatres across the country, **THE ONE LIKE JUDI LOVE** hits theatres on her first official tour! Expect unrelenting and hilarious anecdotes from Judi's life!

'Not so much a comic, more a force of nature' – Evening Standard

'Infectiously vivacious' – Chortle

'Laugh-out-loud moments' – iNews

Regular panellist on *Loose Women* and as seen on *Taskmaster, The Jonathan Ross Show, The Graham Norton Show, 8 Out Of 10 Cats Does Countdown* and *The Royal Variety Performance*.

Tickets £22.75*

Age Guidance: 14+



Buffy Revamped

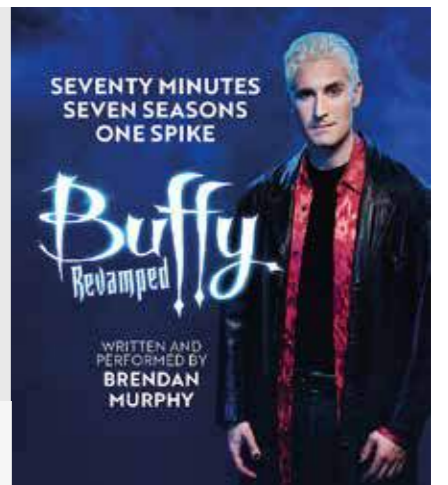
Saturday 28 October '23 - 7.30pm

Seventy minutes. Seven seasons. One Spike.

This fast-paced gem brings you the entire 144 episodes of the hit 90s TV show, *Buffy the Vampire Slayer*, as told through the eyes of the one person who knows it inside out... Spike.

"Do yourself a favour, go see Buffy: Revamped! This show slays!" ★★★★★ North West End

Tickets from £15*



Frank Sinatra - The Retirement Concert

Sunday 29 October '23 - 3pm

Join **Richard Shelton** – widely acknowledged as the world's leading dramatic interpreter of *Frank Sinatra* – in concert with the legendary **Syd Lawrence Orchestra**.

Featuring all the *Sinatra* classic songs and celebrating the greatest voice of the century in one memorable concert! Originally from Wolverhampton but now touring the world, Richard has performed for HRH King Charles, *Sir Elton John*, with the *Royal Philharmonic Orchestra, BBC Concert Orchestra* and *BBC Big Band* and was nominated Best Actor in a Leading Role for his portrayal of *Frank Sinatra* in the hard hitting drama *Rat Pack Confidential* in London's West End.

Tickets from £17*





A BIG THANK YOU!



I am very proud to be Chair of Friends of the Grand. I would like to take this opportunity to thank each and every member for their continued and ongoing support.

Wolverhampton Grand Theatre offers significant advantages to members, including ticket discounts, priority booking opportunities and exclusive members only events both at the theatre and in the wider community.

As members, we provide extra support the theatre requires by way of investment in the theatre itself, alongside its wider social projects such as the Memory Café, for people living with dementia, and the Intro To Panto tour for local primary schools.

These community projects are continuously expanding all thanks to your ongoing support. This year, the Memory Café branched out to include provision for Black, African & Caribbean communities with soul and Motown performances. The Memory Café has just celebrated its 4th anniversary, and now holds 3 gatherings a month. The Intro To Panto tour visited 20 schools over the Christmas period, engaging 7,000 young people who may not get the opportunity to experience the wonders of live performance, creating the next generation of theatre lovers.

A Friends of the Grand membership will secure your legacy in keeping this historic establishment alive. Join us in preserving this jewel in the crown of Wolverhampton.

Richard Bourne
Friends Of The Grand Chair

'These community projects are continuously expanding all thanks to your ongoing support.'



love theatre?

THE GRAND THEATRE MEMBERSHIP
THAT GIVES... **WHILE YOU SAVE**

1	2	3
single	standard	family
1 discounted ticket per production* 1 invitation to Friends only events	2 discounted tickets per production* (for family or friends) 2 invitations to Friends only events	4 discounted tickets per production* (for family or friends) 4 invitations to Friends only events
£22 per year	£32.50 per year	£55 per year

THE BENEFITS

- **15% DISCOUNT** on most performances*
- **10% CLUB MEMBERSHIP**, giving you savings at selected local businesses
- **Access to Friends only social events**
- Invitation to the Friends AGM (with special guest speaker)
- **Entry to monthly prize draws**
- **All major updates and announcements** through exclusive e-newsletters

**JOIN TODAY BY VISITING
GRANDTHEATRE.CO.UK/MEMBERSHIPS**



★★★★★
 'RIOTOUSLY FUNNY. AN ABSOLUTE MUST SEE'
 Whatsonstage

THIS IS NOT A
 PANTOMIME

PETER
 PAN GOES
 WRONG



Peter Pan Goes Wrong

**Monday 30 October -
 Saturday 4 November '23**

Evenings at 7.30pm,
 Wednesday & Saturday matinees at 2.30pm

Following their multi award-winning sell-out success with *The Play That Goes Wrong* and the BBC TV series *The Goes Wrong Show*, **Mischief** return with their riotous spin on a timeless classic, the West End smash hit **PETER PAN GOES WRONG**.

The members of the Cornley Drama Society are back on stage, battling technical hitches, flying mishaps and cast disputes as they attempt to present J.M Barrie's much-loved tale. But will they ever make it to Neverland?

Mischief's unique brand of hilarious, 'gut-busting' comedy (*New York Times*), has found universal appeal. Catch them in Wolverhampton and brace yourselves for an awfully big adventure!

Tickets from £15.50*



*Photograph
 features previous cast*



Peter Pan
 GOES WRONG

How did
 it all go
 right for
 the team
 behind
 Peter
 Pan Goes
 Wrong?

Mischief on a decade of mayhem, and why now is the perfect time for a nationwide tour of **PETER PAN GOES WRONG**.

When talking to the team that turned mishap into a fine art, there's a question that inevitably comes up: has anything ever actually gone wrong?

Jonathan Sayer, Henry Shields and Henry Lewis, who together form the core creative team of **Mischief**, have been causing mayhem for more than a decade now. Their success started with *The Play That Goes Wrong*, which grew from a short run in a pub theatre in 2012,

where they had to lean against the set to stop it from accidentally falling over, to conquering the West End, Broadway and the whole of the UK, with productions playing in every continent (except Antarctica).

As **PETER PAN GOES WRONG** sets off on a UK tour, the team remember one particularly hilarious moment. 'At the end of act one there's a moment when Pan falls from the sky because his wire has snapped,' says Lewis. 'The way we do it is that the actor flies out, then a dummy dressed in the same clothes falls down to create the illusion. During one performance, they were doing a scene in the nursery where Pan is talking to Wendy and suddenly the dummy dropped. Pan said the immortal line, 'ignore that, that's not me. That's the other, dead Pan.'

Sayer adds: 'If that dummy drops, that's it, the game's up. There's little you can do on stage, you can't just sidestep it.'

It's been a very Peter Pan year for the trio. As well as the UK tour, they have just been performing the show on Broadway - where it was nominated for eight awards - and are now in LA for a run at the Ahmanson Theatre.

A few days earlier, Shields and Sayer were watching a grainy recording they made of the show's very first run in a tiny theatre in London in 2013. 'That was a really stark reminder of how far we've come,' says Shields. 'There are lots of



'There's such a need to laugh at the moment'

bits in the recording that are in the show now on Broadway, but there's also so much that's changed and evolved over time.'

Having played Wolverhampton with *The Play That Goes Wrong* (twice) and *Groan Ups*, **Mischief** make a welcome return with **PETER PAN GOES WRONG** - Lewis explains, it's the perfect time for the show. 'It's all about not growing up and making life an adventure and laughing through it. I think that's a message at the moment that really resonates.'

For Sayer, 'There's such a need to laugh at the moment. Post-pandemic it has a kind of profundity to it that didn't exist beforehand. There's a need for silliness now, whereas before people would have just thought 'that's nice'. Right now, people could really do with some total nonsense, silliness and joyousness for a couple of hours.'

BILSTON OPERATIC COMPANY
PRESENT



MUSIC AND LYRICS BY **RICHARD M. SHERMAN** AND **ROBERT B. SHERMAN**

**Bilston Operatic Company
Present Chitty Chitty
Bang Bang**

Wednesday 8 - Saturday 11 November '23

Evenings at 7.30pm,
Wednesday, Friday & Saturday matinees at 2.30pm

Tickets from £12.50*



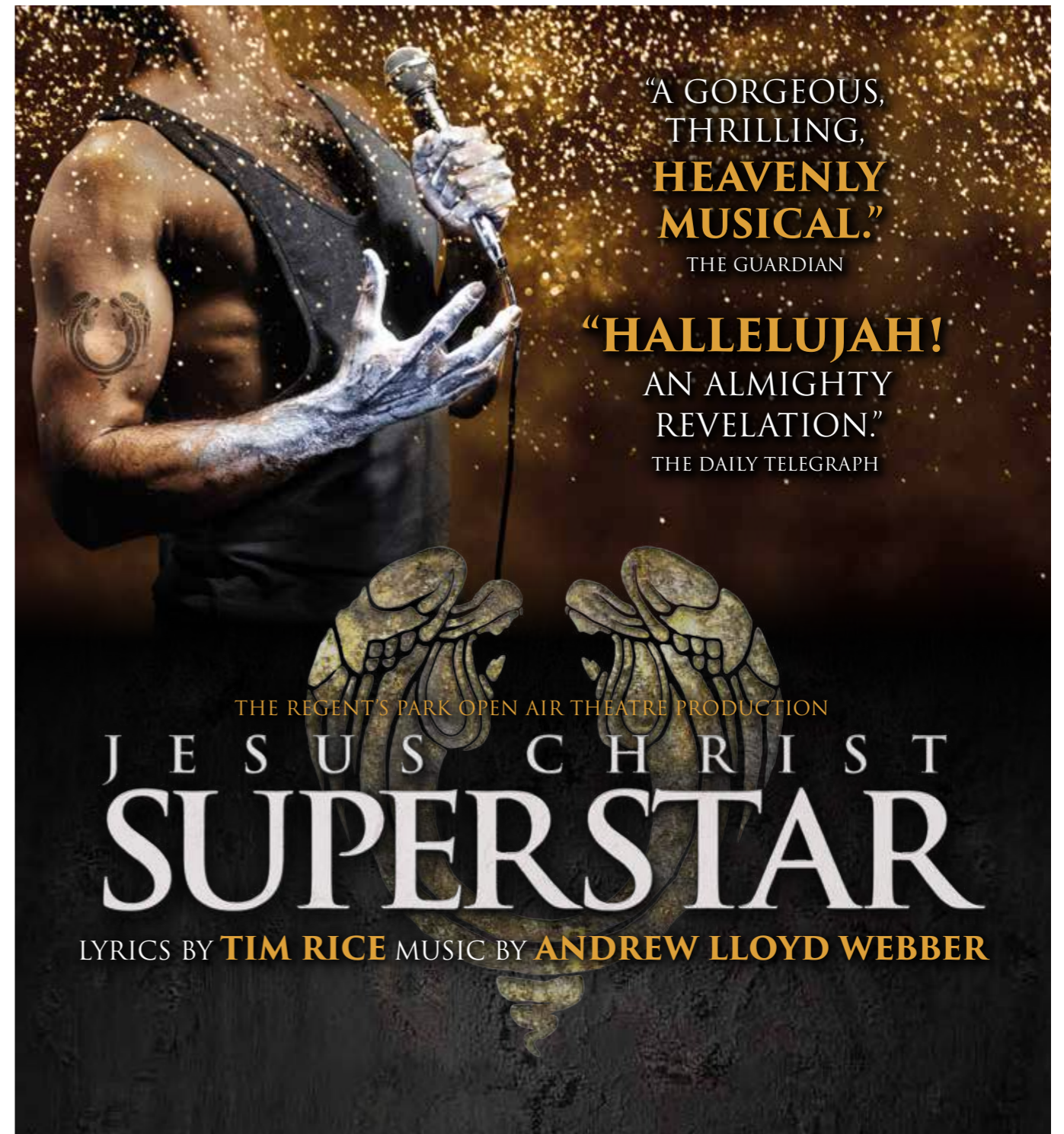
Everyone's favourite flying car comes to life in the musical adaptation of the beloved family film.

Take a fantastic musical adventure with an out-of-this-world car that flies through the air and sails the seas. Based on the beloved 1968 film version of *Ian Fleming's* children's book, and featuring an unforgettable score by the *Sherman Brothers* (*Mary Poppins*), **CHITTY CHITTY BANG BANG** is one family-friendly blockbuster that audiences will find "Truly Scrumptious".

An eccentric inventor, Caractacus Potts sets about restoring an old race car from a scrap heap with the help of his children Jeremy and Jemima. They soon discover the car has magical properties including the ability to float and take flight. Trouble occurs when the evil Baron Bomburst desires the magic car for himself. The family joins forces with Truly Scrumptious and batty Grandpa Potts.

This is an amateur performance.

Information is correct as of September 2023
*A £4 booking fee applies to all purchases. Book online at grandtheatre.co.uk



"A GORGEOUS,
THRILLING,
**HEAVENLY
MUSICAL.**"

THE GUARDIAN

"HALLELUJAH!
AN ALMIGHTY
REVELATION!"

THE DAILY TELEGRAPH

THE REGENT'S PARK OPEN AIR THEATRE PRODUCTION

J E S U S C H R I S T
SUPERSTAR

LYRICS BY **TIM RICE** MUSIC BY **ANDREW LLOYD WEBBER**

Jesus Christ Superstar

Tuesday 14 - Saturday 18 November '23

Evenings at 7.30pm,
Wednesday & Saturday matinees at 2.30pm

An album that inspired a **revolution**. A **revelation** that changed the world. A **reinvention** for this millennium.

Timothy Shearer (*Crazy for You*, *Into the Woods*) directs this mesmerizing new production of the iconic global phenomenon, **JESUS CHRIST SUPERSTAR** which comes to Wolverhampton for

1 week only! Originally staged by London's Regent's Park Open Air Theatre, this reimagined production won the 2017 Olivier Award for Best Musical Revival, garnering unprecedented reviews and accolades.

Choreographed by **Drew McOnie** (*King Kong*, *Strictly Ballroom*), with music and lyrics by **Andrew Lloyd Webber** and **Tim Rice**, **JESUS CHRIST SUPERSTAR** is set against the backdrop of an extraordinary series of events during the final weeks in the life of Jesus Christ, as seen through the eyes of Judas. Reflecting the rock roots that defined a generation, the legendary score includes *I Don't Know How to Love Him*, *Gethsemane* and *Superstar*.

Don't miss your chance to see this "gorgeous, thrilling, heavenly musical." – *The Guardian*.

Tickets from £20*
Age Guidance: 10+



Information is correct as of September 2023
*A £4 booking fee applies to all purchases. Book online at grandtheatre.co.uk

WOLVERHAMPTON GRAND THEATRE
PRESENTS

CBEEBIES'
**EVIE
PICKERILL**

**KELLE
BRYAN**

CBEEBIES'
**GYASI
SHEPPY**

**TAM
RYAN**

**NIKI COLWELL
EVANS**

**IAN
ADAMS**



SNOW WHITE

THE FAIREST PANTO OF THEM ALL!

**SATURDAY 2 DECEMBER 2023
- SUNDAY 7 JANUARY 2024**



GRANDTHEATRE.CO.UK
#WOLVESGRANDPANTO



THE FAIREST PANTO OF THEM ALL!

Mirror, mirror, on the wall, don't miss the fairest pantomime of them all...we promise it will be a truly WICKED adventure!

The ultimate festive family spectacular stars **Kelle Bryan** (*Eternal, Hollyoaks, Loose Women*) as the Good Fairy Elementa, with **Gyasi Sheppy** (*CBeebies*) as our dashing Prince and **Niki Colwell Evans** (*X Factor, Blood Brothers, Kinky Boots*) returns, but this time...she's WICKED! They join **Evie Pickerill** (*CBeebies*) as Snow White, **Tam Ryan** as Muddles & **Ian Adams** as Nanny Nolly.

Join us as we look in the mirror, defeat the Evil Queen and follow Snow White & the prince on their journey to find true love's kiss in this ultimate fairy-tale family adventure.

Take a bite of panto delight with spectacular scenery and costumes, magical special effects, wicked humour and plenty of audience participation! **SNOW WHITE** promises to be a festive spectacular for all ages.

TICKETS FROM
£16.50*

GOLD SHOWS

Group Discounts:

Parties of 50+: £2.50 off all ticket prices (excluding gold seats)

PURPLE SHOWS

Group Discounts:

Parties of 50+: £6 off all ticket prices
Parties of 100+: £7 off all ticket prices

RED SHOWS

General Concessions:

£6 off all ticket prices

Family Ticket:

4 tickets £94* (to include a minimum of 1 adult and 1 child)

Valid on all red performances from 2 - 15 Dec

Group Discounts:

Parties of 20+: £6 off all ticket prices
Parties of 50+: £7 off all ticket prices
Parties of 100+: £8 off all ticket prices

School Parties:

As Group Discounts plus 1 free supervising adult for every 10 students

GREEN SHOWS

General Concessions:

£5.50 off all tickets

Group Discounts:

Parties of 10+: £7.50 off all tickets

School Parties:

Dec: £13* plus 1 free supervising adult for every 10 students

FRIENDS OF THE GRAND

15% off all ticket prices at all performances on Sat 02, Sun 03, Tue 05, Wed 06, Thu 07, Fri 08, Tue 12, Wed 13, Thu 14 Dec 2023.

FIRST CALL

£40* for First Call member and accompanying adult on Sat 02, Sun 03, Tue 05, Wed 06, Thu 07, Fri 08, Tue 12, Wed 13, Thu 14 Dec 2023. Excludes gold seats.

PERFORMANCE TIMES & PRICES

SAT	02 nd DEC 2023	2.30pm	7pm
SUN	03 rd DEC 2023	1pm	5pm
MON	04 th DEC 2023	NO PERFORMANCES	
TUE	05 th DEC 2023	10.30am	2.30pm
WED	06 th DEC 2023	2.30pm	7pm
THU	07 th DEC 2023	2.30pm	7pm
FRI	08 th DEC 2023	11am	6pm
SAT	09 th DEC 2023	2.30pm	7pm
SUN	10 th DEC 2023	1pm	5pm
MON	11 th DEC 2023	NO PERFORMANCES	
TUE	12 th DEC 2023	2.30pm	7pm
WED	13 th DEC 2023	2.30pm	7pm
THU	14 th DEC 2023	2.30pm	7pm
FRI	15 th DEC 2023	11am	6pm
SAT	16 th DEC 2023	11am	5pm
SUN	17 th DEC 2023	11am	3pm
MON	18 th DEC 2023	NO PERFORMANCES	
TUE	19 th DEC 2023	2.30pm	7pm
WED	20 th DEC 2023	2.30pm	7pm
THU	21 st DEC 2023	2.30pm	7pm
FRI	22 nd DEC 2023	2.30pm	7pm
SAT	23 rd DEC 2023	2.30pm	7pm
SUN	24 th DEC 2023	11am	3pm
MON	25 th DEC 2023	NO PERFORMANCES	
TUE	26 th DEC 2023	1pm	5pm
WED	27 th DEC 2023	1pm	5pm
THU	28 th DEC 2023	2.30pm	7pm
FRI	29 th DEC 2023	2.30pm	7pm
SAT	30 th DEC 2023	1pm	5pm
SUN	31 st DEC 2023	11am	3pm
MON	01 st JAN 2024	NO PERFORMANCES	
TUE	02 nd JAN 2024	NO PERFORMANCES	
WED	03 rd JAN 2024	2.30pm	7pm
THU	04 th JAN 2024	2.30pm	7pm
FRI	05 th JAN 2024	2.30pm	7pm
SAT	06 th JAN 2024	1pm	5pm
SUN	07 th JAN 2024	11am	2.30pm



BRITISH SIGN LANGUAGE INTERPRETED PERFORMANCES

Thu 14 Dec at 2.30pm & 7pm and Sat 6 Jan at 1pm



AUDIO DESCRIBED PERFORMANCES

Thu 7 Dec at 2.30pm, Thu 14 Dec at 2.30pm and Sat 6 Jan at 1pm



CAPTIONED PERFORMANCES

Wed 20 Dec at 7pm



RELAXED PERFORMANCES

Fri 15 Dec at 11am and Sat 16 Dec at 11am

GYASI SHEPPY

A right royal Wolverhampton welcome to the new prince in town!

In recent years, *CBeebies* presenters have proven a popular addition to the Wolverhampton panto line up, with Mr Bloom taking a role a few years ago and Ben Cajee playing the title role of *Aladdin* last year. This year's spectacular new pantomime at Wolverhampton Grand sees the return of *CBeebies* favourite Evie Pickerill, who will play Snow White having played *Cinderella* in 2021 and this year, she is joined by another popular presenter, Gyasi Sheppy who will play the prince!

Gyasi has always loved the theatre and explains; "being from Northern Ireland, my youngest memories of theatre are panto and going to see May McFettridge in the Grand Opera House pantomime. I always said that I would get on that stage in Belfast one day and last year I did! I loved performing in panto and I'm delighted to do it all again this year in Wolverhampton!"

On performing alongside his *CBeebies* co-star, Gyasi said; "It's going to be a really special year because I get to perform alongside my *CBeebies* friend Evie! I'm very excited to get started! Last year I played the comedic character so it's nice to go back to being the handsome one..." He laughs and adds; "CBeebies is special for many reasons, and we're able to connect with thousands of children all over the country through the TV screen. We obviously film that in a TV studio with a few camera operators and that's it. But then when we do panto in a theatre, making live magic is incredible because you can see them reacting, you can hear the gasps and that's the magic – that's the reason we do it! I don't do it for ego, nor the money, I do it for the kids, it's so special. These are the kids who might be on the stage in the future too! Seeing panto definitely lit a fire within me and made me realise that I wanted to do this as a career. If we as a cast can inspire the next generation to get on stage then job done! I also think it's great when a panto has returning cast members that the kids can grow up with... I always had that at home in Belfast growing up and I know Wolverhampton has that with Tam Ryan and Ian Adams, panto here is very special so it's honour to be asked into that family!"

Gyasi was always performing, even from an early age. "I was that kid in school who sang all of the S Club songs in the playground, we'd make pop bands and perform the songs everywhere we could. Then I joined the local am dram in Lisburn in Northern Ireland, signed up to every performing arts group I could find and did a performing arts diploma over there, I didn't come to London, I look back and think it was a very different route to most but I got there and two years ago got the big break, presenting on *CBeebies* from being found on YouTube. To be part of *CBeebies* is very special, people feel like they own it, it's Britain's brand, and it's beyond everything I could have ever imagined."

"I'm really proud that my journey has lead me here and I know that Wolverhampton loves *CBeebies*, having had Evie in *Cinderella*, Ben in *Aladdin* last year and now both me and Evie this year! I can't wait to see everybody so make sure you've got your tickets!"

Gyasi stars in **SNOW WHITE** alongside **Evie Pickerill, Kelle Bryan, Niki Colwell Evans, Tam Ryan and Ian Adams** from 2 December. Tickets are on sale now at grandtheatre.co.uk

NIKI COLWELL EVANS

She's back and this time... she's wicked!

NIKI COLWELL EVANS is making a welcome return to the Grand Theatre pantomime this winter but for Niki, whenever she's here it's Christmas all year round!

Niki made her pantomime debut at the Grand Theatre in the 2009 production of *Cinderella* alongside Stefan Dennis and The Krankies, she returned for the 2011 production of *Snow White* with Sam Kane and Linda Lusardi, followed by 2012's *Jack And The Beanstalk* with Sherrie Hewson and 2014's *Cinderella* with Julian Clary. Having played the fairy in all of those, she's turned to the dark side, revelling in the opportunity to let out her inner diva as the villainous Queen Dragonella!

"I'm really excited to be back at the Grand this year. Panto at this theatre is really sentimental to me because it gave me some magical Christmases even at a time when the boys left home. The memories I've got at the Grand are so special and I made so many friends during those Christmastimes - a lot of whom are still working at the theatre now. Whenever I've done other jobs at Christmas, it's never been as exciting or magical so to be back in my homeland will be wonderful."

"Coming back to the theatre

for my photoshoot and costume fittings has been lovely because the staff all wave at me and say "ow am ya Niki" and it's like a big, warm hug. It's the homeliest place to do panto and as I've done four of them before, I think of the Grand as a Christmassy place so even if I come back in the middle of summer I feel like it's Christmas!"

"I come to the Grand to see shows all the time. It's my go to theatre if I want to see a show, usually I've got friends in the shows that tour so I try and see them if I'm free when their shows come to town. In the last couple of months I've been to see friends in *The Bodyguard* and *Sister Act* at the Grand – it's such a great theatre to watch productions in because it's so beautiful, comfortable and you can see the stage from all the seats."

"I've got too many memories of the Grand to recall in this magazine but some that stand out are working with Stefan Dennis and The Krankies in my first panto, the wonderful friends I've made in Sam Kane and Linda Lusardi when I did *Snow White* last time, the Grumbleweeds, Graham is very close to my heart. It's was always a real honour and a privilege to perform here and now to be asked back for a pantomime the theatre is producing itself is so special because Adrian, as Artistic Director, will phone with updates and to ask me things and it's so exciting to be part of the process of seeing it all unfolding. I've seen the set design, it looks absolutely incredible – it's crazy to think that's actually going to be built, just wait until you see it, it's stunning. The artistry involved in this is so different to anything I've ever been involved in. The creativity is unbelievable. The team behind this are so excited and so talented and it makes you as a performer be at your best, you want to be your best because everyone is at the top of their game. It's a completely different vibe to anything I've ever been a part of! I'm so looking forward to it and for the first time ever Wolverhampton, you get to see my evil side so book your tickets because believe me, you won't want to upset Queen Dragonella!"



MAKING

MAGICAL

MOMENTS WITH FIRST CALL

First Call is the perfect way for you and your child to visit Wolverhampton Grand Theatre.

With our FREE membership, you can enjoy the biggest and best shows together with our special First Call member rates.

If you both love theatre and want to see more of it together then join First Call today. First call membership is open to all theatregoers aged 8-15.



Two tickets for **£40***
Save up to £22



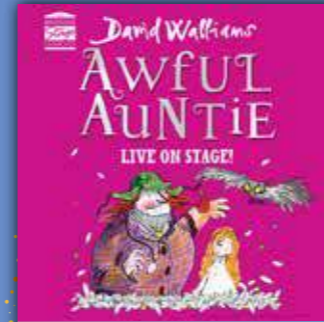
Two tickets for **£49***
Save up to £39.50



Two tickets for **£49***
Save up to £29



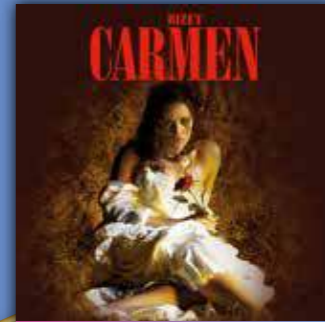
Two tickets for **£35***
Save up to £15



Two tickets for **£25***
Save up to £12



Two tickets for **£50***
Save up to £5



Two tickets for **£50***
Save up to £25



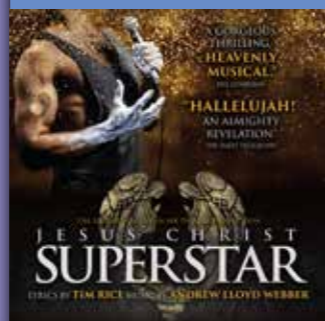
Two tickets for **£50***
Save up to £25



Two tickets for **£50***
Save up to £8



Two tickets for **£30***
Save up to £18



Two tickets for **£49***
Save up to £30



Two tickets for **£40***
Save up to £19



Two tickets for **£30***
Save up to £19.50



Two tickets for **£49***
Save up to £21



Two tickets for **£30***
Save up to £20



Two tickets for **£50***
Save up to £5



Two tickets for **£49***
Save up to £26



Two tickets for **£29***
Save up to £11



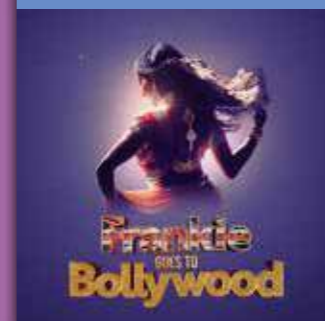
Two tickets for **£49***
Save up to £21



Two tickets for **£50***
Save up to £20



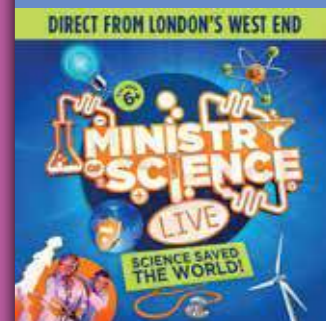
Two tickets for **£50***
Save up to £16



Two tickets for **£50***
Save up to £14



Two tickets for **£49***
Save up to £6



Two tickets for **£32***
Save up to £4



Two tickets for **£75***
Save up to £25



Two tickets for **£39***
Save up to £41



Two tickets for **£50***
Save up to £35

For full details of all the features and benefits that First Call members enjoy visit

grandtheatre.co.uk/memberships

Sarah Millican: Late Bloomer

Wednesday 10 -
Saturday 13 January '24

Evenings at 8pm

When **Sarah Millican** was a bairn, she wouldn't say boo to a goose. Quiet at school, not many friends, no boobs til she was 16.

Now? NOW she is loud, with good friends, a cracking rack and goose boeing all over the shop.

In **LATE BLOOMER**, Sarah's brand-new stand-up show, she explores how one became the other.

Plus, lots of stuff about dinners and lady gardens. Come along, laugh at her, with her, beside her.



Tickets £34.25*

Age Guidance: 16+ Likely to be swearing and adult content

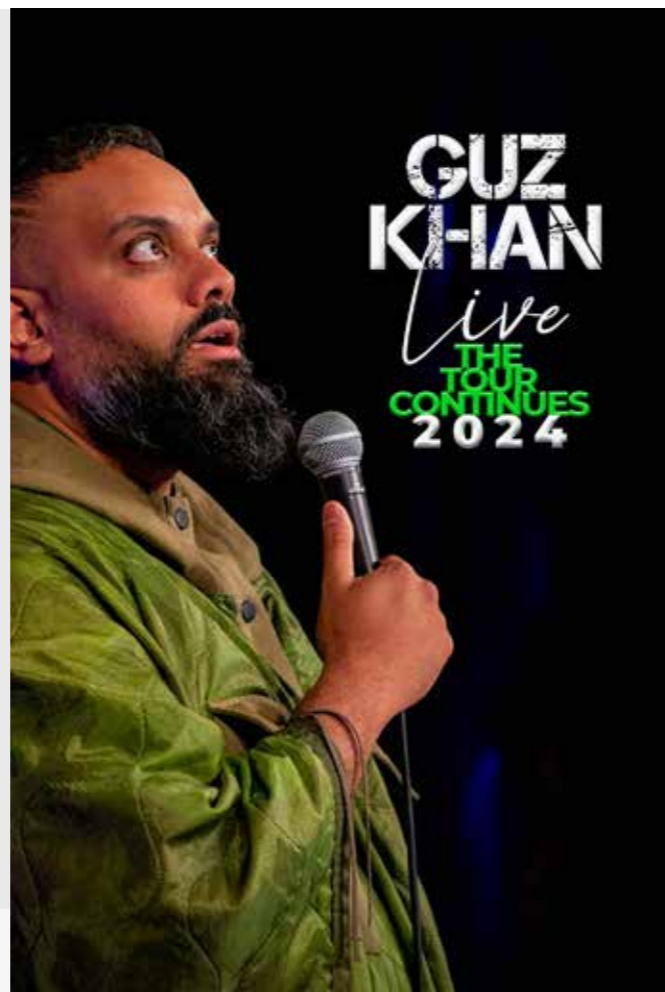
Guz Khan: Live

Thursday 18 January '24 - 7.30pm

By popular demand, **GUZ KHAN** adds more opportunities for you to see him on his kick-ass comedy tour! This loveable, funny guy is known for bringing his big-screen persona and BAFTA-nominated hilarity to the stand-up stage. **GUZ KHAN LIVE!**

"As a stand-up, Khan is very much a star. Make no mistake." – Bruce Dessau (*The Evening Standard*)

Guz is the creator and star of BBC's *Man Like Mobein*, alongside his appearances on *Taskmaster* (Channel 4), *The Last Leg* (Channel 4), *Live at the Apollo* (BBC), *Would I Lie To You* (BBC), *QI* (BBC), *Four Weddings and A Funeral* (Hulu), & movies *Army of Thieves* and *The Bubble* (Netflix), *How To Date Billy Walsh* (Amazon) and much more.



Tickets from £21.75*

Age Guidance: 16+ Likely to be swearing and adult content



Stranger Sings!

Monday 15 - Wednesday 17 January '24

Evenings at 7.30pm

Tune in, children of the '80s! Join us in the upside-down for this award-winning, smash hit new parody musical; **STRANGER SINGS!**

Straight from off-Broadway, to a UK premiere 3-month sell-out run in London, comes the UK nationwide Theatre Tour of **STRANGER SINGS!** This award-winning sci-fi spoof is a wild, irreverent twist on the hit *Netflix* series – in all its hair-raising, blockbuster glory.

Take a trip with your favourite gang on a night of indulgent pop culture references, heavy synth, poor parenting, dancing demogorgons and maybe – just maybe – you might find justice for Barb along the way.

Let the incredible original writing of **Jonathan Hogue** subvert the genre with this fearless parody, where there are too many mullets, a generous helping of fairy lights, and the '80s finally embraces feminism.

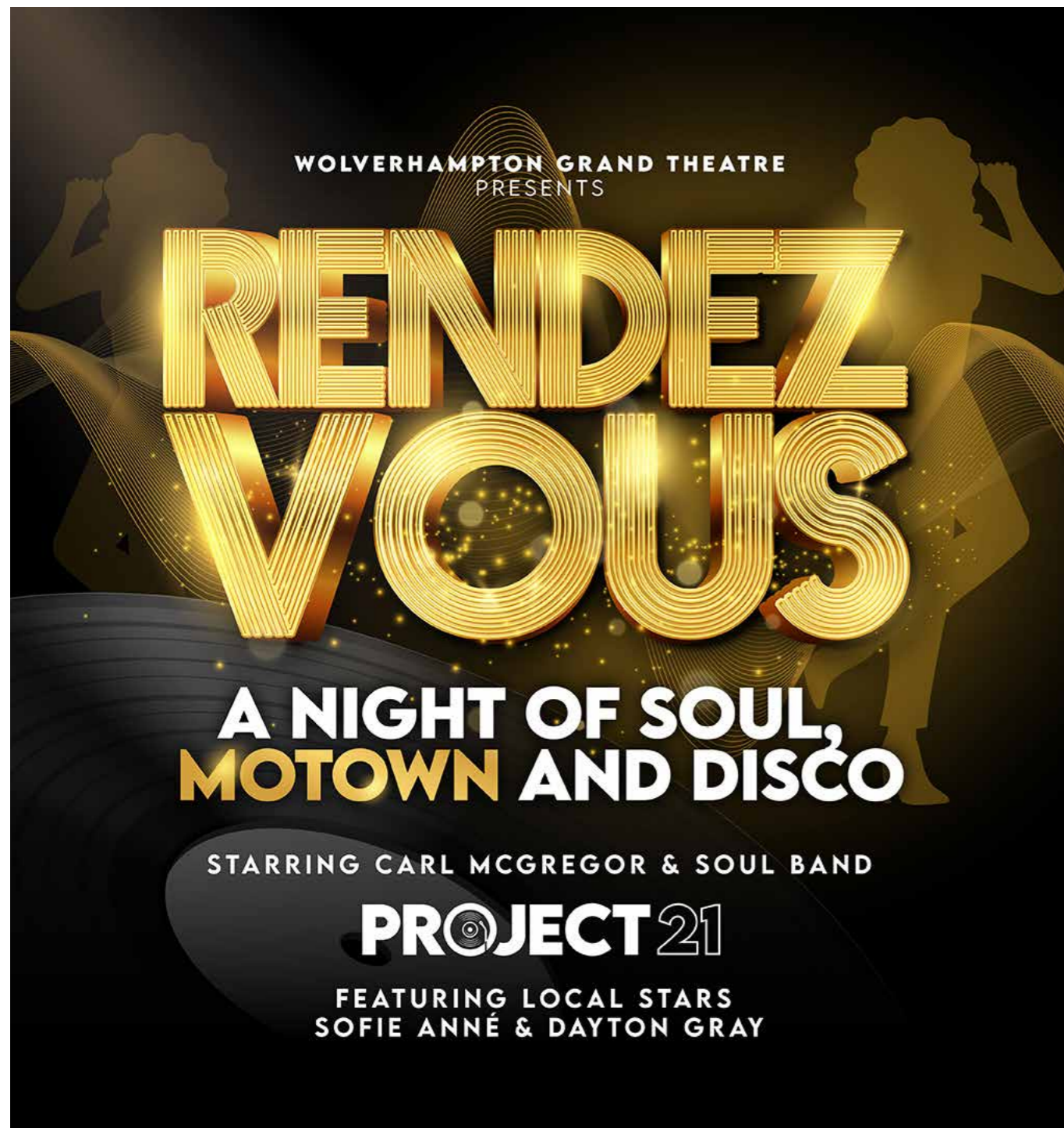
So, hop(per) on your bike and grab your transmitter radio (don't forget your inhaler); because saving your friends is the answer to this never ending story.

No mouthbreathers allowed.



Tickets from £17.50*

Age Guidance: 14+



Rendezvous

Saturday 20 January '24 - 7.30pm

Wolverhampton Grand Theatre presents **RENDEZVOUS!**
The ultimate night of Soul, Motown and Disco!

The vibrant live music spectacular **RENDEZVOUS** stars **Carl McGregor** and his Soul Band **PROJECT 21** featuring local artists **Sofie Anné** and **Dayton Gray** and celebrates the music of *Aretha Franklin*, *Stevie Wonder*, *Earth, Wind & Fire*, *Chic* and many more!

Carl McGregor has been a professional musician for forty years. In that time he has worked with a wide variety of artistes such as, *Sir Cliff Richard*, *Roy Castle*, *Yaz*, *Charlie Peacock*, and soul diva *Beverley Knight*. Carl formed the band **PROJECT 21** in 1998 which included several fellow session musicians who perform with *Beverley Knight*, *Westlife*, *Corinne Bailey Rae* & *The Jacksons* and now they're front and centre in their own hometown!

Expect to hear many hits that define Soul, Motown and Disco in one unmissable night at the Grand! It's time to get down and funky!

Tickets from £25*

Fastlove

Friday 19 January '24 - 7.30pm

Direct from London's West End, this is the world's favourite *George Michael* celebration!

Few shows have reached the dizzy heights of **FASTLOVE**, now touring in 18 countries, selling over 250,000 tickets worldwide. Join us for one very special night as we celebrate the late great *George Michael*.

This show has it all, the power, emotion and star quality in this stunning production with full video and light show, as we respectfully recreate the soundtrack to your life.

Playing all the hits, from *Wham!* right through his glittering career, including, *Wake Me Up*, *Too Funky*, *Father Figure*, *Freedom*, *Faith*, *Knew You Were Waiting*, *Careless Whisper* and many more.

FASTLOVE: for the fans.

Tickets from £18.50*



The Best Of Frankie Valli And The Four Seasons

Sunday 21 January '24 - 7.30pm

THE BEST OF FRANKIE VALLI AND THE FOUR SEASONS is a spectacular high-pitched celebration of timeless music from one of the biggest selling groups of all time. This nostalgic musical journey pays tribute to the life and career of those four boys from Jersey, who started singing under a streetlamp but soon went on to become one of the most recognised groups in history.

From the streets of New Jersey to the dizzying heights of the West End and Broadway, this incredible music has delighted audiences for over five decades. **THE BEST OF FRANKIE VALLI AND THE FOUR SEASONS** features all your favourite songs including *Sherry*, *My Eyes Adored You*, *Big Girls Don't Cry*, *Can't Take My Eyes Off You*, *Walk Like A Man*, and many more.

Gareth Gates joins cast members from the smash-hit Tony award winning musical *Jersey Boys* and other hit West End shows. **THE BEST OF FRANKIE VALLI AND THE FOUR SEASONS** is guaranteed to leave you saying Oh, *What A Night!*

Tickets from £16*



Stewart Lee: Basic Lee

Sunday 28 January '24 - 7.30pm

Returning to Wolverhampton Grand Theatre after selling out in 2023!

After a decade of ground-breaking high concept shows involving overarched interlinked narratives, massive sets and enormous comedy props, Lee enters the post-pandemic era in streamlined solo stand-up mode.

One man, one microphone, and one microphone in the wings in case the one on stage breaks. Pure. Simple. Classic. Basic Lee.

★★★★ 'Basically, Basic Lee is better than most' (*The Telegraph*)

★★★★ 'Basically, Basic Lee is very funny' (*The Times*)

★★★★★ 'Basically, back-to-basics Basic Lee is anything but' (*Mail on Sunday*)

'It's brilliantly choreographed, razor-sharp and laugh-aloud hilarious, but anything but basic' (*Louder than War*)

Tickets £28*

Age Guidance: 14+ Likely to be swearing and adult content



Queenz - The Show With Balls

Friday 2 February '24 - 7.30pm

Direct from their smash-hit run in London's West End, these dazzling divas deliver a night of fun and fabulousness as they dance like *Britney* and sing like *Whitney!*

Get ready for jaw dropping LIVE vocals and a set list full of pop party anthems, including, *Queen Of The Night, Born This Way, Raining Men, I Will Survive, I Wanna Dance With Somebody*, Musical Mashups and so much more! You'll be feeling fierce and fabulous before you know it!

'Joyful optimism that's been sorely missing from our worlds for too long now' - *Metro*

'Right up my straza' - *Dawn French*

'Beautiful, Fun & Vital' - *The Scotsman* ★★★★★



Tickets from £18.50*



Supreme Queen

Saturday 3 February '24 - 7.30pm

Surely one of the most recognisable tribute bands in the world, the incomparable **SUPREME QUEEN** pay homage to the halcyon days of one of the greatest ever rock bands.

Musically brilliant, **Scott Maley's** incredible vocal and visual resemblance to *Freddie Mercury* is complimented by stunning production values, authentic stage settings, as well as sound and lighting effects all designed to provide the most memorable of evenings for the millions of *Queen* fans worldwide!



Tickets from £12.50*



Cirque Du Hilarious: Temple Of Delusion

Sunday 18 February '24 - 3pm

The stars of *CBBC's* number one show *Danny and Mick* are embarking on a new adventure and theatre tour for 2024.

In a faraway land that time forgot, the ancient treasures, mysteries and magic of an old and forgotten civilisation lay in hiding for only the brave (and the mistaken) to find...!

And so it is that our hapless heroes set off on another adventure full of mistakes, pitfalls and danger! Guaranteed fun and thrills for all the family from 4 to 104! Book early to avoid disappointment.



Tickets from £14.50*



LOVE YOUR BATHROOM



30% OFF
brochure
prices



Pick up a copy
in store



Discover inspirational ideas to transform your bathroom, with the latest collections.
Full Design and Installation Service available.



OPEN TO
TRADE
& RETAIL



Little Lane, Wolverhampton, WV1 1JY
Tel: 01902 577090 www.carvers.co.uk

RETURNING TO WOLVERHAMPTON DUE TO HUGE DEMAND!



THE TIMES FINANCIAL TIMES THE INDEPENDENT TIME OUT DAILY EXPRESS THE STAGE WHATSONSTAGE LONDON THEATRE ATTITUDE

EVERYBODY'S TALKING ABOUT
JAMIE
THE HIT MUSICAL FOR TODAY

'PUNCHY, FUNNY, FABULOUS'

TIME OUT



IVANO TURCO



JOHN PARTRIDGE



GIOVANNA FLETCHER



SHOBNA GULATI



REBECCA MCKINNIS

Everybody's Talking About Jamie

Tuesday 23 - Saturday 27 January '24

Evenings at 7.30pm,

Wednesday & Saturday matinees at 2.30pm

WINNER! – Best New Musical, What's On Stage Awards, London

Following a record-breaking three-year West End residency, sold-out UK & Ireland Tour and Amazon studios award-winning film, the smash-hit and critically acclaimed musical **EVERYBODY'S TALKING ABOUT JAMIE** returns to Wolverhampton Grand.

Jamie New is sixteen and lives on a council estate in Sheffield. Jamie doesn't quite fit in. Jamie is terrified about the future. Jamie is going to be a sensation. Supported by his brilliant loving mum and surrounded by his friends, Jamie overcomes prejudice, beats the bullies and steps out of the darkness, into the spotlight. This 'Funny, outrageous, touching' (*Daily Telegraph*), musical sensation is to be experienced by all the family and not to be missed!

Funny, fabulous and feel good, **EVERYBODY'S TALKING ABOUT JAMIE** features an all-star cast including West End sensation **Ivano Turco** as Jamie, Queen of the Jungle **Giovanna Fletcher** as Miss Hedge, *EastEnders* legend **John Partridge** as Hugo/Loco Chanelle, *Coronation Street's* **Shobna Gulati** as Ray, musical theatre star **Rebecca McKinnis** as Margaret and **EVERYBODY'S TALKING ABOUT JAMIE** veteran **Talia Palamathanan** as Pritti.

Set to an original score of catchy pop tunes that will 'blow the roof off the Theatre' (*Mail on Sunday*) by lead singer-songwriter of *The Feeling*, **Dan Gillespie Sells** and writer **Tom MacRae** (*Doctor Who*). Choreographed by Sadler's Wells Associate Artist **Kate Prince** (*Into The Hoods, Some Like It Hip Hop, SYLVIA, Message In A Bottle*). This 'sparkling coming-of-age musical' (*The Times*) will have everybody talking about Jamie for years to come.

Sixteen: the edge of possibility. Time to make your dreams come true.



BSL Interpreted



Audio Described

Tickets from £15.50*

Information is correct as of September 2023

*A £4 booking fee applies to all purchases. Book online at grandtheatre.co.uk

Shobna

Gulati

returns with the show
EVERYBODY'S talking about!

Taking a quick break from rehearsals for what will be her sixth year with **Jamie**, **Shobna Gulati** sits down with **Scott Bird** to discuss taking the show from the West End, around the world and back to Wolverhampton, appearing in the movie version and putting her stamp on a character everybody wishes they knew in real life... **Ray**.

"Ray is everyone's auntie. She is specifically Jamie's auntie as his mum's best friend. She is a feelgood character who says it like it is. She's definitely not afraid... therefore, playing her is a lot of fun but it's also a lot of pressure. You have to bring light and shade to the role. She has a lot of heart with some poignant moments but can also get some big laughs if you play it right."

Shobna's portrayal of Ray can also be seen in the movie version of the musical, which premiered on Amazon Prime in 2021.

"It meant the world to me to play to Ray in the movie version and commit that character to film. I really tried to make her my own and bring my experience to her on stage and the beauty of doing such a new musical is that the role was up for reinvention. For that to then be committed to celluloid it's quite an honour."

"It's an honour too, to be part of this story in so many ways. It's very special to a lot of people because it is so inclusive and representative. We create a space that isn't divisive and we can understand each other's humanity. This show is not about Jamie wanting to wear a dress. It's about Jamie understanding who he is and how he fits. We're all searching for that place where we belong, we all want to belong and some members of society don't want that. It's easier to spread hate than it is love. The world is so isolated and so separated, intentionally so, I think, by whoever desires it to be that way and to be part of this show brings me such joy because the work we do brings joy to so many."

Shortly after playing Wolverhampton with the show in 2021, Shobna was part of *Jamie's* US premiere in Los Angeles and reflects on the show's global appeal beyond its homeland.

"It was amazing to take the show to California - even more so to take a little bit of British culture to America where they were absolutely flabbergasted that in the show I ate crisps, or as they say potato chips, in between two slices of buttered bread! They were shocked. The

Americans felt proud to understand the Sheffield dialect and British cultural values - they tried very hard to understand the crisp sandwich - but importantly it was how much they accepted the show and how they embraced it that was just joyous."

"Closer to home again, I can't wait to be back at Wolverhampton Grand. I've been there more times than I can count and must hold the record for doing the longest pantomime run in existence there... seventeen weeks! I have so many fond memories of the Grand, it is a grand theatre and it's one of the nicest theatres to play. The sound and the acoustics are great, that auditorium is built to show off a show but also to make the audience feel like they're on stage with us, we're all part of it together. That's very much a feeling I get as a performer but also as a member of the audience at the Grand. It's one of those very special theatres that when you tour, it makes you remember what theatre means to a town or city and what it gives to a community. There are a lot of theatres now that are as old as the Grand that aren't here anymore. I think of Oldham where I was born and the Coliseum Theatre that we lost this year, to lose that history and legacy is such a shame. The onus is as much on the touring shows as it is on the theatres themselves to programme for new audiences and evolving audiences with fresh thoughts on theatre and I see what Wolverhampton Grand is doing by preserving that history and legacy but also thinking about the future and programming for its community."

"So I'm very much looking forward to returning to Wolverhampton and this time with some new cast members. Ivano Turco who plays Jamie is a dreamboat, I can't even begin to tell you... there have been many Jamies, he has big shoes to fill and he fills them so beautifully as every Jamie has. During my time with the show, I've been so privileged to see so many of them bring their own beautiful selves to this role and Ivano has done exactly that, that's the kind of magic that makes this show so special. People often talk to me about touring and travelling and how tough it can be, but to be on the road with this company, the cast, crew and band, to be telling this story in beautiful theatres such as Wolverhampton Grand again and again is just pure joy."



Creative LEARNING

As well as having an extensive offering for schools and community groups, we also have a number of ways the general public can engage with our Creative Learning department, from Theatre Tours, to Post Show Q&A's and more!

THEATRE TOURS

Over the last five years our theatre tours have significantly grown in popularity.

The theatre tours are a fantastic opportunity for you to visit our famous stage and to see the theatre from a performers perspective, whilst learning about all aspects of the theatre industry.

During the tour you will hear about some of the theatre's history, what goes into putting a show on as well as anecdotes and some spooky goings on!

You will visit the front of house areas, stage, backstage areas and a dressing room (subject to availability).

For public tour availability please refer to our website.

To book a private tour for a group of 8 or more please email JamesC@grandtheatre.co.uk

Tours take approximately 90 minutes. Feedback from the tours speaks for itself!

"I would like to commend you and your colleagues for a wonderful tour we enjoyed with the Men's Cannock & District Probus Group. It was very interesting and enjoyed by all. Despite being in a powered wheelchair, I didn't feel left out of anything and was able to access all the areas."

"Everyone was impressed with the knowledge and enthusiasm of the tour guides and we would be happy to recommend it to friends, though my friend was sad not to 'see' the ghost but I guess you can't organise everything!"

POST SHOW Q&A'S

Over the last few years our Post Show Q&A's have become increasingly more popular with over 400 audience members attending in some cases. Q&A's generally take place on Thursday evenings and give our audience members a fantastic opportunity to discover more about the production and to ask performers any burning questions they may have.

We have been joined by many stars of stage and screen during our Q&A's including Ian McKellen, Alexandra Burke, Samantha Womack, Danny John-Jules and Phil Daniels.

A member of our audience who came to see *Strictly Ballroom The Musical*. had the following praise:

"I attended the show with my 14-year-old daughter. We do not live locally, and it was our first visit to your beautiful theatre. The show was amazing, and we especially enjoyed the Q&A session. It was wonderful to hear the stories from the cast and the experience certainly topped off a magical and memorable night."

Available Q&A's will appear on our website on the information section of each production.

NATIONAL THEATRE COLLECTIONS

In May and as part of our partnership with The National Theatre, we began screening some of their best loved titles at Wolverhampton Central Library.

Our first screening was *One Man, Two Guvnors* starring James Corden, it was a huge success, which resulted in the following screening, *Small Island*, selling out almost instantly!

Screenings are delivered via Drama Online, a Bloomsbury Digital Resources platform available to university, schools, and public libraries.

This screening is available for anyone who is a member of City of Wolverhampton Council Libraries, if you are not a member, don't worry, you can join on the day of the screening or when booking your place.

Each Screening takes place once a month with future screenings including *Barber Shop Chronicles*, *Frankenstein*, and *Peter Pan*.



GRAND READERS' BOOK CLUB

Our monthly Saturday Book Club explores a wealth of texts linked to shows from the Grand Theatre stage. From classics like *Oliver Twist*, to celebrity novels by panto stars, our book club enjoys discussing characters, plots and favourite extracts over coffee and cake in our friendly, relaxed environment. Grand Readers meet monthly on Saturdays at 11am – 12.30pm (unless stated otherwise).

Occasionally we are joined by a celebrity author who pops in to talk about their book. Past guests include Derren Brown, The Chuckle Brothers, Julian Clary, Debbie McGee, Su Pollard and Lisa Riley.

"This is no ordinary book club, it's a wonderful immersive experience! What an opportunity to read, discuss and debate a book which you wouldn't always automatically choose to read over a cuppa and a cake, occasionally with a special guest - an actor in the play or author. Then we see the book come to life with a unique chance to watch the theatre production. They do say a book isn't just a book, it's an event and this is exactly what Book Club is!"

For more information on any of the above, please contact JamesC@grandtheatre.co.uk



The Rocky Horror Show

Tuesday 6 - Saturday 10 February '24

Tuesday & Wednesday at 8pm,
Thursday - Saturday at 5.30pm & 8.30pm

Ready to thrill you with fun and naughty moments, **Richard O'Brien's** legendary rock 'n' roll musical, **THE ROCKY HORROR SHOW** comes to Wolverhampton Grand as part of its sell-out tour, having been seen by over 30 million theatregoers.

THE ROCKY HORROR SHOW is the story of two squeaky clean college kids – Brad and his fiancée Janet. When by a twist of fate, their car breaks down outside a creepy mansion whilst on their way to visit their former college professor, they meet the charismatic Dr Frank'n'Furter. It is an adventure they'll never forget, filled with fun, frolics, frocks, and frivolity.

Directed by **Christopher Luscombe**, **THE ROCKY HORROR SHOW** is the biggest party and features timeless classics, including *Sweet Transvestite*, *Damn it Janet*, and of course, the pelvic thrusting show stopping *Time Warp*.

★★★★★ (*The Telegraph*)

'Fierce and fabulous fun!' (*Daily Express*)

'Still the sexiest & funniest show in town' (*Evening Standard*)



**Tickets
from £16***

Age Guidance: 14+

GO WILD!
A DAY OF DISCOVERY

OPEN EVERY DAY FROM 10AM

DUDLEY ZOO & CASTLE

www.dudleyzoo.org.uk

DIRECT FROM
LONDON'S WEST END

2:22

A GHOST STORY

The Hit Play By
DANNY ROBINS

Directed by
MATTHEW DUNSTER
& ISABEL MARR

'A MODERN CLASSIC'

SUNDAY TIMES

2:22 A Ghost Story

Tuesday 20 - Saturday 24 February '24

Evenings at 7.30pm,
Wednesday & Saturday matinees at 2.30pm

The stage phenomenon that has taken the West End by storm now comes to Wolverhampton!

Winner of Best New Play at the WhatsOnStage Awards, this edge-of-your-seat, supernatural thriller is written by **Danny Robins**, creator of the hit BBC podcasts *Uncanny* and *The Battersea Poltergeist*, and comes fresh from record-breaking seasons at five

West End theatres with a host of acclaimed star performances (including among others Lily Allen, Cheryl, Stephanie Beatriz, Tom Felton, Jake Wood and James Buckley). It's a brilliantly funny and adrenaline-filled night where secrets emerge and ghosts may or may not appear... What do you believe? And do you dare discover the truth?

"THERE'S SOMETHING IN OUR HOUSE. I HEAR IT EVERY NIGHT, AT THE SAME TIME"

Jenny believes her new home is haunted, but her husband Sam isn't having any of it. They argue with their first dinner guests, old friend Lauren and new partner Ben. Can the dead really walk again? Belief and scepticism clash, but something feels strange and frightening, and that something is getting closer, so they're going to stay up... until 2:22... and then they'll know.

Tickets from £15*
Age Guidance: 12+



BSL Interpreted



Audio Described



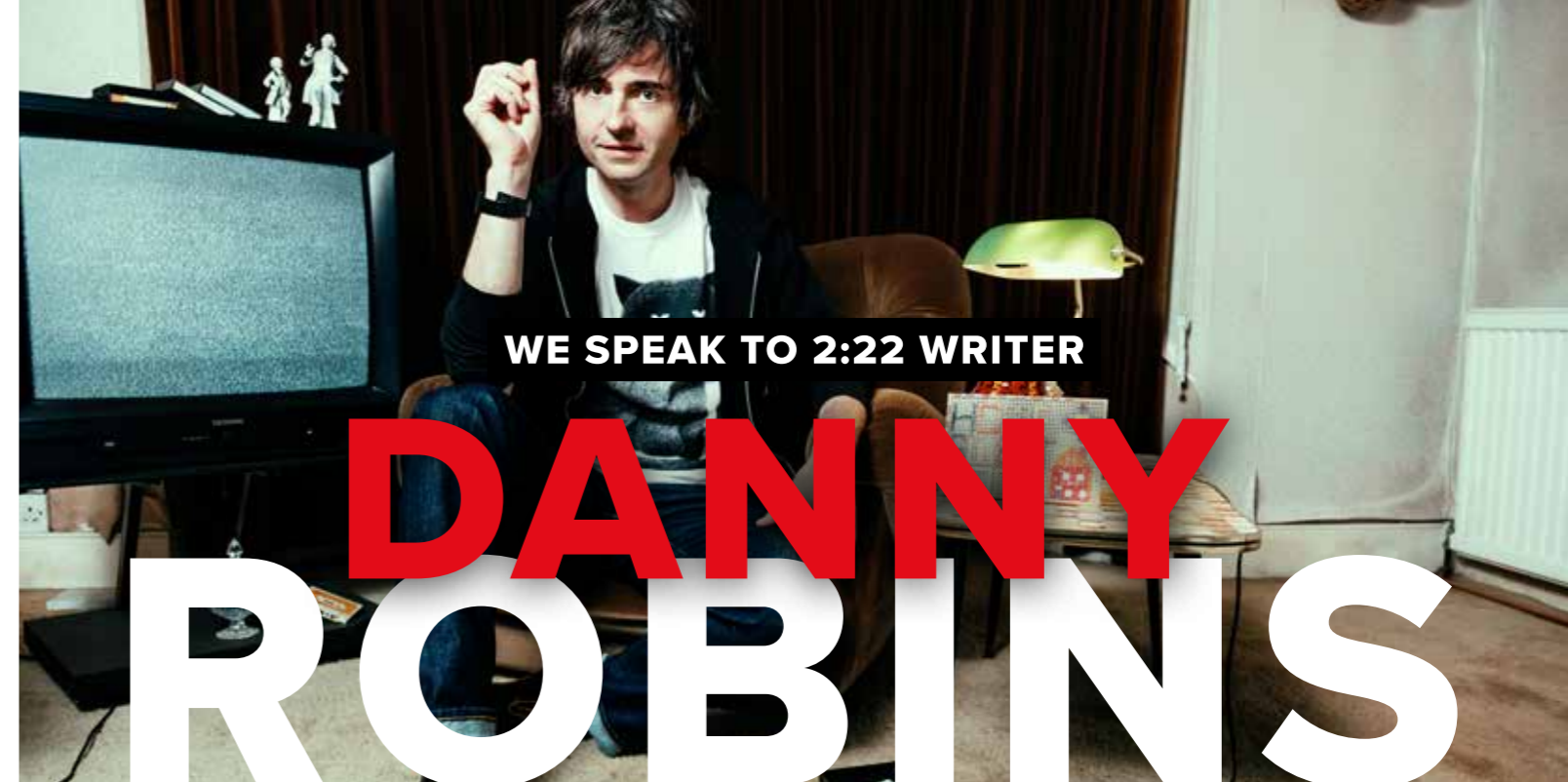
Captioned Performance



FRIENDS OF THE THEATRE



Family Ticket



WE SPEAK TO 2:22 WRITER

DANNY ROBINS

ON HIS SUPERNATURAL THRILLER

...and whether he believes in ghosts...

Can you tell us a bit about 2:22 A Ghost Story?

It's definitely best going into 2:22 knowing as little as possible about the production, but I can say that the story revolves around a married couple, Jenny and Sam who are redecorating their new home, and Jenny is convinced they're visited by a supernatural presence every day at 2:22am. The play takes place across one evening and seeks to fundamentally answer the question of whether ghosts exist. It's a jump-out-of-your-seat, spine-tingling psychological thriller, but also a great night out. Audiences yell, scream, laugh and cry - it's a good way to get to know your neighbour as well as you'll probably need an arm to grab hold of for support!

What were your inspirations for writing 2:22?

It was inspired by a friend of mine who said she'd seen a ghost. It really blew me away, because she's not the type of person I'd expect to have that kind of experience. I was immediately fascinated by the idea that different people would react to her in very different ways. Some people might believe her, some people might laugh at her, others would be annoyed by her - this whole range of possible opinions became the foundations of 2:22. I then thought, what if you distil that range of opinions into a couple, where one person believes there is a ghost in the house and the other person adamantly disagrees. What then happens to their relationship? On a more practical note, there are some uncanny parallels between my life and the setup of the play. I, too, was redecorating an old Victorian house with my partner that was once owned by an elderly woman, so you can see some mirroring there. Sadly, we weren't haunted by the supernatural!

Can you tell us about your writing process?

It's been a totally obsessive labour of love. I poured over every single word of this play for about five years. It was the research for 2:22 A GHOST STORY that led me to creating my podcasts *Battersea Poltergeist* and *Uncanny*. I speak to people who've had interactions with ghosts regularly, so I took some inspiration from there too. I was also inspired by the world we live in now. War in Europe, climate change, and Covid-19 is forcing us to consider our mortality. This inevitably makes you think about the big questions, with the biggest of all being, what happens to us after we die?

How involved have you been with the production? What's the working relationship like, between you as writer and all the creatives who bring the script to life?

I've been very closely involved in the production since its move from my laptop screen to a rehearsal room. It's a project that has been life-changing for me. People often tell me that they've gone to see it for a second time and had a totally different, yet equally enjoyable experience. What I find the most interesting is how a different cast changes the dynamics between characters immediately, and changes how the audience perceives each character. For example, the impact of Jenny not being believed is felt differently for a Jenny who doesn't have an RP accent or a Jenny who is from the global majority. This adds an additional nuance to her husband's inability to take her seriously or believe her.

Do you believe in ghosts? Have you had any supernatural experiences?

I always call myself a sceptic who wants to believe, but I'm not quite there yet. I've never had a supernatural experience, but I

'It'll make you laugh, it'll make you cry, it'll make you jump out of your seat - this is a really immersive night out.'

have a lifelong desire to have one, I still live in hope! It's quite a comforting idea to me that they exist, and I think someone should be able to say they've seen a ghost, and not be laughed at, or have their sanity questioned. I was brought up in an atheist household, but I craved some form of belief and I think I found that in ghosts.

Are you easily scared? What scares you?

I'm a massive coward - I'm scared of turbulence, blood tests, intimidating looking people in pubs!

Bizarrely, I'm absolutely not scared of ghosts, but I find it really easy to plug into the fear that I pick up from people which really helps to humanise the characters in the play.

What will audiences love most about the show?

It'll make you laugh, it'll make you cry, it'll make you jump out of your seat - this is a really immersive night out. Sometimes theatre can feel a little stuffy, audiences are asked to sit quietly and still, but this play gives you the license to gasp, scream, and yelp - it's almost interactive in that way! 2:22 is an adrenaline-fuelled experience that is both entertaining and thought-provoking. I'm sure that all families, couples, and friends who see the show will spend the rest of their evenings haunted with the possibilities of the supernatural!

GETTING SOCIAL

LAUNCHES, PRESS NIGHTS, EVENTS - A LOOK BACK AT OUR LATEST SEASON



Sandra Marvin and Lizzie Bea from Sister Act at St. Peter's Collegiate Church



BBC WM's Rakeem Omar interviews Shem Hamilton and Christian Alifoe from Sucker Punch



Elise Evans - host of the Ormiston Shelfield Speak Up film premiere



Fran and Bernard Richards at The Best Exotic Marigold Hotel press night



Niki Colwell Evans at the poster photoshoot for Snow White



Miss Sundi at Wolverhampton Pride



Marios Nicolaides and Marco Venturini at The Bodyguard press night



Ormiston Shelfield Speak Up film premiere



Gyasi Sheppy at the poster photoshoot for Snow White



Grand Theatre Memory Café 4th Birthday Party at The Mount Hotel



Regan Gascoigne at the Greatest Days press night



Rock Of Ages press night



Boxer and Poet Matt Windle at the Sucker Punch press night



Lesley Joseph at the Sister Act press night



Cameron Sharp at the Rock Of Ages press night



Divina De Campo at The SpongeBob Musical press night



Melody Thornton and Franklin at The Bodyguard press night



Scott Bird and Heidi Birtles at Wolverhampton Pride



Shem Hamilton at the Sucker Punch press night



Kelle Bryan at the poster photoshoot for Snow White



Reece Kerridge at The SpongeBob Musical press night



Kevin Kennedy at the Rock Of Ages press night



Ian Adams entertaining at the Grand Theatre Memory Café 4th Birthday Party at The Mount Hotel



Sister Act press night



Rock Of Ages press night



Tom Read Wilson at The SpongeBob Musical press night



Tonia Daley Campbell and Nathan Powell at the Sucker Punch press night



The Mayor of Wolverhampton at Wolverhampton Pride



Taylor Alman and Alexandra O'Reilly at the Greatest Days press night



The Best Exotic Marigold Hotel press night



The Cast of Sucker Punch 'in the ring' on stage ahead of opening night



Remy Lloyd wins the prestigious Dementia Hero Award for her work here, a proud Dementia friendly business



Sandra Marvin at the Sister Act press night



The cast of Sister Act at Wolverhampton Pride



The SpongeBob Musical press night

★★★★★
 'EXHILARATING ENTERTAINMENT FROM SIX KILLER QUEENS'

Daily Express

SIX



DIVORCED ★ BEHEADED ★ LIVE!

SIX

Tuesday 27 February - Sunday 3 March '24

Tuesday, Wednesday, Thursday & Saturday at 8pm,
 Friday 6pm & 8.30pm, Saturday 4pm, Sunday 2pm

The crowning glory of Broadway, the West End and beyond, the international smash hit musical **SIX** makes its royal return to Wolverhampton, following its previous sell-out success!

Tickets from £19*
 Age Guidance: 10+

Winner of the Tony Award for 'Best Original Score' and 'Best Costume Design', double winner of the WhatsOnStage Award for 'Best West End Show' and a Gold-Disk winning album, this sell-out Tudor take-off has 'an incredibly strong and powerful message' (*The Australian*) and is 'pure entertainment' (*New York Times*).

From Tudor Queens to Pop Princesses, the six wives of Henry VIII take to the mic to tell their tales, remixing five hundred years of historical heartbreak into an 80-minute celebration of 21st century girl power. These Queens may have green sleeves but their lipstick is rebellious red.

Think you know the rhyme, think again...

Divorced. Beheaded. LIVE!



by Royal appointment

*We speak to
 Wolverhampton's
 leading lady
 Nicole Lewis
 about her royal
 tour of the UK*

Q. What are your earliest memories of the Grand Theatre?

A. My earliest memory of the Grand Theatre is going to see a pantomime there. But performing with the Glee choir there will stick with me forever! So much so I will most likely cry on the first night.

Q. You performed in the Grand Theatre's Intro To Panto tour, visiting schools all over the area. How was that experience for you and how important is it that theatres play such a part in the community?

A. It was an amazing experience for me and unknowingly I did most of the tour whilst I was pregnant with my daughter, who is now two years old. Bringing theatre to children and people that may not get the opportunity to experience it, is really important to me

and I think that is why I was so eager to get involved. One of my first experiences with theatre was during school and was a reason I wanted to pursue performing.

Q. Tell us a little bit about the "pop concert" premise of the show.

A. All the queens in the show are loosely referenced to a current pop star, Aragon - Beyoncé, Boleyn - Lily Allen/Avril Lavigne, Seymour - Adele, Cleves - Nicki Minaj/Missy Elliott, Howard - Ariana Grande and Parr - Alicia Keys. So with this in mind think about what a show would be like if all of those queens came together to do an epic show that is their untold side of the story and you get SIX.

Q. Tell us about your character, Aragon.

A. Being based off of Beyoncé, Aragon is a power house who knows exactly who she is and what she has been through to be who she is. She will take no problems or trouble from anyone.

Q. What do you remember of the first time you saw SIX?

A. That I couldn't believe that one day I was going to do that. Me - Nicole from Wolverhampton - was going to be Catherine of Aragon!

Q. SIX is unlike any other musical, what is it like to perform in and what does it mean to you to be in the show?

A. It means everything. This has been

a dream of mine since it first came to the Arts Theatre in London. From my very first audition back in 2018 for the original cast, I knew I was going to be in this show one day. Now that I am it is completely surreal performing everyday all around the UK. Reaching people that may never get the chance to go to London to see a show means everything to me!

Q. What does it mean to you to be able to perform SIX in your hometown of Wolverhampton?

A. It is going to be absolutely incredible a lot of family and friends are coming but also being able to be Aragon with a Black Country accent will show all those little performers in the audience that they can do it too! Nothing can stop you!

'Being able to be Aragon with a Black Country accent will show all those little performers in the audience that they can do it too!'



Bonnie & Clyde

Tuesday 5 - Saturday 9 March '24

Evenings at 7.30pm,
Wednesday & Saturday matinees at 2.30pm

READY TO RAISE A LITTLE HELL?

Two small-town kids from the middle of nowhere became the biggest folk heroes in all America. They craved adventure - and each other. Their names were Bonnie and Clyde.

Tickets from £16*
Age Guidance: 12+

Winner of Best New Musical at the WhatsOnStage Awards 2023, the West End cult-sensation is set to hold-up Wolverhampton Grand following two hell-raising seasons in London's West End.

Starring **Catherine Tyldesley** (*Coronation Street, Strictly Come Dancing*) as Blanche, **Alex James Hatton** (*Newsies, Heathers*) and **Katie Tonkinson** (*Bat Out of Hell*) as the notorious lovers, joined by **Sam Ferriday** (*The Cher Show, Rock of Ages*) as Buck, with **Jaz Ellington** (*The Voice*) as The Preacher. **Nate Landskroner** (*Waitress, Heathers*) will play the role of Clyde at midweek matinee performances - casting for alternate Bonnie will be announced soon.

Book now – it would be a crime to miss it!

★★★★★ 'A killer show' (*Daily Star on Sunday*)



WE TALK ABOUT
THE BACK STORY OF

BONNIE & CLYDE

...and why it's now on
the run around the UK

With *Bonnie & Clyde* we've attempted to delve into the minds and hearts of two sociopathic lovers while exploring the world and conditions that fuelled their deadly rampage. We've been as truthful as possible and as inventive as necessary.

From an early age, *Bonnie & Clyde* had much in common; a desperate need to escape the wretchedness of their lives, an addiction to adventure, an attraction to danger, and a complete lack of morality. They saw the American Dream turn into a nightmare of bread lines and soup kitchens and became obsessed with celebrity, not only for the fame it brought but for the freedom it delivered. American freedom. The kind that only money can buy.

At a time when criminals enjoyed cult status, young Clyde's role model was crime boss and media hound, Al Capone, a ruthless murderer who was cheered at baseball games. Bonnie's idol was silent film star Clara Bow, as famous for her sexual adventures and emotional instability as she was for her films.

Bonnie & Clyde followed in their footsteps, becoming notorious for both their criminality and their sexuality. They were the stuff of tabloid dreams — an ex-con and a married young woman on a sexually charged and deadly crime spree. While most people were imprisoned by poverty, Bonnie and Clyde ran free in the fastest cars Clyde could steal. They were punching life in the gut every chance they got, and they were adrenalized each time they knocked it to the mat.

But it wasn't long before adventure turned into survival and escape slipped into seclusion. Barely into their twenties, having killed thirteen people, most of whom were cops, their lives ended in a hailstorm of bullets. The Ford Sedan, once a symbol of freedom and life on the open road, was now their coffin, with Clyde dead behind the wheel



'We've been as truthful as possible and as inventive as necessary.'

and Bonnie's lifeless head resting on his shoulder.

This is where our story begins. Because their deaths were never in question. They knew they would "go down together," but that only intensified the exhilaration of the adventure. We are so thrilled to have this UK tour and grateful to the fans who put us on the map and kept us there.

From the creators of *Bonnie & Clyde* Book by Ivan Menchell, music by Frank Wildhorn, lyrics by Don Black and directed and choreographed by Nick Winston.



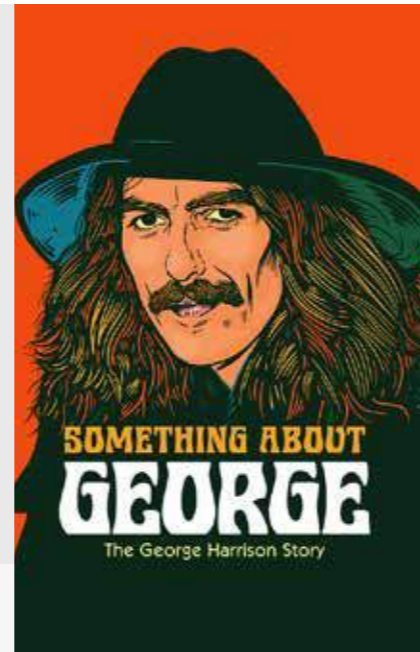
Something About George

Sunday 10 March '24 - 7.30pm

SOMETHING ABOUT GEORGE - THE GEORGE HARRISON STORY is a musical biopic tribute about the so-called "quiet" Beatle, and it's back following its hugely successful 2023 tour which celebrated what would have been George's 80th birthday.

Starring West End actor and musician **Daniel Taylor**, **SOMETHING ABOUT GEORGE - THE GEORGE HARRISON STORY** tells the truly remarkable tale of one of music's most understated icons.

Featuring a five-piece band performing beautiful songs such as *My Sweet Lord*, *Something*, *Got My Mind Set On You* and *Handle With Care*. From heartbreak to hedonism and song writing to instant success, **SOMETHING ABOUT GEORGE** will show you a life that was anything but quiet.



Tickets from £15*



Giovanni - Let Me Entertain You

Tuesday 12 March '24 - 7.30pm

The ultimate showman returns!

GIOVANNI PERNICE is back in 2024 for his brand new live tour – **LET ME ENTERTAIN YOU**.

The *Strictly Come Dancing* champion and BAFTA winner is the epitome of live entertainment.

Giovanni will be joined by a world class cast of professional dancers and West End performers to bring you an unforgettable experience.

A show of non-stop action – prepare to be entertained.

Dancer, performer, showman...**Giovanni** is THE Entertainer!

VIP packages available, contact Box Office for details.



Tickets from £25*



The Drifters

Sunday 17 March '24 - 7.30pm

THE DRIFTERS are the longest running singing group in pop history still performing live, having enjoyed over 50 hits worldwide.

The legendary group have been inducted into the Rock and Roll Hall of Fame, performed for the President of The United States and are listed among the greatest artists of all time by Rolling Stone magazine.

No other vocal group has achieved as much success artistically or commercially as

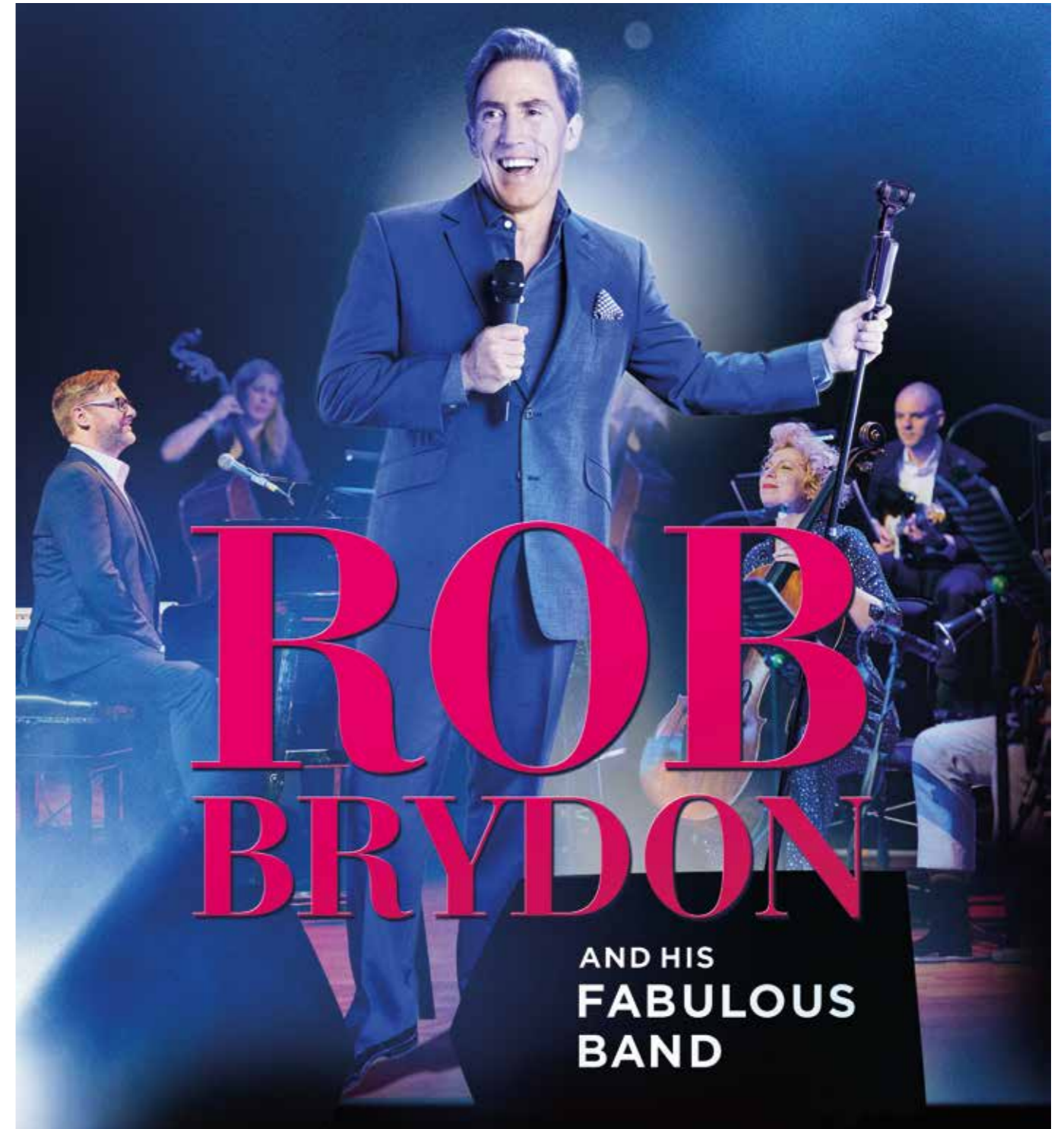
THE DRIFTERS and they remain among the bestselling acts of all time.



Tickets from £19.75*

Information is correct as of September 2023

*A £4 booking fee applies to all purchases. Book online at grandtheatre.co.uk



Rob Brydon - A Night of Songs & Laughter

Wednesday 13 March '24 - 7.30pm

After a sell-out UK & Australian Tour, **Rob Brydon** is back in Spring 2024 with his critically acclaimed show **A NIGHT OF SONGS & LAUGHTER**.

Don't miss one of the UK's finest entertainers and his superb 9-piece orchestra in a very special evening as **Rob** shares his personal musical journey from South Wales to Hollywood and back. Audiences will enjoy a brilliantly unexpected selection of toe-tapping tunes from *Tom Jones* to *Tom Waits*, *Elvis* to *Guys and Dolls* and of course those famed impressions of the likes of Mick Jagger, Michael Caine and Steve Coogan. Book early to avoid disappointment.

'A winning combination of emotionally rich trip-down-memory-lane songs, and sparkling comedy and impressions'
Daily Telegraph

Tickets from £20*



Information is correct as of September 2023

*A £4 booking fee applies to all purchases. Book online at grandtheatre.co.uk

DANCE CONSORTIUM presents

SÃO PAULO DANCE COMPANY

UK PREMIERE TOUR



Dance Consortium Presents São Paulo Dance Company

Friday 15 - Saturday 16 March '24

Evenings at 7.30pm

Post show talk with the company after the performance on Friday.

Brazil's finest dance company make their highly anticipated UK debut in spring 2024.

Fusing the elegance of classical ballet with the sensuality of Latin American dance, this 'sleek, sexy and highly technical' (*The New Yorker*) company of talented dancers are set to impress with three UK premieres.

Goyo Montero (resident choreographer with Carlos Acosta's company Acosta Danza) explores the idea of collective identities in **Anthem**, an epic and emotionally charged ensemble piece for 14 dancers, beautifully staged with dramatic lighting.

Gnawa, by **Nacho Duato** (Artistic Director of the Berlin State Ballet), draws on the Mediterranean colours and flavours of Valencia, powered by the hypnotic, ritualistic music of North Africa.

For the finale, Brazilian choreographer **Cassi Abranches'** colourful and flirtatious **Agora** sculpts the movement of each dancer's body with the percussive beats and bass grooves of Afro-Brazilian fusion.

'Passionate and energetic, São Paulo Dance Company combine international classical technique, fluidity and Brazilian swing'
Villes de Cannes, France

'The best dance company in Brazil' *Dancing Times*

Tickets from £12.50*



David Walliams AWFUL AUNTIE

LIVE ON STAGE!



Awful Auntie

Thursday 28 - Sunday 31 March '24

EASTER HOLIDAY FAMILY FUN!

Thursday - Saturday at 2.30pm & 6.30pm,
Sunday at 11am

When Stella sets off to visit London with her parents, she has no idea her life is in danger! When Stella wakes up three months later, only her Aunt Alberta can tell her what has happened. But not everything Alberta tells her turns out to be true and Stella quickly discovers she's in for the fight of her life against her very own awful Auntie!

Following their acclaimed productions of *Gangsta Granny*, *Billionaire Boy* and *Demon Dentist*, Birmingham Stage Company are proud to present a fabulous new production of David Walliams' amazing adventure story, featuring a very large owl, a very small ghost and a very awful Auntie!

"The Birmingham Stage Company's adaptations of my books are always brilliant, so I can't wait for the fun to begin again! It's going to be a hoot!" David Walliams

Tickets from £12*



Jurassic Earth

Sunday 24 March '24 -
12.30pm & 3.30pm

Calling all budding Rangers! Prepare to go on a JURASSIC adventure!

JURASSIC EARTH is stomping into Wolverhampton with a huge cast of the biggest and best Dinosaurs that ever walked the earth in this extraordinary realistic show!

Meet the bravest of rangers as they take you on a journey through JURASSIC EARTH, introducing their herd of the most incredible Dinosaur species to have ever lived!

Bring your biggest ROAR and your fastest feet as you take Ranger Danger's masterclass to become an Official Dinosaur Ranger – gaining the skills you need to come face-to-face with the World's largest walking T-Rex, a big-hearted Brontosaurus, tricky Triceratops, uncontrollable Carnotaurus, vicious Velociraptors & sneaky Spinosaurus!

Feel the EXCITEMENT of watching a Dinosaur Egg hatch in front of your eyes and the THRILL of meeting the cutest baby Hatchlings.

Expect a fun-filled 75 minute family show suitable for all ages, from 2 to adult, featuring astounding animatronics and excitingly REALISTIC performances.

Get ready to laugh, scream, sing and ROOOARRR as we welcome you to the greatest Dinosaur adventure on Jurassic Earth... So ROARSOME, you'll never want it to end!

N.B. Please do not feed your children to the Dinosaurs. This is not a service we provide. Although we have been inundated with enquiries.....

Tickets from **£21.75***



The Sooty Show

Sunday 7 April '24 - 2.30pm

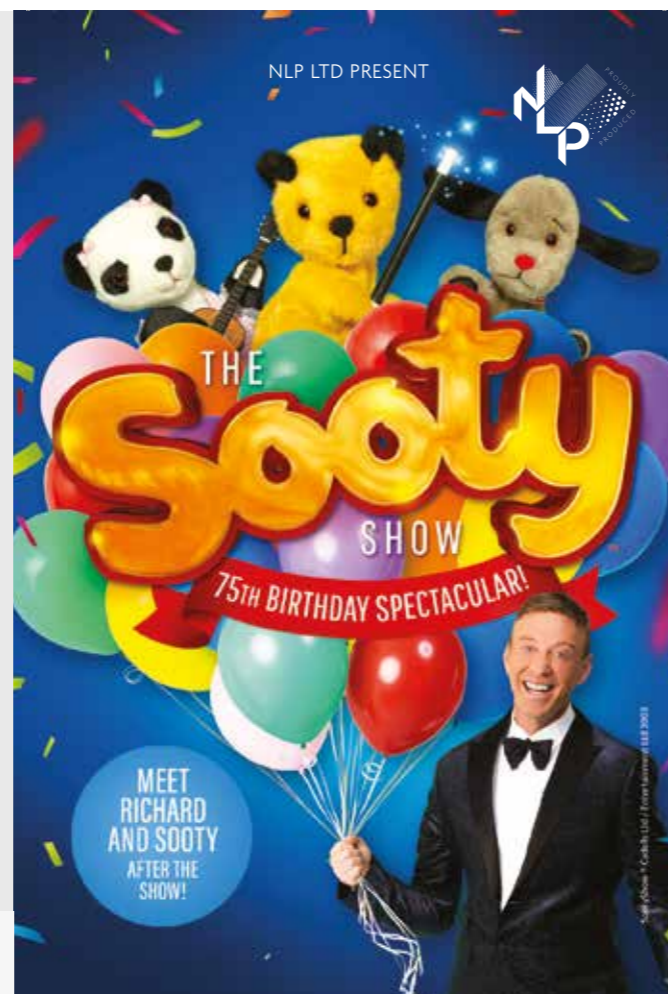
Celebrating 75 amazing years in show business, **Sooty, Sweep and Soo** are planning a very special birthday party and you're all invited. However, in true Sooty style nothing goes to plan!

The special guests are on their way – **Butch the bulldog, Ramsbottom the snake** and circus superstar **Michael Jordan**, who joins us direct from Blackpool's famous Tower Circus to stun us with his jaw-dropping juggling!

With buckets of audience participation and gallons of giggles, this spectacular celebration of the longest-running children's television show in the world will delight Sooty fans old and new and is a must-see treat for the whole family.

Plus – join us after the show to meet **Richard and Sooty!**

Tickets from **£13***



avanti

GRAND KITCHENS

Designing and manufacturing bespoke hand-built furniture since 1980



www.avantikb.co.uk

177 BIRMINGHAM ROAD, WOLVERHAMPTON WV2 3LU - 7 SHOWROOMS THROUGHOUT THE WEST MIDLANDS

WOLVERHAMPTON
GRAND
THEATRE

WOLVERHAMPTON

National
Theatre

**SPEAK
UP**

SPEAK UP SCHOOLS PROGRAMME YEAR 1 SUCCESS

Speak Up is the National Theatre's nationwide programme which sees young people, who have been most affected by the pandemic, working in collaboration with local artists and teachers to co-create artistic responses to issues that are most important to them. Responding to the current challenges in schools, the programme aims to develop young people's self-expression, wellbeing, and personal skills, with an open-ended offer to make creative projects in their local area. It is in partnership with Wolverhampton Grand Theatre as part of the national programme, which is also being delivered in Doncaster, Greater Manchester (Rochdale, Salford, Wigan), Leicester, North Devon, Outer East London and South Essex, Stoke-On-Trent, Sunderland, and Wakefield.

Speak Up aims to inspire a movement of young people who want to speak up about the issues that matter to them – in their schools, their communities and nationally. Young people will work collaboratively with their teachers, artists, local arts organisations, and the National Theatre to make artworks and creative projects.

Speak up forms part of TNP (Theatre Nation Partnerships) and partners include – Cast in Doncaster,

The Lowry in Salford, Queen's Theatre Hornchurch, Leicester Curve, Landmark Theatres venues in North Devon, Regent Theatre and Victoria Hall in Stoke-on Trent, Sunderland Empire and Sunderland Culture, Theatre Royal Wakefield, and Wolverhampton Grand Theatre.

Wolverhampton Grand Theatre's partner Speak Up Schools include Ormiston New Academy, Colton Hills Community School, Tettenhall Wood School and Aldersley High School Horizon Hub, Charlton School, and Ormiston Sheffield Community Academy.

Young people have worked with several artists and practitioners from across the Midlands and have taken part in mixed medias, fine art, graffiti art, photography, filmmaking, Brazilian drumming, and steel pan.

Ormiston New Academy have worked with their Speak Up representative Tristan Jones-Smith and have produced a film about academic pressures with the support and assistance of local film-makers Wolf Collective. Colton Hills Community School also worked with Tristan and produced a film about living with neurodiversity with the support and assistance of local film-maker Enzo Iantosca.

Ormiston Sheffield Community Academy worked with their Speak Up representative Fran Richards and

local film-maker Kieran Viyas and produced a short film highlighting the issue of knife-crime in Walsall, entitled 'How to Waste a Life'. The film premiered at the Wolverhampton Grand Theatre in July. The young people enjoyed an Oscars style evening with red carpet, awards, and speeches. The film is dedicated to the memory of a former Sheffield pupil Reagan Asbury, who sadly lost his life to knife-crime whilst on a night out in Walsall. Most notably, the film has been picked up by West Midlands Police and will be used as part of their knife-crime education in schools.

Sheffield now also have a dedicated space for all things Speak Up. A Speak Up mural was designed by the group and was bought to life by Wolverhampton Graffiti Artist Jack Sankson.

Your local Speak Up partner is Wolverhampton Grand Speak Up and Audiences Manager, Lucy-Ellen Parker, lucy.parker@grandtheatre.co.uk

Over three years, Speak Up will engage with 140,000 young people in 55 selected secondary schools nationwide. Together, we will inspire each other to find new ways to think, see and bring about change individually and in the world.

SCHOOL AND ARTIST SPOTLIGHT



Year 11-14 pupils at Tettenhall Wood School worked with Caris Jackson and created work based around their sense of identity and communicating their thoughts and ideas. They experimented with using oil pastels, watercolour ink powder, acrylic inks and water spays to create abstract art for the expressive backgrounds. Their self-portraits were made using pens and tissue paper and added as a collage, along with cartoon-style captions to Speak Up about how they see themselves in the world.



Year 7 pupils wanted to Speak Up about being bullied and feeling they must hide who they really are to try and fit in with the crowd. They wanted to send out the message that it was ok to be different and everyone deserves to be respected. Their mixed media acetate, pen and tissue paper art celebrates their uniqueness while sharing their important aspirations of acceptance.

Both schools have had their work printed on products and have raised money for Wolverhampton Food Banks by selling them. The work of both schools is now also on display as part of a permanent exhibition at New Cross Hospital.



CARIS JACKSON

Born in Wolverhampton, Caris is a mixed media collage artist living in Wellington, Shropshire. Her work, inspired by theatrical spaces and performers, is created by re-purposing vintage prints and papers, layered, and embellished with fabric remnants and recycled items to create opulent multifaceted art works.

She studied a Foundation Diploma in Art & Design in Wolverhampton, followed by a Fine Art degree at Liverpool John Moores University. After graduating in 1995, she began working as a participatory artist in schools and communities with a keen interest in the transformative qualities of costume and performance.

The theatricality of her work is undoubtedly influenced by visits to the Grand Theatre as a child and hearing family stories of her glamorous great-grandmother running the sweet shop next door until the 1950s.

www.carisjackson.com
Instagram @cariscollageartist

WITH THANKS TO

The Mohn Westlake Foundation Trustees share our belief in the importance of youth voice, and care about the detrimental effects of the pandemic on young people's aspirations, confidence, and agency. In partnership with Mohn Westlake Foundation we created Speak Up, and we are excited to be working together with young people in some of the most economically disadvantaged areas of the country to enable positive change in their lives, schools and local communities. The Mohn Westlake Foundation Trustees share our belief in the importance of youth voice, and care about the detrimental effects of the pandemic on young people's aspirations, confidence, and agency. Elinor Cole, Arts & Heritage Co-ordinator at The Royal Wolverhampton NHS Trust Charity

the Mohn
Westlake foundation

Frankie Boyle: Lap Of Shame

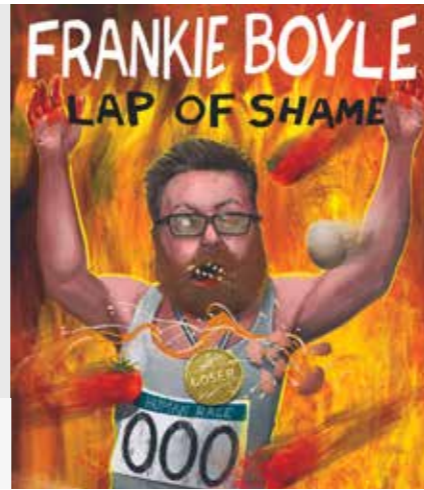
Monday 8 - Tuesday 9 April '24 - 7.30pm

Frankie Boyle's on tour. Buy a ticket, because by the time he arrives, the currency will be worthless and you and your neighbour's will be part of a struggling militia that could probably use a few laughs.

Show Policies: No phones/recording, no latecomers, no readmittance

Tickets £29.25*

Age Guidance: 16+ Likely to be swearing and adult content



Tiny Dancer - The Music Of Elton John

Wednesday 10 April '24 - 7.30pm

Get ready for an electrifying night of pure musical magic with TINY DANCER - THE MUSIC OF ELTON JOHN - Starring Tom Weston! Join us for an unforgettable experience as Tom Weston channels the charisma of Elton John himself, bringing to life the greatest hits that have defined generations. This is your chance to dance, sing, and party with your loved ones to the infectious melodies that have made Elton John a global icon. Don't miss out on this ultimate family night out - secure your tickets now and get ready to unleash your inner rock star!

Produced and directed by James Baker Productions and MRC Presents - the team behind Michael Starring Ben.

Tickets from £16*



Graziano Di Prima: Believe - My Life On Stage

Thursday 11 April '24 - 7.30pm

Following his sixth consecutive year on the hit BBC show, Graziano Di Prima and his wife Giada Lini will take to the stage in a brand-new show. Before the sequins and sparkles of Strictly, Sicily's very own Billy Elliot grew up working in the vineyards with his father. He hoped and believed that one day, dancing would be his career.

BELIEVE - MY LIFE ON STAGE, Graziano's first solo tour, tells his story in his distinct style. This new show is a tribute to his Italian ancestors and an electrifying evening of Latin and Ballroom dancing. Including a special thank you to a family who never wavered in their belief that their son would one day be a professional dancer.

Tickets from £25*

Limited VIP Meet & Greet tickets available.



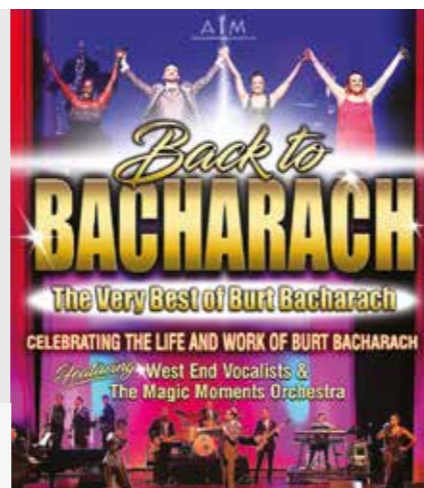
Back To Bacharach

Sunday 14 April '24 - 5pm

Featuring breath-taking performances from our West End cast and the amazing musicianship of The Magic Moments Orchestra, BACK TO BACHARACH celebrates the timeless masterpieces of Burt Bacharach "The Hitmaker" behind one of the greatest American songbooks of the 20th Century.

Burt Bacharach who together with Hal David, penned some of the most memorable and iconic hits that stand the test of time. Join us for an evening that celebrates all of his greatest hits, throughout his incredible lifetime, including; Alfie, What The World Needs Now, The Look Of Love, I Say A Little Prayer, Close To You, Walk On By, What's New Pussycat, Always Something There To Remind Me, Magic Moments, Raindrops Keep Falling On My Head and many, many more.

Tickets from £14.50*



“A FANTASTIC DAY OUT AT THE RACES
Worth a visit anytime of the year!”

LADY WULFRUNA STAKES RACEDAY

The pinnacle of Wolverhampton's racing calendar, featuring the most prestigious and valuable race of the year.



KIDS GO FREE

EASTER FAMILY FUN DAY

Our Bank Holiday raceday has become a Wolverhampton family tradition, providing a bumper crowd, high-action racing, an abundance of free entertainment for kids and a lively atmosphere.

Ladies Evening

Renowned for sensational style and popular post-racing entertainment, Ladies Evening offers racegoers a chance to get the gang together for a fantastic night out, on a glorious summer's evening.



The innovative team racing competition comes to Wolverhampton in 2023, where 7 regional teams race for the championship title over 6 fixtures across the UK!



Boxing Day

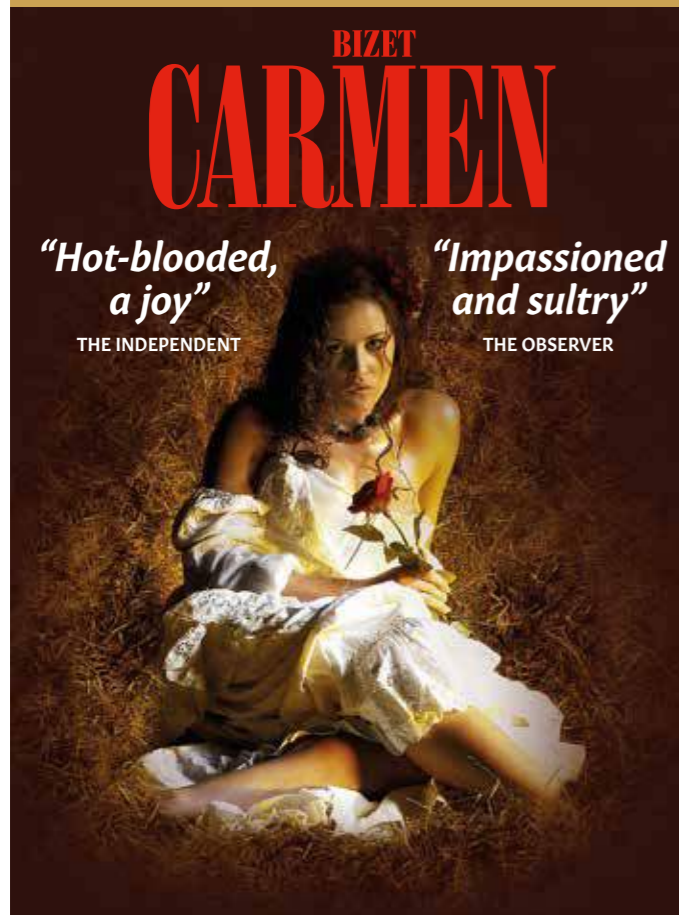
A day at the races is the perfect Boxing Day activity, so much so that it has become one of the most popular fixtures in the calendar.



DON'T MISS OUT ON ALL OF THE ACTION AT OVER 70 RACEDAYS THIS YEAR!

Visit our website for more information wolverhampton-racecourse.co.uk

SENBLA PRESENTS OPERA INTERNATIONAL'S AWARD-WINNING ELLEN KENT PRODUCTIONS FEATURING THE UKRAINIAN OPERA & BALLET THEATRE KYIV WITH INTERNATIONAL SOLOISTS, HIGHLY-PRaised CHORUS AND FULL ORCHESTRA



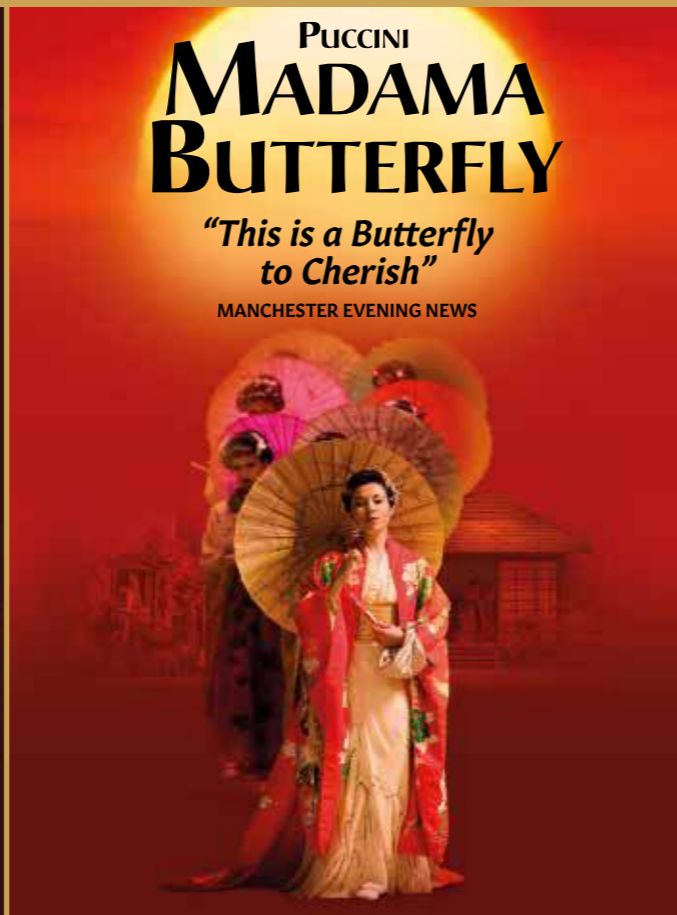
BIZET CARMEN

"Hot-blooded,
a joy"

THE INDEPENDENT

"Impassioned
and sultry"

THE OBSERVER



PUCCINI MADAMA BUTTERFLY

"This is a Butterfly
to Cherish"

MANCHESTER EVENING NEWS

Carmen

Friday 12 April '24 - 7.30pm

An evening of passion, sexual jealousy, death and unforgettable arias.

This dazzling production with orchestra features Bizet's unforgettable melodies including *The Toreador's Song*, Carmen's enticing *Habanera*, and Don José's lyrical *Flower Song* in a setting evoking the stunning architecture of Seville and its main square with Roman and Moorish influences.

Sung in French with English surtitles.

Madama Butterfly

Saturday 13 April '24 - 7.30pm

Back by overwhelming public demand, this award-winning Opera returns in a new production with exquisite sets including a spectacular Japanese garden and fabulous costumes including antique wedding kimonos from Japan.

One of the world's most popular operas, Puccini's **MADAMA BUTTERFLY** tells the heart-breaking story of the beautiful young Japanese girl who falls in love with an American naval lieutenant - with dramatic results.

Highlights include the melodic *Humming Chorus*, the moving aria *One Fine Day* and the unforgettable *Love Duet*.

WINNER 'BEST OPERA AWARD' Liverpool Daily Post Theatre Awards.

Sung in Italian with English surtitles.

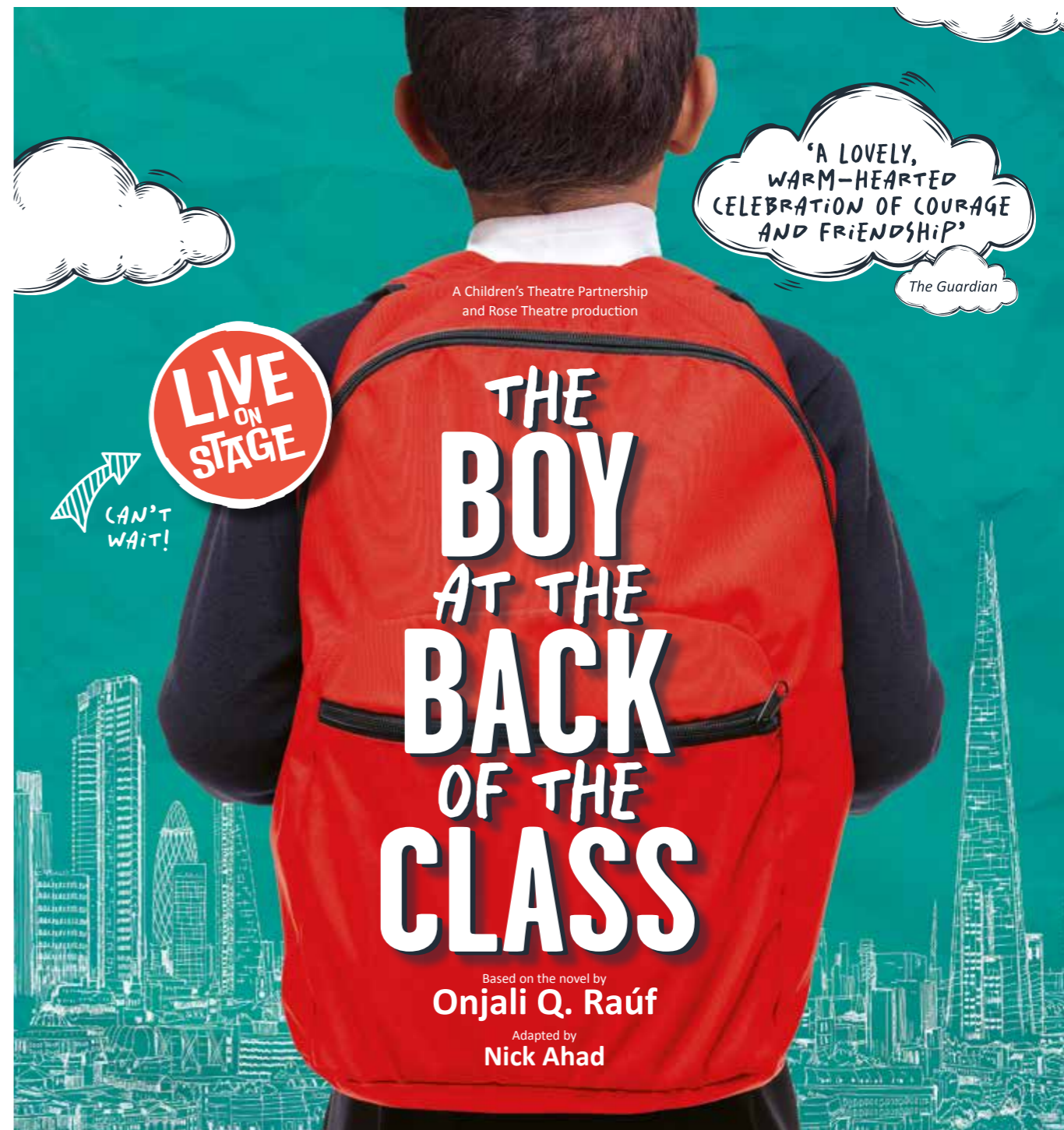
*Cast subject to change.



Early Bird Offer:
Save £5 per ticket if booked before 30 September 2023. Top 2 price bands only. Save 20% off if booking to see both Carmen & Madama Butterfly.

Tickets From £23*

Information is correct as of September 2023
*A £4 booking fee applies to all purchases. Book online at grandtheatre.co.uk



LIVE ON STAGE

CAN'T WAIT!

'A LOVELY, WARM-HEARTED CELEBRATION OF COURAGE AND FRIENDSHIP'
The Guardian

A Children's Theatre Partnership and Rose Theatre production

THE BOY AT THE BACK OF THE CLASS

Based on the novel by **Onjali Q. Raúf**
Adapted by **Nick Ahad**

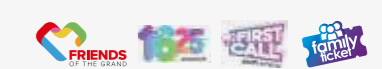
The Boy At The Back Of The Class

Tuesday 16 - Saturday 20 April '24
Tuesday, Friday, Saturday 7pm, Wednesday & Thursday 10.30am & 2pm, Saturday at 2pm

Based on the book by Onjali Q. Raúf
Adapted for the stage by Nick Ahad
There used to be an empty chair at the back of the class, but now a new boy called Ahmet is sitting in it. He's nine years old (just like me), but he's very strange. He never talks and never smiles and doesn't like sweets - not even lemon sherbets, which are my favourite!

Tickets from £9.75*
Age Guidance: 7+

After learning that he has fled his own war-torn country, Ahmet's classmates have 'The Greatest Idea in the World' - a magnificent plan to reunite Ahmet with his family. An unexpected and often hilarious adventure follows, all topped off with a terrific twist.
Told from a child's perspective, balancing heart and humour, **THE BOY AT THE BACK OF THE CLASS** highlights the power of friendship and kindness in a world that doesn't always make sense and reminds us that everyone needs a place to call home.
'A lovely, warm-hearted celebration of courage and friendship.'
The Guardian
'This is a beautiful, open-hearted debut that should help children be the best they can be and realise the power of kindness.'
Book Trust
Winner of the Blue Peter Book Award 2019
Winner of the Waterstones Children's Book Prize 2019





Access

A WORLD OF THEATRE

WITH FRANK & ALISON LITTLEFORD

According to the Alzheimer's Society there are currently around 900,000 people in the UK living with dementia and this figure is set to rise to 1.6 million people by 2040. As a result, the need for social and community-based support is rapidly increasing and with this in mind, our Memory Cafés began in 2019 and were designed in conversation with people affected by dementia that wanted to keep music and theatre in their lives in a safe and supportive environment. We had the privilege of speaking with Frank and Alison Littleford about their experiences of dementia and how attending groups such as the Memory Café can help...



DID YOU KNOW...
PEOPLE LIVING WITH DEMENTIA CAN GET A FREE CARER TICKET WITH OUR ACCESS REGISTER SCHEME?

OUR DEMENTIA EXPERIENCE

It can be difficult to get a diagnosis and early diagnosis is crucial to ensure that help is given as quickly as possible. Dementia changes things – we are constantly having to adapt to an altered way of life as Frank's illness progresses. We are immensely grateful to family and friends for their love and support. We are both very keen to raise awareness of the illness and raise funds for research. Effective treatments are on the horizon - in the future families will hopefully be spared the heartache of losing someone they love to dementia.

WORDS OF WISDOM

Don't be afraid to ask for and accept help. Ask questions, seek answers. Find out what is available locally that might be of help to you. Give groups like the Wolverhampton Grand Theatre Memory Café a go – you'll meet some kind people who will help you realise that you're not alone. Remember that dementia is a physical illness of the brain and nothing to be embarrassed about. Try to maintain a sense of humour – although I know that isn't always easy to do. Most of all, be kind to yourself.

LIVING WELL WITH DEMENTIA

The Grand Theatre Memory Café is a lifeline for people living with dementia, their carers and loved ones. Each session provides an opportunity to spend a very pleasant couple of hours with others in a similar situation, enjoying music and lovely company. If other local organisations like Wolverhampton Grand think creatively about how they could also support people living with dementia they can improve the quality of life for local residents, reduce the stress and isolation that carers might be experiencing and improve the mental health of their service users.

We have both always loved The Grand Theatre – we are lucky to have an amazing community resource in the centre of Wolverhampton. My first visit was to the pantomime when I was only 3 years old and I've been a lover of theatre ever since! Our favourite thing is the opportunity it provides to experience a wide range of shows– there is something for everyone. However, the other thing that makes us love Wolverhampton Grand Theatre is the amazing, friendly, helpful staff who make us feel welcome, valued and cared for – they are a credit to the theatre. We both love theatre, films, dance and live music and although Frank is likely to forget these events after he has attended, he definitely enjoys them 'in the moment.' Frank is a keen Wolves supporter and we also attend The Wolves Molineux Memories each week which is a group for people experiencing memory problems.

For more information about our accessible services and Memory Cafés, please contact the Outreach Team by calling **01902 57 33 20** or email access@grandtheatre.co.uk

WOLVERHAMPTON
GRAND
THEATRE

STAGES

SUMMER SCHOOL



This summer we held our very first two-week intensive West End Musical Theatre Summer School. Young people from around the Midlands rehearsed some of the biggest numbers from the biggest musicals past and present, which they then performed to a packed audience of friends and family at Colton Hills Community School Theatre.

Selections from *Annie*, *Everybody's Talking About Jamie*, *Jesus Christ Superstar* and *Hamilton* bought the house down to rapturous applause to culminate two weeks of being taught by the best in the business! Young people were taught by industry professionals all with professional credits, in the West End, on TV and in film.

Young people were under the direction of Lucy-Ellen Parker and Tristan Jones-Smith, with musical direction from Rob Murray and choreography by Isobel Burgess.

Isobel said: *It's been brilliant to get back into the swing of things after the pandemic and be in a creative environment. It was wonderful to see young people from all areas of Wolverhampton work together to produce a show that we are all very proud of. Working with Wolverhampton Grand Theatre has been a joy and I feel honoured to have been given the opportunity to work with an amazing theatre, a great bunch of creatives and young people.*

Our Stages Summer School is not only about performance, but about supporting and encouraging our students. We provide a safe and supportive environment for young people. Students are encouraged to

exchange ideas, express themselves and most importantly, be themselves.

We spoke to Lucy-Ellen, who said: *The joy of getting on stage and performing with friends is palpable. Musical Theatre provides children with a platform to express themselves through singing, acting, and dancing. This encourages them to be creative and confident in their abilities, which can help to boost their self-esteem. They learn to embrace their unique talents and showcase them in a fun and supportive environment. It has been a full on two weeks, but the result speaks for itself; what the young people have produced is brilliant! Wolverhampton is fizzing with talent, and it's been a pleasure to support the young people to feel excited and proud of what they have achieved.*

Our Stages Summer School is set to make a return in 2024, from Monday 5 – Saturday 17 August, this time performing on the Wolverhampton Grand Theatre Stage.

Along with the opportunity to perform, we are offering young people who would like to work behind the scenes, the chance to take part a two-week technical summer school, working with Wolverhampton Grand Theatre's technical team and learning about what it takes to put a show on stage. The two weeks will culminate in two performances, performed, and technically ran by all the young people who have taken part.

Book early for Stages 2024 and you will receive a £50* discount on your place.

For more information contact Lucy-Ellen Parker on **01902 57 33 20** or email lucy.parker@grandtheatre.co.uk



*t&c's apply



SIXTEEN 25

A WORLD OF

THEATRE

AWAITS

WOLVERHAMPTON
GRAND
THEATRE

Love Theatre? Aged 16 -25?
Join Sixteen25 for free, and enjoy exclusive benefits, allowing you to see more of the theatre you love.



Priority booking, special events and potentially huge savings on show tickets... Sound good?

If you're aged 16 to 25, you can get these benefits by becoming a Sixteen25 member.

One of the best things about our Sixteen25 membership scheme is that it's free to join and offers priority booking when most new shows go on sale, so you can have your pick of the seats.

You can also enjoy 15% off your ticket for most of our shows when you book in advance, as well as unique access to standby tickets.

Standby tickets cost £10* and are available in person at the Box Office one hour before the show starts. You have the chance to buy the best available tickets, which could mean you're buying a top band ticket for a fraction of its original price.

As a Sixteen25 member, you will also receive invitations to exclusive

events, where you can meet other theatre lovers.

When The National Theatre's *Macbeth* visited, Sixteen25 members were invited to a free special evening with live music, a backstage tour, a chance to explore the set on stage and a meet and greet with cast. Members were also given complimentary tickets to watch the show.

Joining Sixteen25 is free, and easy. Simply register online at grandtheatre.co.uk/memberships, and your membership will be active immediately. Alternatively, you can register by phoning the Box Office on **01902 42 92 12**.

So, what are you waiting for? A world of theatre awaits...



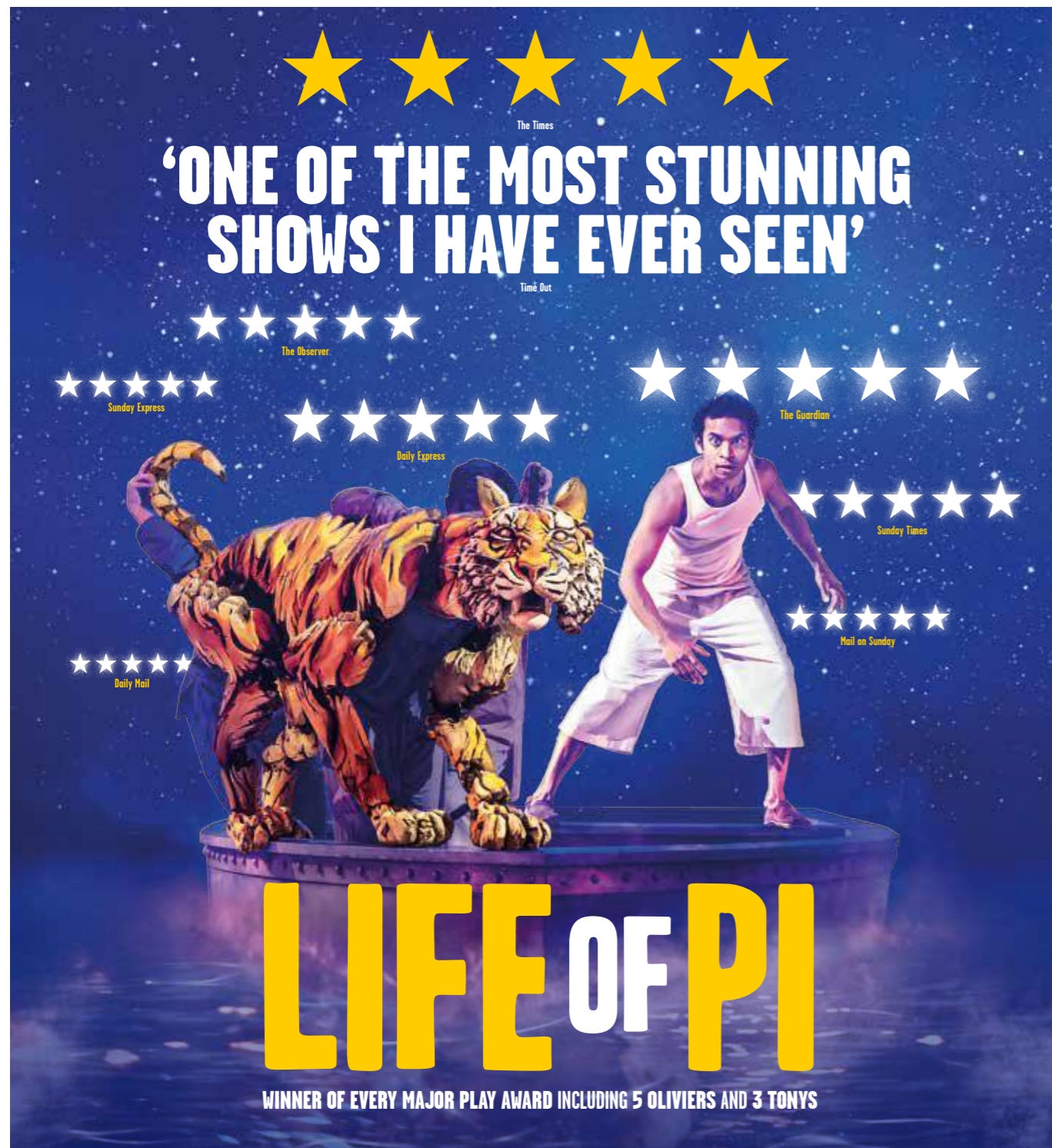
Standby tickets are not available for every show. Standby ticket availability is announced on the Grand Theatre's Facebook page on the Wednesday before the show run starts.

If you really want to see a show and/or want to sit in a particular seat we always advise you to book your ticket as soon as possible to avoid disappointment.

Standby tickets can only be issued as e-tickets. E-tickets can be shown on your mobile device or printed at home ready to present when you arrive at the theatre.

Standby tickets are available to Sixteen25 members only and are not transferable. Our ticket scanning machines will recognise your standby discount and you may be asked to present photo ID to verify your name and age.

*A £4 booking fee applies to all purchases



TWO SLICES OF PI

Divesh Subaskaran and Adwitha Arumugam on the adventure of sharing the iconic role.

What are your backgrounds?

Divesh: I was born in Malaysia and grew up in Singapore. I came to London after I did two years of military service in Singapore. I've only lived in the UK for the last four years and I've never been to most of the places we're touring to. It's so funny because unlike the character of Pi, I'm not a very adventurous person. It took this job for me to see the country and I'm loving it.

Adwitha: I come from Chennai, which is a couple of hours away from Pondicherry where the play is set, and I spent a lot of my childhood there. Playing Pi, I've been able to draw on real experiences, real people I know and real images I have in my head. I came to London about four years ago for drama school. I'm really looking forward to going on tour because it's a great opportunity to see the UK. In Sheffield, for example, we went for breakfast to this quaint café that we wouldn't ever have gone to if we weren't in the show – and I had the best iced chai of my life.

With its five Olivier Awards in the West End and three Tony Awards in New York, the show is a proven success. Have you been able to discover the part of Pi for yourself?

Divesh: I definitely feel I've found my own way into it. The creative team of Max Webster,

Finn Caldwell, Scarlet Wilderink and Lolita Chakrabarti have all worked on the show for so long and have an understanding of what the story is all about and the best way to tell it. But I've not felt any pressure to be like another performer. They've been extremely gracious to me in letting me figure out this character for myself. You would think they had a formula, but I don't feel I'm filling the shoes of somebody else. It is super exciting to come at it from my point of view.

Adwitha: There is no space in the play to robotically go through the moves. Yann's words and Lolita's words are so beautiful and it is such an emotionally moving play that it cannot be copied and pasted.

What do you bring to the part?

Divesh: As well as reading the novel and the script, I travelled to Pondicherry a month before rehearsals. I spent time living in the French quarter. Obviously, the fact that Pi is out at sea for a year is hard for anyone to match, but I've experimented with some things, for example, trying to fast and seeing what hunger feels like. I fasted for a week. The very first bite I had to eat – it was a croissant – was like ecstasy. Every bite after that was kind of average!

Being in India was great – the environment, the people – it's completely different from where I live in London. There's a certain freedom of expression. I felt what it was like to be in hot weather, to drink chai every day. Pi is very philosophical and spiritual, so I went to temple, mosque and church. Whenever I would walk past a temple, I would just go and sit in it for a bit and try to surround myself with what the character did. It gives you the confidence that you've been to that place and you've seen what it's like. Your sweat is different. The way you experience heat is different.

Adwitha: Obviously, I'm playing Pi as

female and that in itself changes a lot of things because it's 1970s in India and gender roles were quite defined at that point. Relationships change, the way Pi sees the world changes and the perspective on things changes. I'm playing Pi very differently from Divesh, but we have a very collaborative relationship; when I'm doing my run-through he watches it and tells me things he thought worked and things he might apply to his own performance. And similarly when he's performing, I'm sat there in the front, giving him notes when he needs it because I've been through the process. Nobody else knows what it's like to be in these shows so we've got each other's backs.

Why do you think *Life of Pi* has proved so successful?

Divesh: There are a plethora of reasons. It's a story about survival, human nature and the animalistic side to human beings. To me reading Yann Martel's book as someone who grew up in a Hindu household, I'm thinking this guy knows his stuff when it comes to all the religious texts. But ultimately it's a story about survival and how we have this dual nature that comes into conflict sometimes. We are not just one thing; we are multifaceted human beings. And a story about being on a boat with a tiger for a year – what's not exciting about that?

Adwitha: It's such a human story. It's the story of life. It's what every one of us goes through. Every one of us has a Richard Parker, every one of us has a lifeboat, every one of us has been stranded in the middle of the Pacific Ocean and somehow found a way to a magic island and finally ashore. All of us have been through it and all of us relate to it because it's a story of family, hope, survival love, belief, faith. These are things that are fundamental to human society.

Life Of Pi

Monday 22 - Saturday 27 April '24

Evenings at 7.30pm,
Wednesday & Saturday matinees at 2.30pm

Based on the best-selling book by Yann Martel, the five-star hit show comes to Wolverhampton.

Winner of five Olivier Awards, including Best New Play! After conquering the West End and Broadway, the five-star 'theatrical phenomenon' (*Telegraph*) embarks on its biggest adventure yet.

Tickets from £19.50*

Age Guidance: 8+

Jaw-dropping visuals and world-class puppetry combine in a unique and 'breath-taking' (*The Times*) theatrical event that is 'a wonder to behold' (*Daily Mail*).

After an epic storm in the Pacific Ocean, Pi is stranded on a lifeboat with four other survivors – a hyena, a zebra, an orangutan, and a Royal Bengal tiger.

Based on the global phenomenon and winner of the Man Booker Prize, selling over fifteen million copies worldwide, **LIFE OF PI** is the hugely popular story of an epic journey of endurance and hope. Don't miss the West End and Broadway spectacle on its first ever UK tour.

"It will make you believe in theatre. A triumph." (*Sunday Times*)



IN CONVERSATION WITH

AKASH HEER

...one of the team of puppeteers it takes to bring to life Richard Parker, the Royal Bengal tiger, in *Life of Pi*.

Akash: I was born in Anglesey in North Wales and left there in 1993 when I was quite young. We moved to Wolverhampton, where I have my friends and family, so I look forward to coming back and performing at the Grand Theatre.

When I got the part, puppeteering the head of the tiger, I was excited but also shocked because I'm an actor. Movement was an important part of my training, but everything I've done has been acting. I auditioned for some of the characters in *LIFE OF PI* and took part in a movement workshop and then they invited me back for a puppetry audition. I was quite surprised but they really liked my movement. The audition was so much fun. To see the passion they all had for this production made it more exciting. Normally you have audition nerves but I was just honoured to be in this space and to learn different techniques. I would leave the auditions revved up and wanting to continue. The energy in the room was electric. When I got the part I was over the moon.

I think about what my tiger would be like if they were human. I even have a Spotify playlist for my tiger. Music is such a huge part of me and I like to create music that fits my

character. They've given us the structure, but they are continuously open for us to explore and discover. Once you've got the format down, you're open to explore.

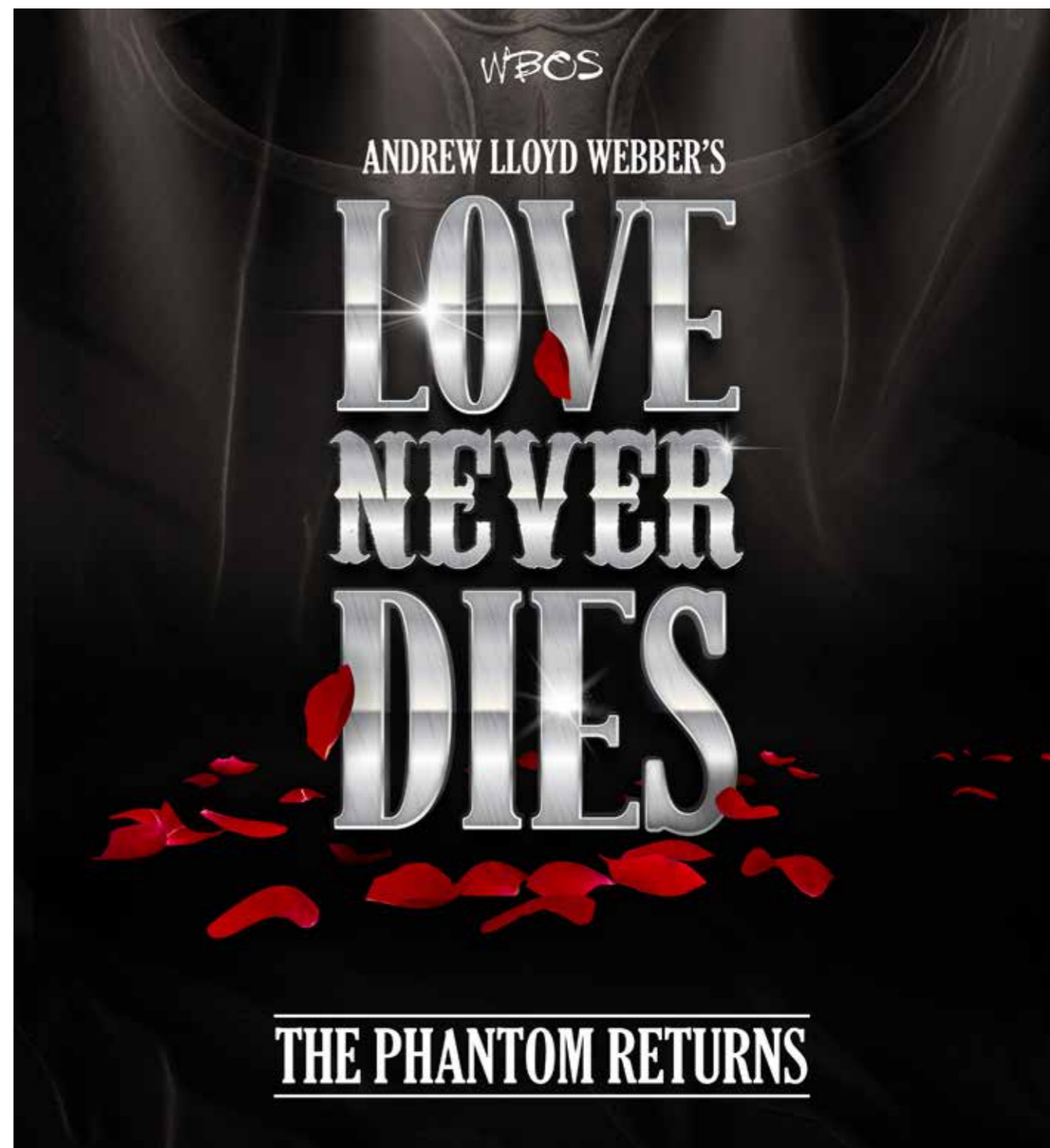
Bringing the tiger to life needs three different bodies but you sync and connect with breath. When the breath beats through to the heart and the hind only then do I feel truly connected. You feel you have connected to two other souls and you are in charge of this beast. You walk forward, you pause, you react, you attack and when everything syncs up it's such an exhilarating feeling. Each team has a different tiger. Yes, we have the same scenes, intentions and objectives, but each tiger is different. I'm a tiger that's more dominant, more ferocious. You'll have another tiger that is more cautious and observant. I'm so excited to see how my tiger develops over a month, three months and a year. They encourage us to explore and it is liberating to know you can add more flavour to your tiger.

In our first week of rehearsals I went with my actor's cap on and I had to work on connecting with the puppet so the puppet was more dominant than me. I am a 6ft 1 guy and when I'm on stage you see me. I have learned so much about not overstepping

the line: the puppet is the dominant figure and the three puppeteers are part of it. It's such an empowering experience. When you allow yourself to be open and to surrender to the puppet, it can take over your emotions. It makes me feel strong, grounded and emotional – I feel like a tiger.



'It's such an empowering experience... I feel like a tiger'



WBOS Present Love Never Dies

Wednesday 1 - Saturday 4 May '24

Evenings at 7.30pm

Wednesday & Saturday matinees at 2.30pm

WBOS are extremely proud to present the UK Amateur Premiere of Andrew Lloyd Webber's **LOVE NEVER DIES**.

This spectacular new musical reunites the masked Phantom with his only true love and musical protégée, the stunning beauty Christine Daaé. **LOVE NEVER DIES** is a roller-coaster ride of intrigue, obsession and romance – where little is as it seems.

Tickets from £14.50*

The year is 1907. It is 10 years after his disappearance from the Paris Opera House and the Phantom has escaped to a new life in New York where he lives amongst the screaming joyrides and freak-shows of Coney Island. In this new and electrically-charged world, he has finally found a place for his music to soar. All that is missing is his love – Christine Daaé.

In a final bid to win back her love, the Phantom lures Christine, her husband and their young son, Gustave to the glittering and glorious world of Coney Island, not knowing what awaits them. As old wounds are reopened and forgotten memories unlocked, the Phantom sets out to prove that indeed, **LOVE NEVER DIES**.

An amateur production by arrangement with The Really Useful Group Ltd. Music by Andrew Lloyd Webber. Lyrics by Glenn Slater. Additional lyrics by Charles Hart. Book by Ben Elton. Based on *The Phantom of Manhattan* by Frederick Forsyth.



Psychic Sally

Monday 13 May '24 - 7.30pm

The nation's favourite psychic is back on tour! **Sally** has been wowing theatre audiences young and old around the world for over 12 years. Her show will have you on the edge of your seat, as she continues to bring mediumship into the 21st century. Whether you know her through watching her on *Celebrity Big Brother* or reading one of her best-selling books, there is nothing quite like seeing **Sally** live on stage.

With **Sally's** love, laughter and warmth, this show is a unique evening not to be missed. Book your tickets now to see this phenomenal psychic in action.

The show is investigational and for the purpose of entertainment.



Tickets from £19.50*



The Sensational 60s Experience

Sunday 19 May '24 - 7.30pm

With a brand-new production for 2024. Join us for the musical phenomenon of 2024, with this festival of nostalgia. The show with the definite feelgood factor will transport you back to that magical decade that was the 1960's.

Whether you come to relive your childhood memories or you just simply want to see what your parents have been raving about for all these years this is the show to see. These legends of the 60's will deliver to you a night never to be forgotten.

Step back in time to when pop music was at its very best.



Tickets from £20*



Michael Starring Ben

Monday 20 May '24 - 7.30pm

Take a journey back in time to remember *Michael Jackson* – the man, the music and the magic.

MICHAEL STARRING BEN is a hit theatre production starring the UK's ultimate *Michael Jackson* tribute star, **Ben Bowman**. Not only does he look and sound like the King of Pop, but he's honed his routine so carefully that audiences truly believe they are watching *Michael Jackson* himself.

The show features a live band, dazzling costumes and the performer's iconic dance routines. It also showcases the greatest hits of *Michael Jackson* and also of *The Jackson 5* including *Beat It*, *Billie Jean*, *Thriller* and *Man in the Mirror*.



Tickets from £16*



Chaka - The Music of Chaka Khan

Wednesday 22 May '24 - 7.30pm

An exhilarating music show celebrating one of the world's most gifted music icons and multi-grammy award winner, *Chaka Khan*.

Honoring the legacy of a legendary singer and songwriter who has captivated audiences and inspired generations of singers for over five decades with her funk, soul, pop and dance hits, **CHAKA - THE MUSIC OF CHAKA KHAN** is the ultimate musical tribute celebrating an icon. Led by the incomparable **Sulene Fleming** (*The Brand New Heavies*, *Incognito*, *The New Master Sounds*) and featuring a Stella live band, this 2-hour music show encapsulates the true essence of *Chaka Khan*.

Featuring the all-time diva greats and anthemic dance floor hits such as *I'm Every Woman*, *Ain't Nobody*, *I Feel For You*, *Through The Wire*, *Like Sugar*, and the funk/soul *Tell Me Something Good*, *Sweet Thing*, and many more, this show is chock full of irresistible groove and dance floor smash hits – a must see for anyone who loves funk, soul, and dance floor diva classics.

As *Bridget Jones* says; "I prefer Vodka, and *Chaka Khan*".



Tickets from £18.50*



Tom Allen: Completely

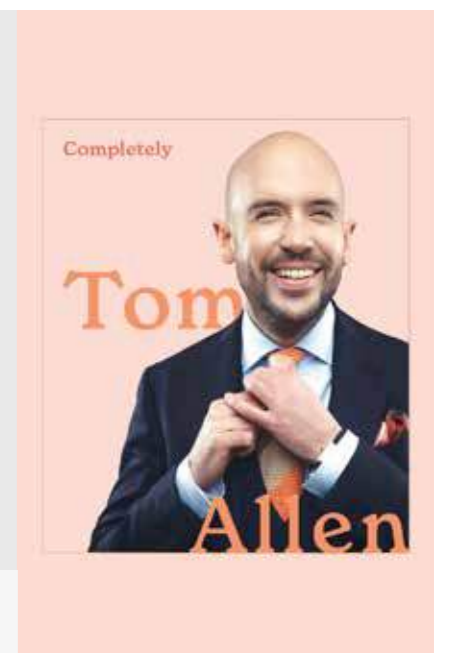
Thursday 23 May '24 - 8pm

Tom Allen has finally moved out of his parents' house, which has been great news for him, better news for department stores and even better news for his latest stand-up tour as he's eager to share his life updates, get your opinions on his vegetable patch and delve into the protocol of inviting friends with children for dinner.

The household name with his signature acerbic wit and riotous storytelling, **Tom** is the host of *The Apprentice: You're Fired* and co-hosts *Cooking With The Stars*, *Like Minded Friends* and he is also a regular on *Bake Off: An Extra Slice* and *There's Something About Movies*.

Age Guidance: Strictly 14+, likely to be swearing and adult content

Tickets £26.75*





Peppa Pig's Fun Day Out!

Saturday 25 - Sunday 26 May '24

Saturday at 10am, 1pm & 4pm,
Sunday at 10am & 1pm

Peppa Pig is back in her oinktastic brand new live show, **FUN DAY OUT!**

Join Peppa, along with her family and friends as they go to the zoo and also the beach for a special party- it's going to be an exciting and fun packed day.

Prepare to sing and dance with colourful scarecrows, feed the penguins, build big sandcastles, and even swim in the sea!

Packed full of songs, dance and muddy puddles, **PEPPA'S FUN DAY OUT** guarantees giggles and snorts for all Peppa fans, and a perfect introduction to theatre.

Tickets from £12.75*



Madagascar The Musical

Thursday 30 May - Sunday 2 June '24

Evenings at 5pm,
Saturday & Sunday matinees at 11am,
Relaxed Performance: Sunday at 11am

Join all of your favourite crack-a-lackin' friends as they escape from their home in New York's Central Park Zoo and find themselves on an unexpected journey to the madcap world of King Julien's **MADAGASCAR**.

Alex the lion is the king of the urban jungle, the main attraction at New York's Central Park Zoo. He and his best friends – Marty the zebra, Melman the giraffe and Gloria the hippo – have spent their whole lives in blissful captivity before an admiring public and with regular meals provided for them. Not content to leave well enough alone, Marty lets his curiosity get the better of him and makes his escape – with the help of some prodigious penguins – to explore the world.

Starring *CBBC* and *Strictly Come Dancing* Star, **Karim Zeroual** as King Julien get ready to join Alex, Marty, Melman, Gloria and those hilarious, plotting penguins as they bound onto stage in the musical adventure of a lifetime. Filled with outlandish characters, adventure galore and an upbeat score, you'll have no choice but to *Move It, Move It!*

Tickets from £17.50*



Dementia-friendly THEATRE



Since 2019, Wolverhampton Grand Theatre has been working hard to enrich the lives of our customers living with dementia and their loved ones. We believe that live theatre should be accessible to all, and our dementia-friendly theatrical Memory Cafés and events provide a safe and supportive space to make this possible.

We host three Memory Cafés throughout each month and reach up to 60 people per café. They are free to attend and include an hour of live entertainment, refreshments, and the chance to meet people in a similar situation.

To benefit as many people as possible, we added a Memory Café tailored to the Black, African & Caribbean communities and these include Motown, Reggae, Gospel & Soul music.

Everyone is welcome to attend any of our cafés, but we will continue to diversify our content to ensure we cater to as many people as possible.

UPCOMING EVENTS:

- **Sofie Clayton & Carl McGregor:**
Friday 6 October,
Friday 3 November & Friday 8 December
- **Ian Adams & Julie Paton:**
Thursday 21 & Friday 22 December
- **Darcie Edwards:**
Thursday 16 & Friday 17 November
- **The Bluebird Belles:**
Thursday 26 & Friday 27 October
Thursday 25 & Friday 26 January

"Remy and the team are so welcoming; my husband enjoys two hours of music and friendship and at no cost to us. The theatre is working hard to make a positive difference to people. Wolverhampton has deprived areas with no provision for people with dementia - this group has a hugely positive impact on the local community."



Our Memory Cafés and Care Home tours wouldn't be possible without the generosity of our patrons & sponsors:



Accessible PERFORMANCES

BSL Interpreted, Captioned, Audio Described, Relaxed and Dementia Friendly performances are among the services that are offered at Wolverhampton Grand Theatre. For further information on our access services and facilities, visit grandtheatre.co.uk/access

Did you know we operate an Access Register scheme that provides discounted tickets for those who require additional support to access the theatre? Signing up to the scheme also means you can use the discount online and access 'best available' seats for those who require wheelchair positions, Audio Described, BSL Interpreted & Captioned performances. Application forms can be downloaded from our website or to request a form please contact the Box Office on **01902 42 92 12** or email access@grandtheatre.co.uk Schools, Care Homes & other group bookings that require Outreach concessions can contact a member of the Outreach team on **01902 57 33 20** or via email - access@grandtheatre.co.uk



The Ocean at the End of the Lane	Wed 27 Sep '23 - 7.30pm	Everybody's Talking About Jamie	Sat 27 Jan '24 - 2.30pm
The Ocean at the End of the Lane	Thu 28 Sep '23 - 2.30pm	Rocky Horror Show	Sat 10 Feb '24 - 5.30pm
The Ocean at the End of the Lane	Sat 30 Sep '23 - 2.30pm	2:22 A Ghost Story	Thu 22 Feb '24 - 7.30pm
The Ocean at the End of the Lane	Sat 30 Sep '23 - 2.30pm	2:22 A Ghost Story	Sat 24 Feb '24 - 2.30pm
Annie	Thu 12 Oct '23 - 7.30pm	SIX	Sat 2 Mar '24 - 4pm
Annie	Sat 14 Oct '23 - 2.30pm	Bonnie & Clyde	Thu 7 Mar '24 - 7.30pm
Matthew Bourne's Romeo and Juliet	Sat 21 Oct '23 - 2.30pm	Bonnie & Clyde	Sat 9 Mar '24 - 2.30pm
Peter Pan Goes Wrong	Thu 2 Nov '23 - 7.30pm	Awful Auntie	Fri 29 Mar '24 - 6.30pm
Peter Pan Goes Wrong	Sat 4 Nov '23 - 2.30pm	Life Of Pi	Sat 27 Apr '24 - 2.30pm
Jesus Christ Superstar	Thu 16 Nov '23 - 7.30pm	Madagascar	Sun 2 Jun '24 - 11am
Jesus Christ Superstar	Sat 18 Nov '23 - 2.30pm	The Mousetrap	Sat 29 Jun '24 - 2.30pm
Snow White	Thu 14 Dec '23 - 2.30pm	Unfortunate	Sat 13 Jul '24 - 2.30pm
Snow White	Thu 14 Dec '23 - 7pm	The Wizard Of Oz	Thu 1 Aug '24 - 7.30pm
Snow White	Fri 15 Dec '23 - 11am	The Wizard Of Oz	Sat 3 Aug '24 - 2.30pm
Snow White	Sat 16 Dec '23 - 11am	An Officer & A Gentleman	Thu 26 Sep '24 - 7.30pm
Snow White	Wed 20 Dec '23 - 7pm	An Officer & A Gentleman	Sat 28 Sep '24 - 2.30pm
Snow White	Sat 6 Jan '24 - 1pm	Come From Away	Sat 9 Nov '24 - 2.30pm
Everybody's Talking About Jamie	Thu 25 Jan '24 - 7.30pm		

Want to have your say?

Our Active Access group meets quarterly to discuss accessibility in partnership with The Arena Theatre. Contact access@grandtheatre.co.uk to join the conversation!



Frankie Goes To Bollywood

Tuesday 11 - Saturday 15 June '24

Evenings at 7.30pm,
Wednesday & Saturday matinees at 2.30pm

Rifco Theatre Company, Watford Palace Theatre and HOME Manchester presents **FRANKIE GOES TO BOLLYWOOD**. A billion colour musical.

Concept and Book by **Pravesh Kumar**

Songs and Music by **Niraj Chag**

Songs and Lyrics by **Tasha Taylor Johnson**

Get swept away into the dazzling world of Bollywood!

Frankie never wanted to be a star, she just wanted a family - and after a chance encounter with an up-and-coming director, she finds herself transported to Bollywood.

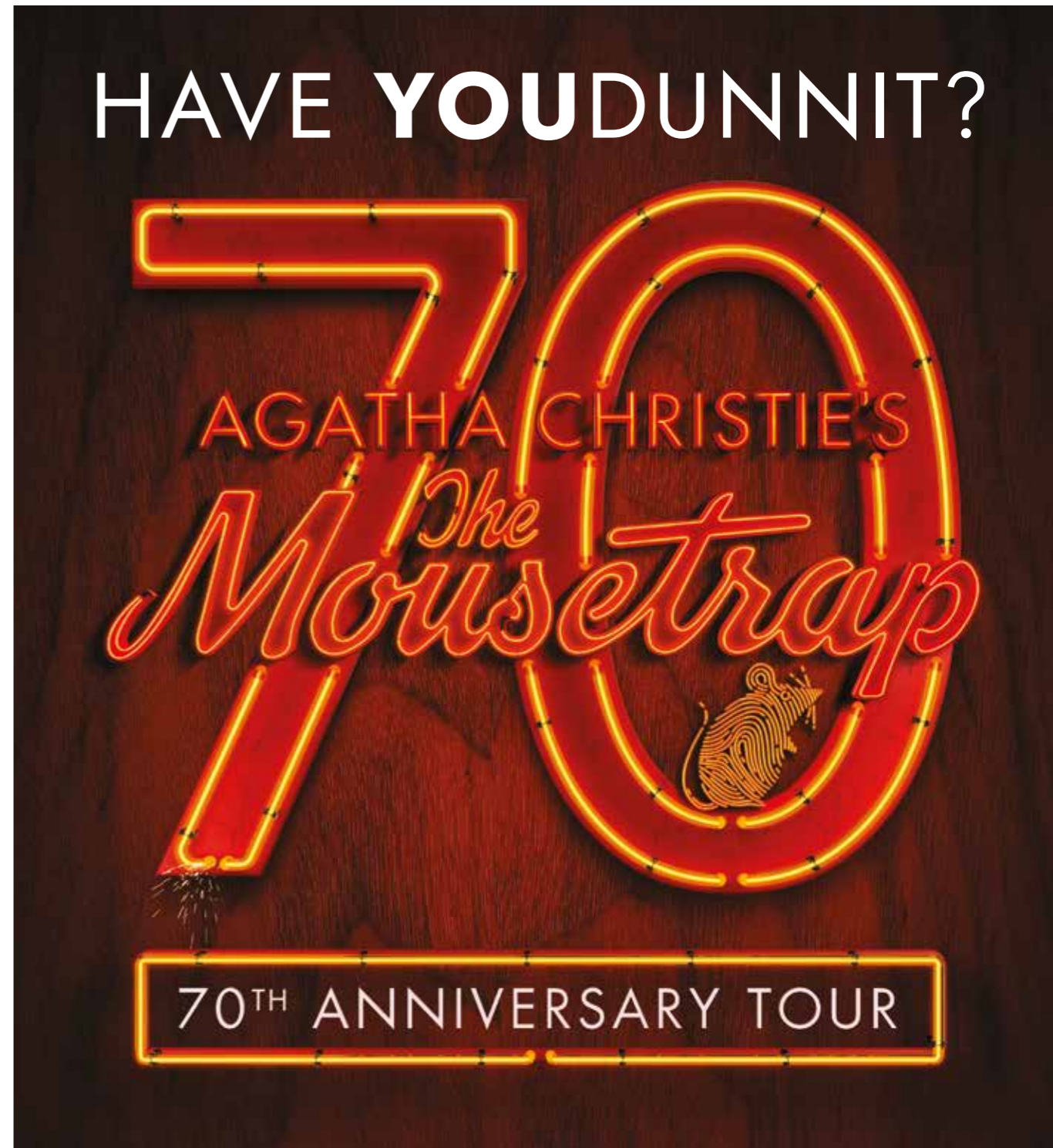
As she climbs the sparkling staircase of stardom, Frankie has to confront what she is willing to do for fame and fortune. Can she stay in the Bollywood family and still be true to herself?

Inspired by real stories of British women who have been caught in the spotlight of the biggest film industry in the world, **FRANKIE GOES TO BOLLYWOOD** is a breathtakingly colourful journey of romance, sweeping songs and vibrant dance.

Amidst the heroes and the villains, the costumes and the spectacle, get ready for this tale of being British in Bollywood.



**Tickets
from £16.75***



The Mousetrap

Tuesday 25 - Saturday 29 June '24

Evenings at 7.30pm,
Wednesday & Saturday matinees at 2.30pm

Agatha Christie's **THE MOUSETRAP** is the world's longest-running play. This thrilling West End production is the genre-defining murder mystery from the best-selling novelist of all time... case closed!

As news spreads of a murder in London, a group of seven strangers find themselves snowed in at a remote countryside guesthouse. When a police sergeant arrives, the guests discover – to their horror – that a killer is in their midst! Which one is the murderer? Who will be their next victim? Can you solve this world-famous mystery for yourself?

Now celebrating 70 years, Agatha Christie's **THE MOUSETRAP** has kept millions of people from every corner of the globe on the edge of their seats. Could you be next?

Tickets from £14.75*





Making Employment Thrive.

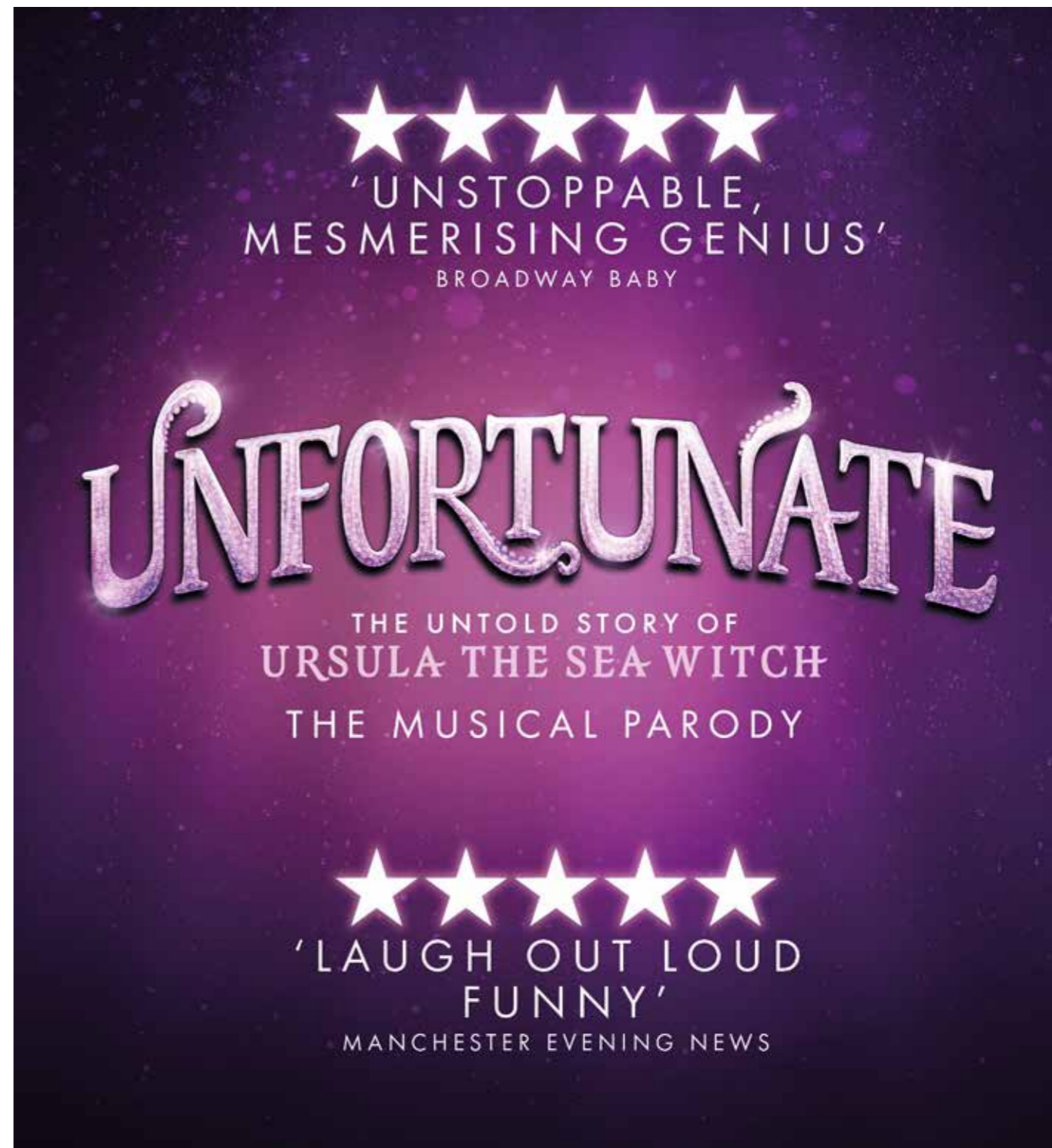
Delivering Permanent, Temporary and Contract solutions throughout the West Midlands

Permanent | Contract | Temporary

- Commercial
- Accounts & Finance
- Sales & Marketing
- Industrial
- Human Resources
- Skilled & Technical

Our expert consultants are on hand to help, Contact us on:
T: 01384 451 880 E: info@metrecruitment.com

“Helping clients, candidates and colleagues alike to thrive in their working environment, is at the centre of everything we do.”



Unfortunate

Thursday 11 - Sunday 14 July '24

Thursday & Friday at 7.30pm,
 Saturday at 2.30pm & 7.30pm,
 Sunday at 1pm & 5pm

Disney villain. Octo-woman. Plus-size icon.

Fresh from complete sell out runs at the Edinburgh Fringe and around the UK comes this critically acclaimed smash hit parody musical. **UNFORTUNATE** is coming to Wolverhampton and things are gonna get wet.

Join everyone's favourite Disney Diva, Ursula, as she gives her take on what *really* happened all those years ago under the sea. With an original hot pop soundtrack and trademark filthy humour, it's time to take the plunge and dive into this year's hottest night out.

Cruella told her side, and Maleficent's had her moment. Now the legendary queer queen is ready to spill, in this tell-all tale of sex, sorcery and suckers.

Age Guidance: 16+ Contains strong language, partial nudity, scenes of a sexual nature and flashing lights.

Tickets from £16*



Relaxed PERFORMANCES

What is a relaxed performance?

A Relaxed Performance is specifically designed and adapted for people who find regular performance settings difficult and families with children under 5. For more information visit the website or email access@grandtheatre.co.uk

We adapt the performance by reducing the volume and removing special effects such as pyrotechnics, flashing lights and loud bangs. The auditorium has an open doors policy and the rules are relaxed so more movement and noise is to be expected. A sensory room, quiet spaces and large changing area are also available in our Front of House areas.



The Ocean At The End Of The Lane
Thu 28 Sep '23 - 2.30pm



Snow White
Fri 15 Dec '23 - 11am
Sat 16 Dec '23 - 11am



Madagascar
Sun 2 Jun '24 - 11am

WOLVERHAMPTON
GRAND
THEATRE

BOOK ONLINE AT
GRANDTHEATRE.CO.UK
BOX OFFICE:
01902 42 92 12

Ministry Of Science Live - Science Saved The World

Sunday 21 July '24 - 3.30pm

This year saw science lead the way in getting our lives back to normal. Now, the UK's favourite science team are back and more explosive than ever! Join our presenters as they dive deep into the world of science and look at how science shapes the modern world we live in with a few loud bangs along the way!

They'll take an anarchic approach to science communication whilst looking at the scientists, engineers and inventors who have shaped the modern world that we live in whilst proving that each and everyone of you have the ability to change our world for the better! Expect 20ft LIQUID NITROGEN clouds, exploding OXYGEN & HYDROGEN balloons, FIRE TORNADOS, HYDROGEN bottle rockets, ignited METHANE and even a self-built Hovercraft!

100% Educational. 200% Entertaining. 300% Explosive. 400% Fun.

Tickets from £14.25*



Sweet Caroline

Wednesday 24 July '24 - 7.30pm

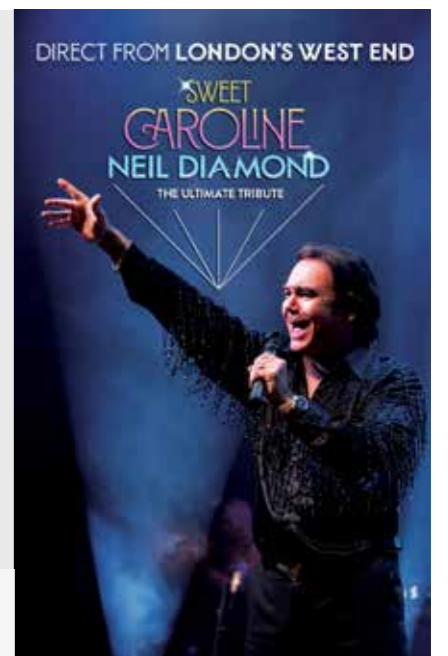
Direct from London's Adelphi Theatre... It's time for that night out you have been dreaming of – with *Stars in Their Eyes* Gary Ryan.

Featuring 50 years of the greatest music ever written, enjoy all the hits *Forever In Blue Jeans*, *America*, *Love On The Rocks*, *Song Sung Blue*, *Hello Again*, *Cracklin' Rosie*, *I Am...I Said*, *Beautiful Noise* and, of course, *Sweet Caroline*.

The good times never seemed so good!

This is a tribute show and is no way affiliated with any original artists/estates/management companies or similar shows. *Promoter reserves the right to alter the programme.*

Tickets from £18.50*



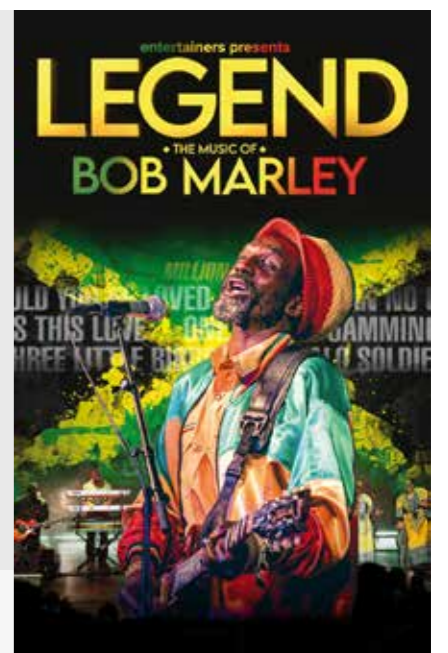
Legend - The Music Of Bob Marley

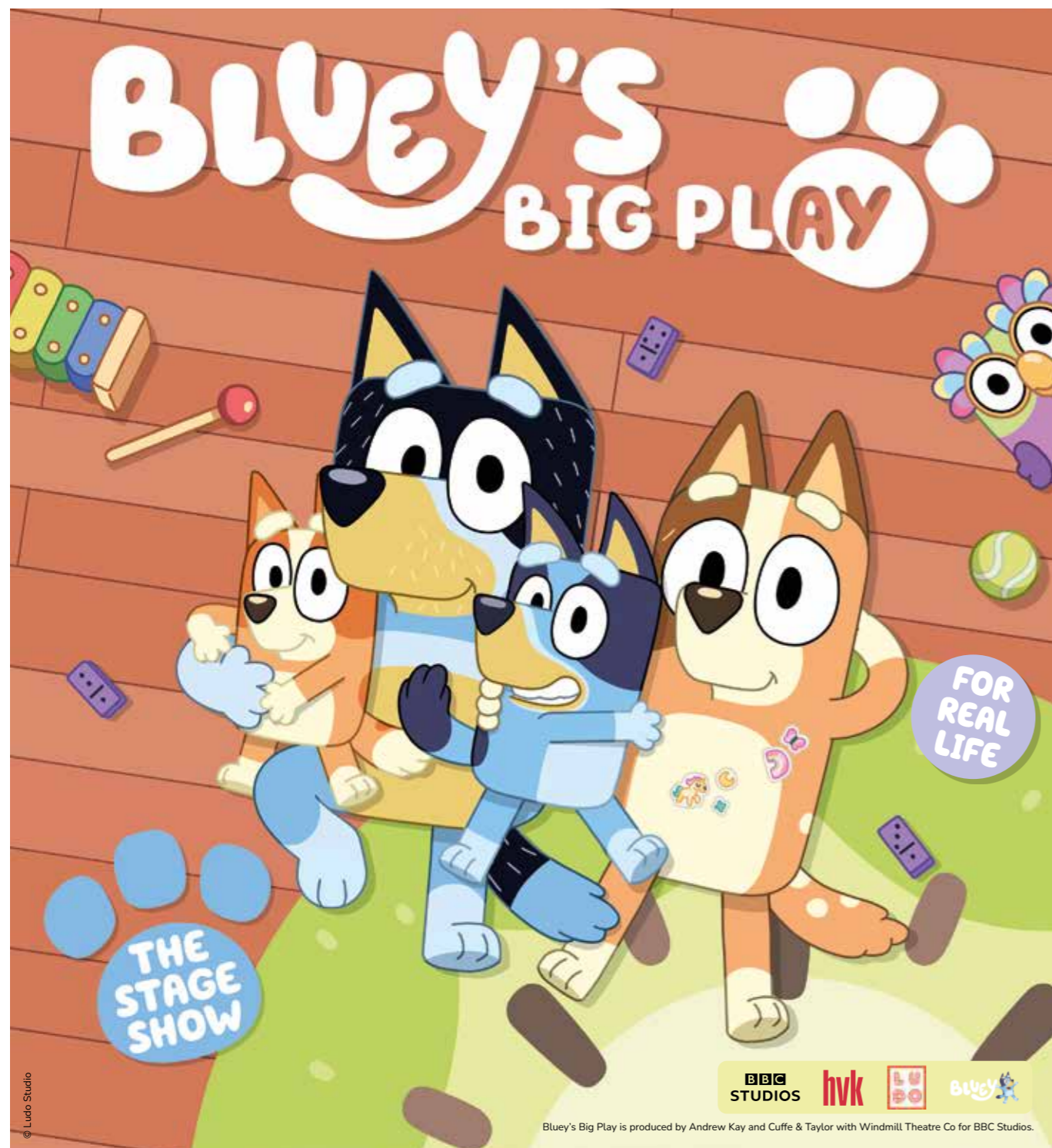
Thursday 25 July '24 - 7.30pm

When you think reggae, there is only one name that comes to mind. The legend that was **Bob Marley**. **LEGEND – THE MUSIC OF BOB MARLEY** is an unforgettable evening celebrating this musical icon in one fantastic stage show extravaganza. Combining his superb, distinctive vocals with flawless musicianship, a supremely talented cast recreate the timeless hits *Could You Be Loved*, *Is This Love*, *One Love*, *No Woman No Cry*, *Three Little Birds*, *Jammin'*, *Buffalo Soldier*, *Stir It Up*, *Get Up Stand Up*, *Exodus*, *Waiting in Vain*, *Satisfy My Soul*, *Iron Lion Zion*, *I Shot the Sheriff* and many more reggae classics.

It is a two-hour spectacular, showcasing the magic of Marley. It captures the charisma and culture of an icon gone too soon.

Tickets from £18.50*





Bluey's Big Play

Saturday 27 - Sunday 28 July '24

Saturday at 10am, 1pm & 4pm,
Sunday at 10am & 1pm

When Dad feels like a little bit of Sunday afternoon time out, Bluey and Bingo have other plans! Join them as they pull out all of the games and cleverness at their disposal to get Dad off that bean bag.

BLUEY'S BIG PLAY is a brand-new theatrical adaptation of the Emmy® award-winning children's television series, with an original story by *Bluey* creator Joe Brumm, and new music by *Bluey* composer, Joff Bush.

Join the Heelers in their first live theatre show made just for you, featuring brilliantly created puppets, this is Bluey as you've never seen it before, brought to real life in this UK premiere.

BLUEY'S BIG PLAY is produced by Andrew Kay and Cuffe & Taylor with Windmill Theatre Co for BBC Studios.

Tickets from £15.75*



The Wizard Of Oz

Tuesday 30 July - Sunday 4 August '24

Tuesday - Saturday at 7.30pm,
Wednesday, Saturday & Sunday at 2.30pm

Direct from The London Palladium, the sensational new production of one of the world's most beloved musicals comes to Wolverhampton.

Featuring the iconic original score from the Oscar-winning MGM film including *Over The Rainbow*, *Follow The Yellow Brick Road* and *We're Off To See The Wizard* with additional songs from Andrew Lloyd Webber and Tim Rice, this spectacular production of **THE WIZARD OF OZ** will be a truly magical experience for all the family.

Join Dorothy, Toto, and friends on an unforgettable adventure down the yellow brick road to the merry old land of Oz.

There's no place like Wolverhampton this July.

Tickets from £15*



PUTTING YOUR
BUSINESS IN THE

SPOTLIGHT



The Grand Theatre can help put your business in the spotlight.

With over 250,000 visitors per year we have a captive audience for you to promote your brand at one of Wolverhampton's most iconic venues.

Our Advertising, Sponsorship and Business Club Membership packages can be tailored to suit your requirements. Our Commercial & Events team is here to create a partnership that suits your objectives and budget. We offer a wealth of opportunities for businesses from all sectors.

Packages include premium show tickets, branding, marketing opportunities across

multiple digital and printed platforms, advertising opportunities, PR opportunities and staff engagement.

As a registered charity your membership can also fulfil corporate social responsibility objectives as it supports the Grand's ongoing work, enabling us to run projects for the community

We have private event space where you can host a meeting or event and entertain your guests with choices ranging from a relaxed buffet to an intimate private dinner, the Grand Theatre combines a range of corporate entertainment choices with the opportunity to enjoy some of the UK's best live theatre.

OUR GRATEFUL THANKS TO OUR CURRENT GRAND THEATRE SPONSORS AND BUSINESS CLUB MEMBERS

SPONSORS



GRAND EXECUTIVE MEMBERS



GRAND PREMIER MEMBERS



WHAT OUR MEMBERS SAY:

"Working with the Grand Theatre enables us to give something back to the community in which we operate, which is a really important part of what we do at FBCMB."

*Laura Jones, Marketing Manager,
FBC Manby Bowdler*

"We have been members of the Business Club for three years and enjoy regular theatre trips with our staff and clients who appreciate the splendour and entertainment on our doorstep. We happily continue to support this great charity, as it's not only a great fun thing to do, but ensures its lifetime for future generations to enjoy."

*Debra Lawrence, Director,
Lawrence Cleaning Solutions*

"Wolverhampton Grand Theatre is a Jewel in the Crown for Wolverhampton and the Black Country - working with the team as a valued member of Black Country Chamber of Commerce is a privilege and delight."

The theatre is a fantastic asset to the night time economy in Wolverhampton and a great venue to use for business and corporate meetings, launches and promotions etc. Our Chamber has certainly made good use of the corporate facilities through being a member of their Business Club and we have met some fantastic people and businesses along the way."

*Gail Arnold, Head of Premium Membership,
Black Country Chamber of Commerce*

GRAND CLUB MEMBERS



General Information

WOLVERHAMPTON
GRAND
THEATRE

WOLVERHAMPTON
GRAND
THEATRE

Public Transport

The theatre is a three minute walk from Wolverhampton Rail Station and three minutes from Wolverhampton St George's Metro Station. The main Bus Station is a minute away. West Midlands Cycle Hire scheme have bicycle docks at the bus station, where you are able to hire or dock a bike for your journey.

Car Parking

Convenient car parks are situated at Broad Street, Piper's Row, Fryer Street and the train station car park at the station. PLEASE NOTE: You may need to allow extra time for parking on Wolves home match dates.

Purchasing Tickets Online

Tickets can be purchased online 24 hours a day at grandtheatre.co.uk

By Telephone

Tickets can be purchased by telephone on 01902 42 92 12. Telephone lines are open Monday to Friday from 2pm - 6pm. Saturday & Sunday opening times will vary depending upon performance start times. Please email feedback@grandtheatre.co.uk for more information.

All telephone calls are answered and placed in an automatic queuing system, which ensures your call is dealt with in strict rotation. Please note, calls are recorded and may be used for training purposes.

In Person

On performance days, the Box Office will usually open 90 minutes prior to the performance start time for tickets sales and enquiries only. The Box Office is closed to in person counter sales on non-performance days. Please visit grandtheatre.co.uk/whats-on for an up to date list of performance days.

Methods of Payment

The theatre accepts payment Visa Credit and Debit cards, Mastercard, Maestro, Solo, Grand Theatre credit, Grand Theatre gift vouchers, Theatre Tokens or cash.

Booking Fee

A £4 fee applies to all bookings, irrespective of the method of payment.

E-Tickets

You can opt to receive your tickets as e-tickets when booking. E-Tickets can be presented on your mobile device when attending the theatre, or you can choose to print your e-ticket at home and present it as a paper copy when attending.

Postage

If you would like hard copies of your tickets posting out to you there will be a £1 charge.

Refunds, Exchanges and Conditions Of Sale

Full terms and conditions of purchase can be found at grandtheatre.co.uk/terms-conditions-of-sale

Your Comfort and Safety

Please note that some productions may include smoking on stage.

In the interest of our patrons, children under three years of age and babes in arms are not usually admitted. Exceptions may be made for certain shows. Where applicable this will be shown on the show web page. Please check with Box Office whether babes in arms tickets will be available before making your booking.

Please turn your mobile phone off in the auditorium. Smoking and the use of vaping equipment are strictly prohibited in all areas of the theatre.

Please note bag searches are in operation at all performances.

On certain productions/performance additional security may be in place.

Production, ticket and performance information is correct at the time of going to press. The theatre reserves the right to make alterations as necessary.

Wolverhampton Grand Theatre (1982) Ltd, Lichfield Street, Wolverhampton WV1 1DE Charity No. 515154. Registered in England No 01731876.

Also Booking

BOOK ONLINE AT
GRANDTHEATRE.CO.UK

BOX OFFICE:
01902 42 92 12



MON 23 - SAT 28 SEP '24

AN OFFICER
AND A GENTLEMAN

DIRECT FROM THE WEST END

COME
FROM
AWAY

THE AWARD-WINNING MUSICAL
THAT WELCOMES THE WORLD

SUN 29 SEP '24
CHRIS MCCAUSLAND: YONKS!

TUE 5 - SAT 9 NOV '24
COME FROM AWAY



The Times

'ONE OF THE MOST STUNNING SHOWS I HAVE EVER SEEN'

Time Out



The Guardian



Daily Express



Sunday Express



Daily Mail



The Observer



Sunday Times



Mail on Sunday



LIFE OF PI

WINNER OF EVERY MAJOR PLAY AWARD INCLUDING 5 OLIVIERS



WOLVERHAMPTON
GRAND
THEATRE

MON 22 - SAT 27 APRIL 2024

01902 42 92 12 grandtheatre.co.uk