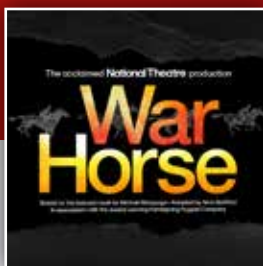


CREATIVE LEARNING

YOUR GUIDE TO EDUCATION
AT THE GRAND THEATRE



War Horse

GALLOPING TO
WOLVERHAMPTON
IN 2025!



Beauty And The Beast

A TALE AS OLD AS
PANTOMIME



& Juliet

THERE'S LIFE AFTER
ROMEO

WELCOME



Welcome to Wolverhampton Grand Theatre's Creative Learning Brochure.

We're delighted to share with you the exciting shows we have in our upcoming programme. There are a number of shows with fantastic school offers which include; **& JULIET** our pantomime **BEAUTY AND THE BEAST** and **WAR HORSE**.

As well as these fantastic shows we'd like to share with you our other educational offerings which include, Intro to Panto, Theatre Tours, Maths Trails, Career Talks and our school partnership packages. We also have a great interview with Shannon Wright our Head of Front of House, who gives a fantastic and interesting insight into working here at Wolverhampton Grand Theatre.

All of the above and more can be discovered in this brochure.

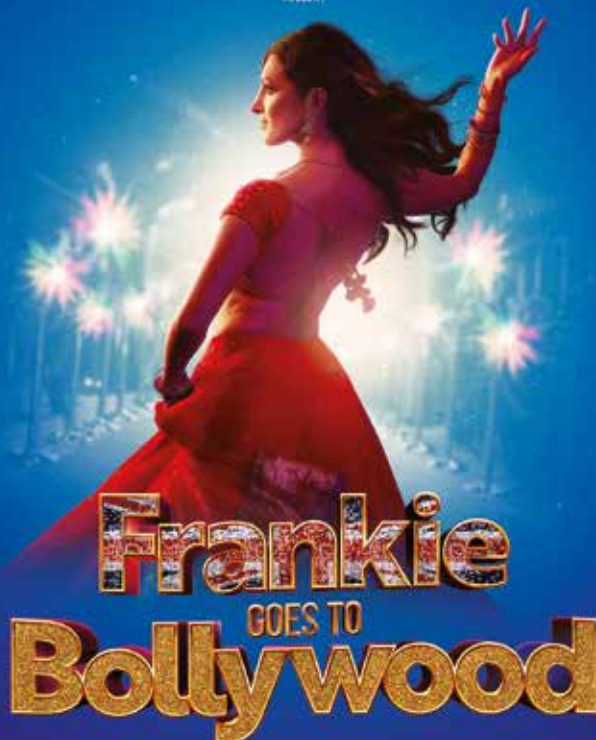
We hope to welcome you soon to the Grand Theatre.

James Collins, Outreach Manager - Creative Learning

CONTENTS

03	FRANKIE GOES TO BOLLYWOOD	12	PRIDE AND PREJUDICE* (*SORT OF)
04	WONDER BOY	13	WAR HORSE
05	INTRO TO PANTO	14	SCHOOL PARTNERSHIP PACKAGES
06	BEAUTY AND THE BEAST	15	YOUTH THEATRE
08	COMMUNITY PANTO PROJECT	16	POST SHOW Q&A'S AND CAREER TALKS
09	THEATRE TOURS, MATHS TRAILS & NATIONAL THEATRE COLLECTIONS	17	MEMBERSHIP SCHEMES
10	& JULIET	18	STAGES SUMMER SCHOOL
11	SPOTLIGHT ON OUR HEAD OF FRONT OF HOUSE	19	ALSO BOOKING

FROM THE MAKERS OF **BRITAIN'S GOT BHANGRA**
RIFCO THEATRE COMPANY, WATFORD PALACE THEATRE AND HOME MANCHESTER
PRESENT



A BILLION COLOUR MUSICAL

CONCEPT AND BOOK BY **PRAVESH KUMAR** | SONGS AND MUSIC BY **NIRAJ CHAG** | SONGS AND LYRICS BY **TASHA TAYLOR JOHNSON**

Frankie Goes To Bollywood

Tuesday 11 - Saturday 15 June '24

Evenings at 7.30pm

Wednesday & Saturday matinees at 2.30pm

Rifco Theatre Company, Watford Palace Theatre and HOME Manchester presents **FRANKIE GOES TO BOLLYWOOD**.
A billion colour musical.

Concept and Book by **Pravesh Kumar** | Songs and Music by **Niraj Chag** |
Songs and Lyrics by **Tasha Taylor Johnson**.

Get swept away into the dazzling world of Bollywood!

Frankie never wanted to be a star, she just wanted a family – and after a chance encounter with an up-and-coming director, she finds herself transported to Bollywood.

As she climbs the sparkling staircase of stardom, Frankie has to confront what she is willing to do for fame and fortune. Can she stay in the Bollywood family and still be true to herself?

Inspired by real stories of British women who have been caught in the spotlight of the biggest film industry in the world, **FRANKIE GOES TO BOLLYWOOD** is a breathtakingly colourful journey of romance, sweeping songs and vibrant dance.

Amidst the heroes and the villains, the costumes and the spectacle, get ready for this tale of being British in Bollywood.



FRIENDS
OF THE GRAND



Schools Ticket Offer £15*

Plus every 11th seat free for
supervising adult. Excludes
Fri & Sat AND gold seats

Age Guidance: 8+



Audio
Described

WHAT USE IS A BOY WHO CAN'T SAY HIS OWN NAME?



“A dream of a production... some kind of wonderful”

The Guardian

WONDER BOY

WRITTEN BY
ROSS WILLIS

DIRECTED BY
SALLY COOKSON



Wonder Boy

Thursday 3 - Saturday 5 October '24

Evenings at 7.30pm, Saturday matinee at 2.30pm

Chilled Performance: Saturday at 2.30pm

Integrated Captioning at all performances.

Olivier Award-winner Sally Cookson (*A Monster Calls*) directs the critically acclaimed Bristol Old Vic production of **WONDER BOY** by Ross Willis, a heart-warming and inspiring story about the power of communication.

Sonny is twelve. Living with a stammer, he's finding his way in a world ruled by vicious vowels, confusing consonants, and let's not forget the biggest beast of them all – small talk.

Sonny's only friend is Captain Chatter, a comic book hero of his own creation, but in the real world language is power and Sonny must find a way to be heard. When cast in the school production of *Hamlet* by the Headteacher, he finds the real heroes are closer than he thinks.

Packed with playful humour, dazzling visuals and thrilling original music this innovative production includes live creative captioning on stage throughout.

Winner of the 2023 Writers' Guild Award for Best Play.

- ★★★★★ 'Audience roaring with laughter and love from the first minute'
Whats On Stage
- ★★★★★ 'An audaciously inventive, sparky yet sensitive, giddily enjoyable new play that deserves to be packed to the rafters'
The Guardian
- ★★★★★ 'Boudingly imaginative'
The Times



BSL
Interpreted



Audio
Described



Chilled
Performance



Captioned
Performance



FRIENDS
OF THE GRAND



1025



FIRST
CALL



family
ticket

Schools Ticket Offer £15*

£15 face value, plus every 11th seat free for supervising adult. Excludes Fri & Sat AND gold seats

Age Guidance: 12+
Strong Language
Throughout



Bring the magic of pantomime to your school!

For many, pantomime is the spark that lights a lifelong love of theatre. As a theatre rooted in the local community, we understand that not every child has the opportunity to go to a pantomime, so we've made it part of our mission to take pantomime to as many children as we can.

Every year our Intro to Panto roadshow visits schools throughout Wolverhampton and the Black Country, bringing the magic of live theatre to your school hall. To date we have performed to over 30,000 children. For many it's their first experience of live theatre, but the memory lasts forever.

Our Intro To Panto roadshow is split into two halves, the first 30 minutes is an interactive workshop led by our three performers and the Grand Theatre's resident Panto Dame, **Ian Adams**. We explore the history, jokes, routines and songs of pantomime – this is more suitable for years 4, 5 & 6.

There is then a 20 minute break

followed by a 40 minute production of that year's Grand Theatre pantomime, which is suitable for the whole school.

The workshop and performance are fitted around a morning or afternoon break-time.

We're committed to reaching as many children as possible, so have priced the Intro to Panto roadshow as competitively as possible. Each performance is priced at £300+VAT. Schools who book two performances on the same day will pay £500+VAT (Please note, most schools can claim VAT back).

Our performers are all DBS checked, and accompanied by a member of Grand Theatre staff at all performances.

Please keep an eye on our website for updates regarding our 2024 tour.

If you have any questions regarding this year's tour or would like to book please contact James Collins, Outreach Manager – Creative Learning by email jamesc@grandtheatre.co.uk

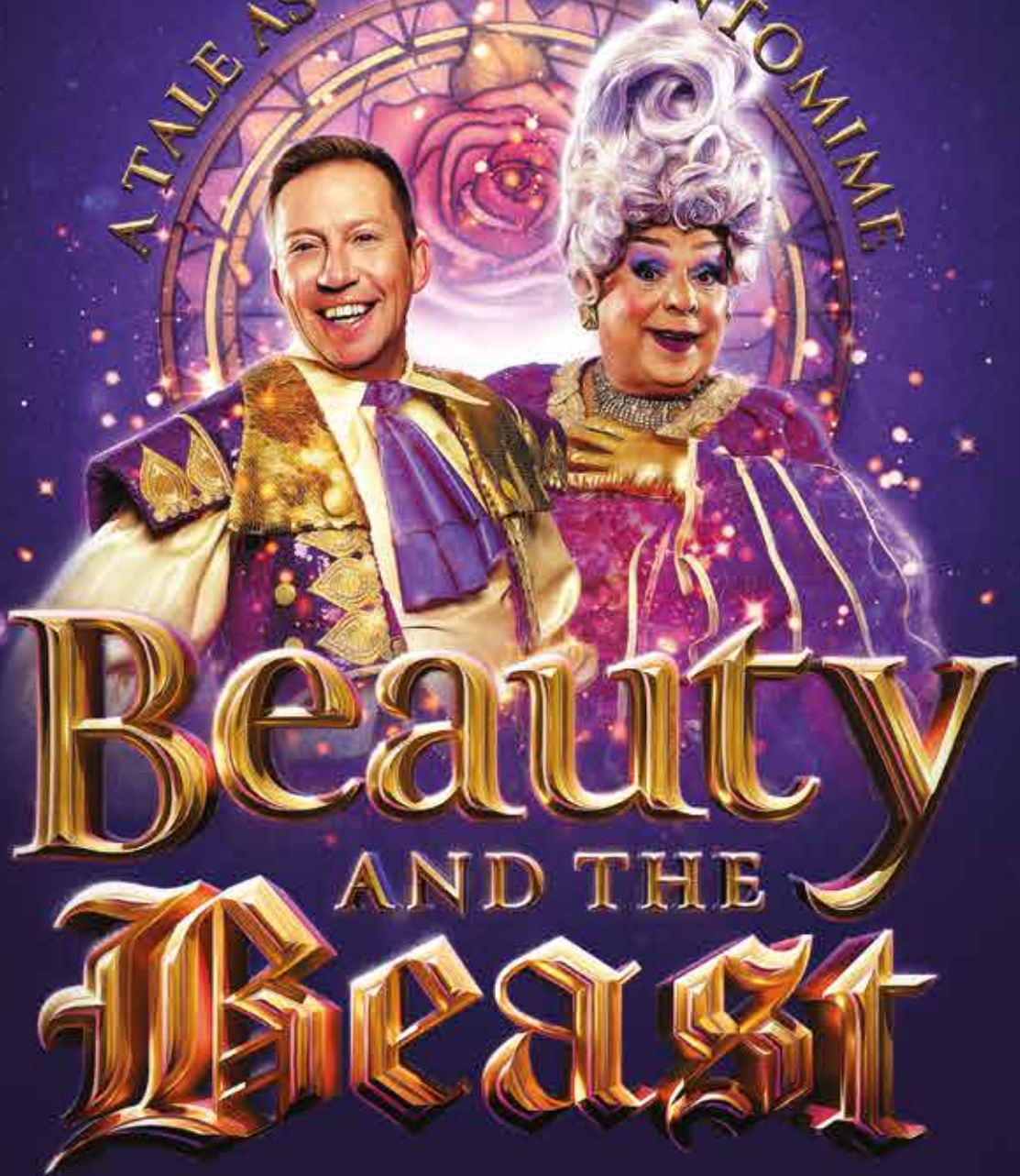


WOLVERHAMPTON GRAND THEATRE PRESENTS

TAM RYAN IAN ADAMS

IN

A TALE AS OLD AS PANTOMIME



SAT 30 NOV 2024 – SUN 5 JAN 2025

WOLVERHAMPTON
GRAND
THEATRE

GRANDTHEATRE.CO.UK

#WOLVESGRANDPANTO



A TALE AS OLD AS PANTOMIME

Join us as we journey into an enchanted castle with Princess Beauty who discovers a host of magical characters cursed under the spell of an evil Queen, including a fearsome beast!

Can she see him for more than a monster? And will he learn to love another? Join us for an ultimate adventure to turn him back into a Prince before the final petal falls from an enchanted rose.

Panto favourites **Tam Ryan** and **Ian Adams** return with more star-studded cast to be announced!

TICKETS FROM £16.50*

GOLD SHOWS

Group Discounts:

Parties of 50+ / £3 off all ticket prices
(excluding gold seats)

PURPLE SHOWS

Group Discounts:

Parties of 50+ / £6 off all ticket prices
Parties of 100+ / £7 off all ticket prices

RED SHOWS

General Concessions:

£6 off all ticket prices

Family Ticket:

4 tickets £99* (to include a minimum of 1 adult and 1 child)

Valid on all red performances until 13 Dec

Group Discounts:

Parties of 20+: £6 off all ticket prices
Parties of 50+: £7 off all ticket prices
Parties of 100+: £8 off all ticket prices

School Parties:

As Group Discounts plus 1 free supervising adult for every 10 students

*A £4 booking fee applies to all purchases.

GREEN SHOWS

General Concessions:

£5.50 off all tickets

Group Discounts:

Parties of 10+ / £7.50 off all tickets

School Parties:

£14.50* plus 1 free supervising adult for every 10 students

FRIENDS OF THE GRAND

15% off all ticket prices at all green, red & purple shows (excludes relaxed performances on 12, 13 & 14 December at 11am)

FIRST CALL

£42* for First Call member and accompanying adult on green, red & purple shows (excludes relaxed performances on 12, 13 & 14 December at 11am). Excludes gold seats.

*A £4 booking fee applies to all purchases.

SAT	30 th	NOV 2024	2.30pm	7pm
SUN	01 st	DEC 2024	1pm	5pm
MON	02 nd	DEC 2024	NO PERFORMANCES	
TUE	03 rd	DEC 2024	10.30am	2.30pm
WED	04 th	DEC 2024	2.30pm	7pm
THU	05 th	DEC 2024	2.30pm	7pm
FRI	06 th	DEC 2024	11am	6pm
SAT	07 th	DEC 2024	2.30pm	7pm
SUN	08 th	DEC 2024	11am	3pm
MON	09 th	DEC 2024	NO PERFORMANCES	
TUE	10 th	DEC 2024	2.30pm	7pm
WED	11 th	DEC 2024	2.30pm	7pm
THU	12 th	DEC 2024	11am	7pm
FRI	13 th	DEC 2024	11am	6pm
SAT	14 th	DEC 2024	11am	5pm
SUN	15 th	DEC 2024	1pm	5pm
MON	16 th	DEC 2024	NO PERFORMANCES	
TUE	17 th	DEC 2024	10.30am	2.30pm
WED	18 th	DEC 2024	2.30pm	7pm
THU	19 th	DEC 2024	NO PERFORMANCES	
FRI	20 th	DEC 2024	2.30pm	7pm
SAT	21 st	DEC 2024	2.30pm	7pm
SUN	22 nd	DEC 2024	2.30pm	7pm
MON	23 rd	DEC 2024	2.30pm	7pm
TUE	24 th	DEC 2024	11am	3pm
WED	25 th	DEC 2024	NO PERFORMANCES	
THU	26 th	DEC 2024	1pm	5pm
FRI	27 th	DEC 2024	1pm	5pm
SAT	28 th	DEC 2024	2.30pm	7pm
SUN	29 th	DEC 2024	1pm	5pm
MON	30 th	DEC 2024	2.30pm	7pm
TUE	31 st	DEC 2024	11am	3pm
WED	01 st	JAN 2025	NO PERFORMANCES	
THU	02 nd	JAN 2025	2.30pm	7pm
FRI	03 rd	JAN 2025	1pm	5pm
SAT	04 th	JAN 2025	2.30pm	7pm
SUN	05 th	JAN 2025	11am	3pm



BRITISH SIGN LANGUAGE INTERPRETED PERFORMANCES

Wed 11 Dec at 2.30pm and 7pm
and Sat 4 Jan at 2.30pm



AUDIO DESCRIBED PERFORMANCES

Tue 10 and Wed 11 Dec at
2.30pm and Sat 4 Jan at 2.30pm



CAPTIONED PERFORMANCES

Wed 18 Dec at 7pm



RELAXED PERFORMANCES

Thu 12, Fri 13 and
Sat 14 Dec at 11am



COMMUNITY Panto PROJECT

Bringing the community together through the magic of pantomime.

For 2023/24's Community Pantomime Project, the Grand Theatre has once again collaborated with Heath House Studios. We decided to base this year's project on the theme of 'mirrors, castles, apples and woodland creatures', as they feature heavily in the Grand Theatre's 23/24 pantomime, *Snow White*.

The project began back in September, when Pauline from Heath House Studios visited 30 local community groups to deliver a free two hour textile workshop. During these workshops participants designed, stitched and crafted a variety of fantastic creations.

The exhibit, 'Reflections', features around 500 pieces of work, each one created by the participants involved. The display features the wonderful woodland landscape from *Snow White* as well as the Wicked Stepmother in her Dungeon surrounded by mirrors.

This project has been fully funded by Wolverhampton Grand Theatre as part of their charitable aims.

For more information on this project or to enquire about how your group can become involved in future projects, please contact our Outreach Manager for Creative Learning, James Collins – jamesc@grandtheatre.co.uk

A huge thank you to the following Community Groups involved:

Aaina Hub, African Caribbean Community Initiative, Black Country Mental Health, Brushstrokes Sandwell, Compton Care, Confederation of Bangladeshi Organisations, Gatis Youth Club, Jubilee Park Centre, Place of Warmth, Murray Hall Community Trust, Refugee & Migrant Centre Walsall, Refugee & Migrant Centre Wolverhampton, St Andrews CE Primary, The Way Youth Zone, Wednesbury Girl Guides Rainbow, Brownies, Guides & Rangers Groups, Wolverhampton Breast Care Action Group, Wolverhampton Creative Embroiderers, X2Y, Yemeni Community Association, Sandwell YCA Women's Wellbeing Network, YMCA, Wren's Nest Navigators.

Wolverhampton Grand Theatre and Heath House Studios would like to say a huge thank you to everyone who has helped and supported this amazing project.

PLEASE SCAN THE QR CODE FOR INFORMATION ON WAYS TO DONATE TO FUTURE PROJECTS AND TO SEE THE IMPACT YOUR SUPPORT MAKES





THEATRE TOURS, MATHS TRAILS & NATIONAL THEATRE COLLECTIONS

*Theatre Tours,
Maths Trails and fantastic
opportunities to watch
high quality National
Theatre Productions from
the comfort of your school.*

MATHS TRAIL

This is a fantastic opportunity for your students to have a tour of our theatre whilst putting their maths skills to the test!

Your students will learn how mathematical skills are used in daily life at the Grand Theatre covering topics such as, calculations, estimations, money and shapes.

Maths Trails generally take place at 10am weekdays and last approximately 2 hours. This includes going through the answers at the end of the trail.

Please contact jamesc@grandtheatre.co.uk to book a Maths Trail and for more information.

*Supervising staff free of charge.

THEATRE TOURS

Over the last five years, our education focused theatre tours have significantly grown in popularity.

The theatre tours are a fantastic opportunity for your students to visit our famous stage and to see the theatre from a performer's perspective, whilst learning about all aspects of the theatre industry.

During the tour, your students will learn about all of the jobs and careers available in the theatre industry, how we put shows on here and some of the theatre's history.

We visit the front of house areas, the stage, backstage areas and a dressing room.

School Theatre Tours generally take place at 10am weekdays and last approximately an hour and a half.

Please contact jamesc@grandtheatre.co.uk to book a Theatre Tour and for more information.

*Supervising staff free of charge.

NATIONAL THEATRE COLLECTIONS

As a partner of the National Theatre, The National Theatre Collection is free for UK State Secondary Schools and Further Education Colleges to stream online.

The National Theatre Collection not only gives you free access to 70 high quality filmed National Theatre productions, but you will also be able to access resources such as rehearsal notes and short films.

The collection also includes a bespoke offering for Primary Schools which features 8 age appropriate productions. Bringing stories to life on stage, they introduce younger children to the magic and spectacle of theatre. There are also tailored learning resources which supports creative learning across the curriculum.

**SCAN THE QR CODE
TO REGISTER!**

£5

PER
STUDENT*





Lorna Courtney and the cast of & JULIET Original Broadway Cast Photo Credit: Matthew Murphy

& Juliet

Monday 7 - Saturday 12 October '24

Evenings at 7.30pm,

Wednesday & Saturday matinees at 2.30pm

There is life after Romeo!

Get whisked away on a fabulous journey as Juliet ditches her famous ending for a fresh beginning and a second chance at life and love - her way. Created by the Emmy-winning writer from *Schitt's Creek*, this hilarious new musical flips the script on the greatest love story ever told and asks, what would happen next if Juliet didn't end it all over Romeo?

After a phenomenal run in London's West End, **& JULIET** is heading on a national tour and will have you singing, dancing and *ROARING* for more. Picking up three Olivier Awards and six WhatsOnStage Awards, **& JULIET** is 'Glorious...you won't find many better nights out' ★★★★★ *WhatsOnStage*.

Juliet's new story bursts to life through a playlist of pop anthems, including *Britney Spears'...Baby One More Time*, *Katy Perry's Roar*, and chart toppers *Since U Been Gone*, *It's My Life*, *Can't Stop the Feeling* and more — all from **Max Martin**, the genius songwriter/producer behind more #1 hits than any other artist this century, and his collaborators. Break free of the balcony scene and get into this romantic comedy that proves there's life after Romeo. The only thing tragic would be missing what is 'Easily the Best Musical of the Year'. — *Forbes*



FRIENDS
OF THE GRAND



Schools Ticket Offer £17.50*

Plus every 11th seat free for supervising adult. Excludes gold seats, VALID WED MATINEE ONLY



BSL
Interpreted



Audio
Described

Age Guidance: 10+



SPOTLIGHT ON OUR HEAD OF FRONT OF HOUSE

Shannon Wright

What is your role here at Wolverhampton Grand Theatre?

My role is Head of Front of House here at the theatre and I look after the Front of House areas, Front of House staff, and Security and Concierge where our focus is to ensure customers have a wonderful, memorable, and safe experience when they come to watch a show.

Tell us about the different kind of roles a member of the Front of House team might undertake during a typical show week?

The Front of House team can carry out such varied tasks that no shift is ever the same!

All staff are trained to work across the three main categories of the department: ushering in the auditorium (checking tickets, selling ice creams and monitoring audience behaviour); working behind our four bars (upholding our licensing law, upselling products, taking interval orders) and hosting for our VIP packages in our private booths and event rooms (setting up our different package offerings, greeting booth customers on arrival and giving top personal service, taking VIP guests to their show seats).

Alongside our focus on the customers experience, the safety of our audiences is of top priority. To achieve this, all Front of House staff are given fire evacuation, evacuation chair, first aid, and audience management training.

What advice would you give someone who would like to work in Front of House?

Teamwork is crucial for anyone wanting to work Front of House. The Front of House team are always working under time pressure to make sure all customers are ticket scanned and bag checked before entering the building, served at the bars, and have taken their seats for the show to start promptly – sometimes only having 30

minutes to achieve this for a full house!

As the theatre is spread across three floors, all staff are on radios for the duration of their shift to ensure everyone can communicate, assist, and support one another when necessary. To be a successful Front of House member, being able to function effectively in a team environment and have confidence to approach members of the public is my top advice.

Are there any opportunities for young people to experience the Grand Theatre's Front of House department?

You do have to be 18 years of age to work at the theatre, but we do have opportunities for under 18's to undertake work experience and shadow our ushers during a show.

You were Company Manager over the pantomime season for *Snow White*, how did you find this role, and how does it differ from your current role?

Company Managing the Grand's first produced pantomime was an incredible experience. Seeing the production come together from the rehearsal room to the stage was incredibly humbling as you learn first hand the amount of work and effort that's given from so many different people and departments to bring it in front of the public. A Company Manager's role is to look after the cast, making sure the company have all the information they need daily. This can range from what time they need to be in the building each day, to holding company meetings pre-show to discuss any issues, relaying any information they need to know for their shows that day such as accessible performances, marketing requests and any additional show notes. It's also the Company Manager's responsibility to ensure the cast are safe and happy while they are performing with us.

'Company managing the Grand's first produced pantomime was an incredible experience. Seeing the production come together from the rehearsal room to the stage was incredibly humbling.'

What's your favourite part of your job?

There are many highlights of being Front of House, such as working closely with an incredible team of people. However, one aspect of my job that is always a highlight and favourite to witness is the final moments during a finale or encore of a sold-out show; the cathartic moment when you're in the auditorium and watching 1200 people all experiencing the same emotion and level of escapism together.

If you could spend a week in a different department here at the Grand, which one would it be and why?

Backstage and Technical department. Front of House work so closely with backstage that it is very much its mirror department. I was also lucky enough to work closely with backstage over the pantomime season and witness how varied their job roles can be, and how much happens behind the scenes so I would love to develop this knowledge further.

What's your favourite production and why?

My favourite production would have to be *The Phantom of the Opera* as it was my first West End trip when I was 8 years old and will always hold huge sentimental value!



Pride & Prejudice*

by Isobel McArthur after Jane Austen (*sort of)

Pride And Prejudice* (*Sort Of)

Monday 14 - Saturday 19 October '24

Evenings at 7.30pm,

Wednesday & Saturday matinees at 2.30pm

Direct from its triumph in the West End where it won the Laurence Olivier Award for Best Comedy, **PRIDE AND PREJUDICE* (*SORT OF)** is a unique and audacious retelling of Jane Austen's most iconic love story.

Men, money and microphones will be fought over in this irreverent but affectionate adaptation where the stakes couldn't be higher when it comes to romance. This multi-award-winning production features a string of pop classics including *Young Hearts Run Free*, *Will You Love Me Tomorrow* and *You're So Vain*.

IT'S THE 1800S.

IT'S PARTY TIME.

LET THE RUTHLESS MATCHMAKING BEGIN.



FRIENDS
OF THE GRAND



Schools Ticket Offer £15*

Plus every 11th seat free for supervising adult. Excludes Fri & Sat AND gold seats

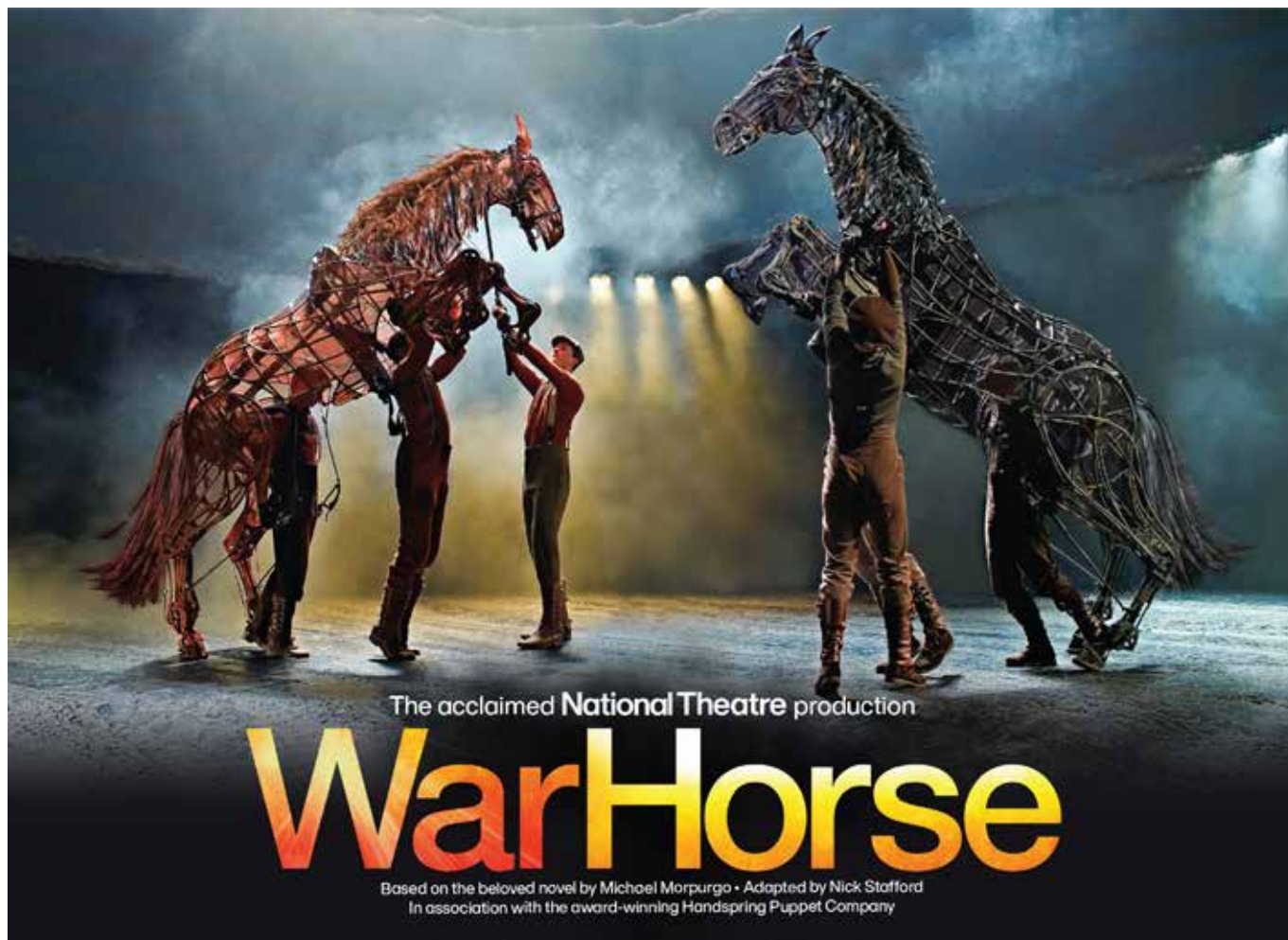
Age Guidance: 12+



Captioned
Performance



Audio
Described



War Horse

Tuesday 11 – Saturday 22 March '25

Week One: Tuesday - Saturday Evenings at 7.30pm.
Wednesday, Saturday and Sunday matinees at 2.30pm.

Week Two: Tuesday - Saturday Evenings at 7.30pm.
Thursday & Saturday matinees at 2.30pm.

THE GLOBAL PHENOMENON RETURNS

The **National Theatre's** acclaimed production returns in an all-new UK and Ireland tour. **WAR HORSE** is an unforgettable theatrical experience which takes audiences on an extraordinary journey from the fields of rural Devon to the trenches of First World War France. Based on the beloved novel by **Michael Morpurgo**, this powerfully moving and imaginative drama, filled with stirring music and songs, is a show of phenomenal inventiveness. At its heart are astonishing life-sized horses by **South Africa's Handspring Puppet Company**, who bring breathing, galloping, charging horses to thrilling life on stage.

At the outbreak of World War One, Joey, young Albert's beloved horse, is sold to the Cavalry and shipped to France. He's soon caught up in enemy fire, and fate takes him on an extraordinary journey, serving on both sides before finding himself alone in No Man's Land. Albert, who remained on his parents' Devon farm, cannot forget Joey. Though still not old enough to enlist, he embarks on a treacherous mission to find Joey and bring him home.

'Every child over 10 should see War Horse. It stretches that most under-used muscle, the imagination.' *The Times*



BSL
Interpreted



Audio
Described



CAP
Captioned
Performance



FRIENDS
OF THE GRAND



Schools Ticket Offer £25*

Plus every 11th seat free for supervising adults. Excludes Friday, Saturday and Sunday performances AND gold seats. Schools can book from May 15 2024.

Age Guidance: 10+

SCHOOL PARTNERSHIP

PACKAGES

Wolverhampton Grand Theatre's Schools Partnership Packages are a way for the theatre to develop a mutually beneficial relationship between the theatre and local schools. We aim to offer all young audiences the opportunity to experience live theatre to help foster a new generation of theatregoers. To help assist schools in making theatre accessible for their students we have included free student tickets and a further discount (up to 20% off) on school rate tickets available during the year long partnership.

We understand the pressures that schools face to ensure that educational activities link seamlessly with a programme of studies, which is why we have included workshops and theatre tours that can be tailored to fit with the curriculum as part of the partner membership packages.



£2500

CENTRE STAGE

- 120 student tickets per year*, up to 12 free accompanying teacher seats
- 20% off all school rate tickets per year*
- Cast/creatives Q&A for 1 show (subject to availability)
- Two theatre tours tailored to your students' needs i.e. career focused, history tour, maths focused (primary) etc. Maximum 30 students per tour
- Two workshops delivered by a professional drama practitioner



£1750

UPSTAGE

- 90 student tickets per year*, up to 9 free accompanying teacher seats
- 15% off all school rate tickets per year*
- Cast/creatives Q&A for 1 show (subject to availability)
- Two theatre tours tailored to your students' needs i.e. career focused, history tour, maths focused (primary) etc. Maximum 30 students per tour
- One workshop delivered by a professional drama practitioner



£1150

DOWNSTAGE

- 60 student tickets per year*, up to 6 free accompanying teacher seats
- 10% off all school rate tickets per year*
- One theatre tour tailored to your students' needs i.e. career focused, history tour, maths focused (primary) etc. Maximum 30 students per tour
- One workshop delivered by a professional drama practitioner

If you are interested in the above partnership packages or would like to discuss additional partnership options please contact James Collins, Outreach Manager - Creative Learning, jamesc@grandtheatre.co.uk or call 01902 57 33 20.



GRAND
YOUTH THEATRE
ARENA

YOUTH THEATRE

Discover a wonderful world of Drama with our Grand Arena Youth Theatre.

Grand Arena Youth Theatre, in collaboration with the Arena Theatre, offers young people a chance to explore the world of stage drama in a fun and friendly environment.

Whether you've never acted before or want to improve your existing skills, our professional practitioner will teach you drama techniques to take your acting talents to the next level, everything from improvisation through to physical theatre.

Since the group started, members have produced a variety of shows. The most recent Junior's show being in June 2023 when our

members performed *Jack, Jill and the Giant Beanstalk*, written by Ian Adams and adapted by Fran Richards, this production was performed at the Arena Theatre, Wolverhampton and in February 2024, our Senior members performed *The IT*, written by Vivienne Franzmann.

The weekly Grand Arena Youth Theatre workshops take place on Monday evenings at the Arena Theatre on Wulfruna Street, from 6pm – 7.30pm for Juniors (aged 9 – 13) and 8pm – 9.30pm for Seniors (aged 14 – 17).

The year begins in September and ends the following July and is split into 3 terms: Autumn, Spring and Summer. All workshops take place every Monday, with the exception of school and bank holidays.

For more information and details of how to be placed on our waiting list, please contact James Collins (Outreach Manager - Creative Learning) at jamesc@grandtheatre.co.uk





POST SHOW

Q & A'S

& CAREER TALKS

POST SHOW Q&A'S

Over the last few years our Post Show Q&A's have become increasingly more popular with over 400 audience members attending in some cases. Q&A's generally take place on Thursday evenings, however, for any education related productions we always endeavour to arrange a Q&A following a midweek matinee. This creates a fantastic opportunity for students to discover more about the production, including finding out about the rehearsal process, how each performer forged a career in the arts and what it's like to be performing in a professional production.

We have also managed to arrange some bespoke private Q&A's at the request of schools. For example, a local school were reading the book *The Girl on the Train* and asked if we could arrange a private Q&A with the cast, in order to find out more about the production. The company agreed to this and 30 students spent 15 minutes with the cast asking them questions about the show.

If a school or college would like to enquire about a possible private Q&A, please contact our Outreach Manager – Creative Learning at jamesc@grandtheatre.co.uk

Please note that a private Q&A may not always be possible.

CAREER TALKS

Members of the Outreach Team are more than happy to visit schools and colleges to deliver talks about all of the jobs and careers available in theatre. Something that surprises many students who often imagine that the only jobs available in theatre are as a performer. Our Outreach Team have also attended schools in order to talk about their own career path into the world of theatre.

We also attend careers fairs and conventions where we can display various props from past productions and can also speak more in depth to students about any particular aspect of working in theatre.

If your school would like to enquire about any of the above, please contact our Outreach Manager – Creative Learning at jamesc@grandtheatre.co.uk





WOLVERHAMPTON
GRAND
THEATRE

A WORLD OF theatre AWAITS!

Aged 16-25? Love theatre?

Sixteen25 is completely free of charge, with all the below benefits*:

- £10 Standby tickets for selected shows
- Saving of 15% off one ticket for most performances at the Grand - including many Friday and Saturday nights!
- Exclusive priority booking period for most productions
- Exclusive Sixteen25 events

For more information or to become a member for free today, call the Box Office on 01902 42 92 12 or scan the QR code!

*Wolverhampton Grand Theatre reserves the right to make alterations to membership content and pricing where necessary.



YOUR *FIRST CALL* TO SHARING A WORLD OF THEATRE TOGETHER

FIRST CALL is the perfect way for you and your child to visit Wolverhampton Grand Theatre together at a specially reduced cost and it's **FREE** to join! You can enjoy the biggest and best shows with each other all year round, from the best West End Musicals and Plays, to Ballet, Panto and much more. If you both love theatre and would like to see more of it together then join **FIRST CALL** today.

FIRST CALL members will get all the below benefits*:

- Special **FIRST CALL** ticket offer for selected shows**
- Priority booking period for many Grand Theatre shows
- Invites to **FIRST CALL** Theatre Tours and events

For more information or to become a member for free today, call the Box Office on 01902 42 92 12 or scan the QR code below.

*Wolverhampton Grand Theatre reserves the right to make alterations to membership content and pricing where necessary. **The **FIRST CALL** ticket offer will include two tickets, one child ticket for the member and one adult ticket for the parent/carer.



**FIRST
CALL**
youth scheme

WOLVERHAMPTON
GRAND
THEATRE





WOLVERHAMPTON
GRAND
THEATRE

STAGES SUMMER SCHOOL

Prepare for an exciting summer filled with artistic exploration and skill-building! This August, Wolverhampton Grand Theatre and Arena Theatre are thrilled to bring back the highly anticipated **STAGES SUMMER SCHOOL**, as well as the newly announced **PLAY IN A WEEK** workshop, offering young enthusiasts the chance to immerse themselves in the world of theatre.

After the resounding success of last year, **STAGES SUMMER SCHOOL** will run from 5 – 17 August and will allow participants aged 8 to 21 the opportunity to work with industry professionals during the two-week workshop. Participants will be led by directors Lucy-Ellen Parker and Tristan Jones-Smith, alongside musical director Rob Murray and choreographer Isobel Burgess and will rehearse songs, scenes, and choreography from much-loved musicals. The culmination? A thrilling public performance showcasing their hard work and dedication.

New to this year's summer school offering is **PLAY IN A WEEK**. This workshop will offer budding playwrights aged 12 to 18 the opportunity to develop

their writing and performance skills. Led by theatre practitioner Fran Richards from the 5 – 9 August, participants will collaborate to improvise, devise, and script their own play, culminating in a special performance for friends and family.

Our summer schools are not only about performance, but about supporting and encouraging young people. We provide a safe and supportive environment for our students who are actively encouraged to have fun, make new friends, learn new skills, exchange ideas, express themselves, and most importantly, be themselves.

Join us this summer and unlock your potential on stage!

To register your interest in **STAGES SUMMER SCHOOL** musical theatre workshop, contact the Outreach team on **01902 573320** or email **outreach@grandtheatre.co.uk**

To register your interest for **PLAY IN A WEEK** workshop, contact Sam Fleming on **01902 322646** or email **sam.fleming@wlv.ac.uk**



ALSO Booking



TUE 25 - SAT 29 JUN '24
THE MOUSETRAP



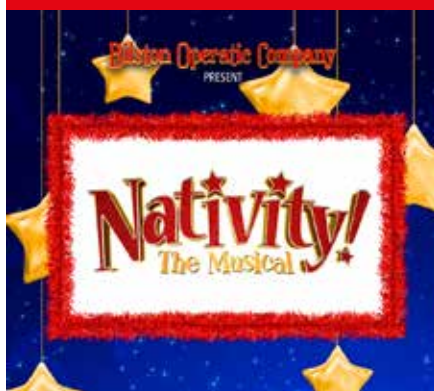
MON 23 - SAT 28 SEP '24
AN OFFICER AND A
GENTLEMAN THE MUSICAL



THU 31 OCT - SAT 2 NOV '24
CIRQUE DU MAGIQUE



TUE 5 - SAT 9 NOV '24
COME FROM AWAY



WED 13 - SUN 17 NOV '24
BILSTON OPERATIC COMPANY
PRESENT NATIVITY! THE MUSICAL



TUE 21 - SAT 25 JAN '25
BLOOD BROTHERS



TUE 4 - SAT 8 MAR '25
AN INSPECTOR CALLS



WED 26 - SUN 30 MAR '25
WBOS PRESENT CHARLIE AND
THE CHOCOLATE FACTORY



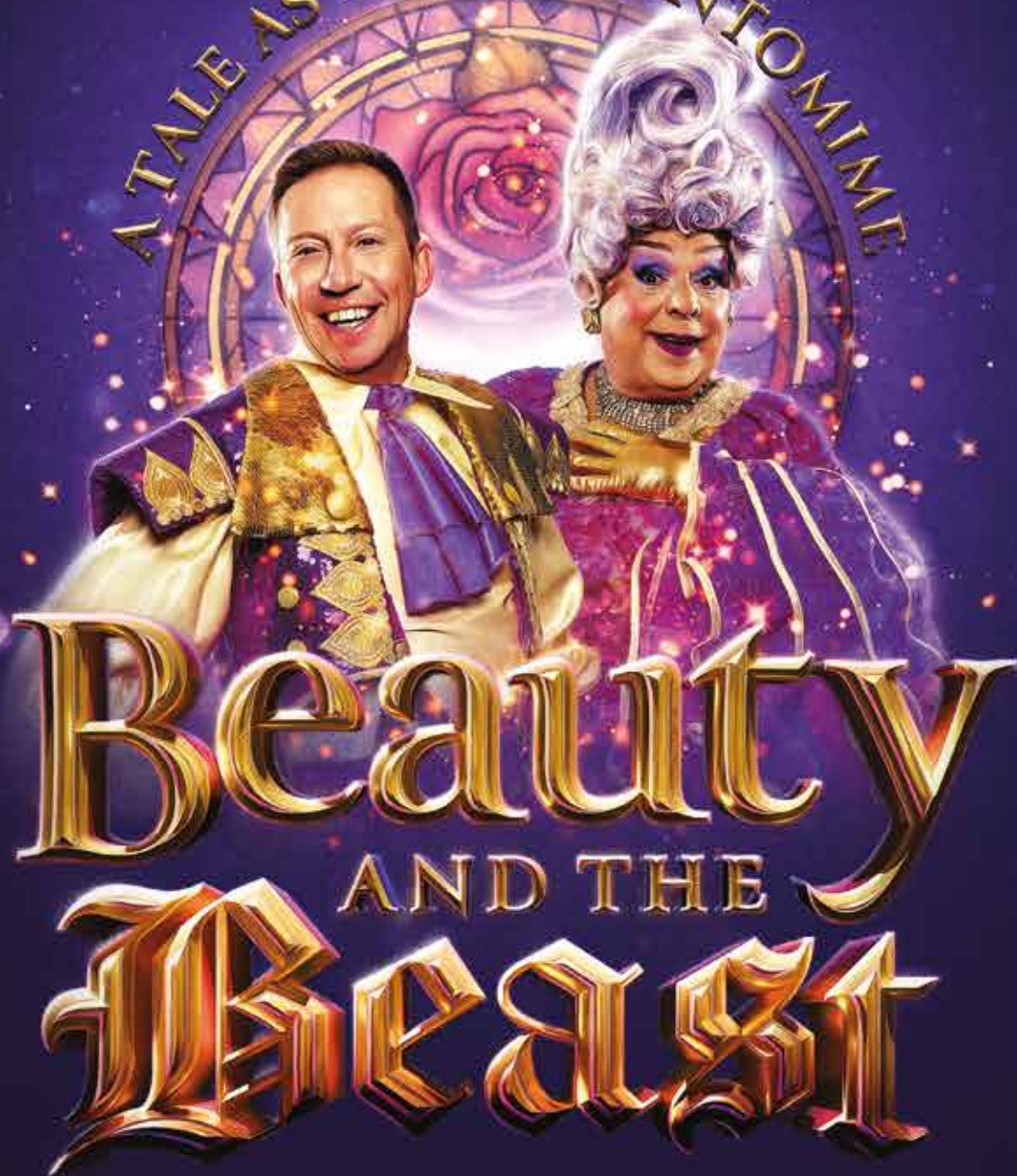
TUE 1 - SAT 5 APR '25
DEAR EVAN HANSEN

WOLVERHAMPTON GRAND THEATRE PRESENTS

TAM RYAN IAN ADAMS

IN

A TALE AS OLD AS PANTOMIME



SAT 30 NOV 2024 – SUN 5 JAN 2025

WOLVERHAMPTON
GRAND
THEATRE

GRANDTHEATRE.CO.UK

#WOLVESGRANDPANTO

